



SERVICE BULLETIN



WORLDLAWN POWER EQUIPMENT, INC.
2415 Ashland Ave
Beatrice, NE 68310
(402) 228-4255

Bulletin Number: SB1202

Date: 6/12/2012

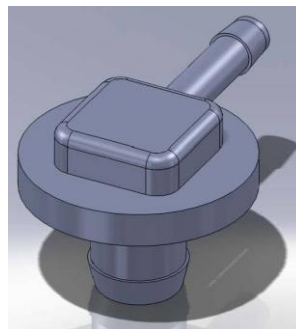
Models: Worldlawn: WYZ48/52/60 Cobra **EPA** Units only.
Encore: Fuzion/X-Treme/Prowler **EPA** Units only.

Subject: EPA vent valve (rollover vent) membrane may become plugged when coming into direct contact with fuel in tank. (Worldlawn and Encore part number 363411.)

Procedure: The following procedure must be followed to lessen the chance of possible damage to EPA tank assemblies because of vent failure.

- Remove hose from vent barb.
- Either remove vent from tank or perform the following with vent in place.
- Bend a small angle (approx. 1/4"-3/8") on end of .035 welding wire or similar (large paper clip).
- Insert wire into barb end of vent valve until you feel the wire poke through the vent membrane. (Do this three times per vent.) This will provide adequate ventilation.
- Reinstall venting assembly.

Note: Please perform the above vent repair procedure on all vent valves (363411) which you may have in stock. All Worldlawn inventory has been adjusted. Please keep in mind that this procedure is not in any way a violation of EPA System Requirements.



Part Number 363411
Vent Valve