

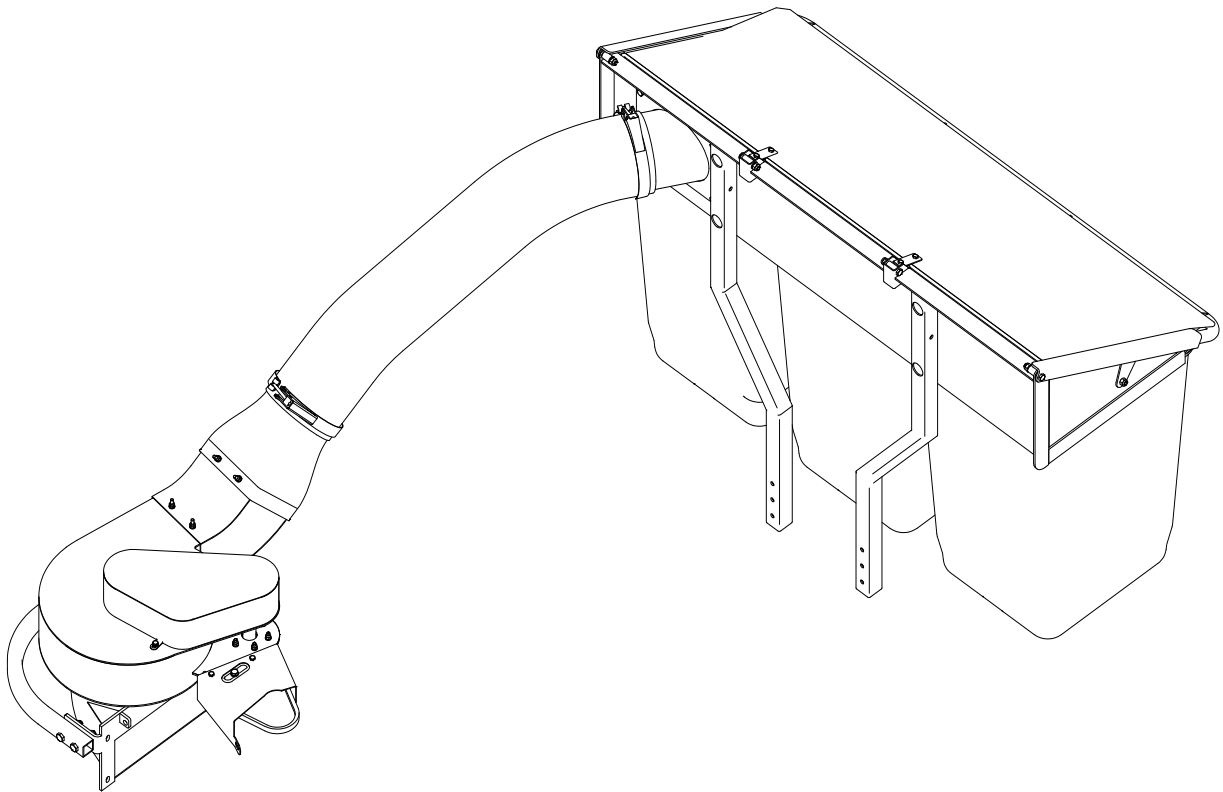
Operator's Manual



WORLDLAWN®

WYZ48/52/60CS

BAGGER



Worldlawn Power Equipment, Inc.

Industrial Park 2415 Ashland Ave. Beatrice, NE 68310

Toll Free Number: 1-800-267-4255

OPERATOR'S MANUAL

This catcher manual is for **WYZ48/WYZ52/WYZ60** lawn mowers. Before operating the catcher assembly, read this manual in its entirety carefully.

Keep this catcher Owner's Manual when lent or transferred.

If this Operator's Manual becomes lost, damaged, or illegible, replace it immediately. Replacements may be ordered through our sales department or our dealers. If additional information is needed, contact our sales department or a dealer. Always give the model number and serial number for the mower and the bagger.

To improve the quality, performance, and security of our products, we may make changes to our products. Sorry for any inconvenience if you find the products in hand a bit different from the manual.

WARNING

POTENTIAL HAZARD

- This product is a piece of power equipment.

WHAT CAN HAPPEN

- Failure to follow safe operating practices can result in serious operator injury or even death.

HOW TO AVOID THE HAZARD

- Keep all shields, guards, and safety devices (especially the grass discharge system) in place and in proper working condition.
- Stop machine and wait for all moving parts to stop, remove spark plug wires or remove key before adjusting, servicing, or performing maintenance.
- If mower deck becomes clogged, stop machine and wait for all moving parts to stop. Remove spark plug wire or remove key before cleaning blockage.
- Keep hands, feet, and clothing away from power driven parts.
- Keep others off of mower.



Table of Contents

1.	Safety	1
	1.1 Safety Information	1
	1.2 Safety Alert Symbol	1
2.	Safety and Instructional Decals	1
3.	Installation	2
	3.1 Unpacking	2
	3.2 Installing Drive Pulley	2
	3.3 Installing Blower Assembly	3
	3.4 Blower Discharge Transition Tube Assembly	3
	3.5 Installing Bag Assembly	3
	3.6 Installing Grass Bag	4
	3.7 Installing Belt Cover Assembly	4
	3.8 Blower Tube Assembly	5
	3.9 Installing the Weight Frame	5
4.	Operation	5
	4.1 Controls	5
	4.2 Emptying the Grass Bags	5
	4.3 Cleaning Obstructions from the Bag System	6
	4.4 Transporting Machines	6
	4.5 Operating Tips	6
5.	Maintenance and Adjustment	7



Table of Contents


5.1 Recommended Maintenance Schedule	7
5.2 Bag Deflector Plate Adjustment	8
6. Storage.....	8
7. Trouble shooting	9
8. Parts Catalog	10
8.1 Catcher	10
8.2 Blower Assembly	12
8.3 Grass Catcher Assembly.....	14
8.4 Grass Bag Assembly.....	16
8.5 Hood Assembly.....	17

1. Safety

1.1 The following list contains safety information specific to WORL DLAWN products and other safety information you must know.


- a) Regard the mower as a piece of power equipment. The operator needs to be trained before operating this unit.
- b) Read the instructions carefully. Be thoroughly familiar with controls, safety decals, and the proper use of the equipment.
- c) Never allow children, teenagers, or adults to operate the equipment without proper instruction.
- d) Keep everyone, especially children and pets, away from the area of operation. Remember that the operator or user is responsible for accidents or hazards occurring to other people or their property.
- e) Do not use a grass catcher on steep slopes. A heavy grass catcher could cause loss of control or overturn the machine.
- f) Keep all movement on slopes slow and gradual. Do not make sudden changes in speed, directions, or turning.
- g) The grass catcher can obstruct the view to the rear. Use extra care when operating in reverse.
- h) Keep hands and feet away from moving parts. Do not make adjustments with the engine running.
- i) Do not leave grass in grass catcher for extended periods of time.
- j) Grass catcher components are subject to wear, damage, and deterioration, which could expose moving parts or allow objects to be thrown. Frequently check components and replace with manufacturer's recommended parts, when necessary.
- k) Stop the engine before removing the grass catcher or unclogging the chute.

1.2 SAFETY ALERT SYMBOL


This **SAFETY ALERT SYMBOL**  is used both in this manual and on the machine to identify important safety messages which must be followed to avoid accidents. This symbol means:

ATTENTION! BECOME ALERT! YOUR SAFETY IS INVOLVED!


The safety alert symbol above alerts you to unsafe actions or situations by the word **DANGER**, **WARNING**, or **CAUTION**.

 **DANGER** : White letters on red background.

Failure to observe the safety instructions could result in death or serious injury.

 **WARNING** : Black letters on orange background.

Failure to observe the safety instructions could result in death or serious injury.

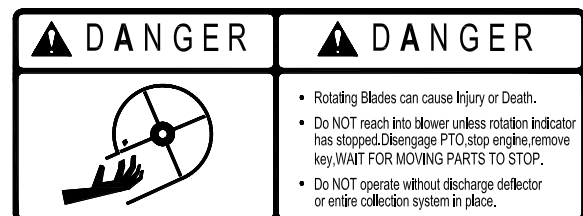
 **CAUTION** : Black letters on yellow background.

Failure to observe the safety instructions may result in slight or serious injury.

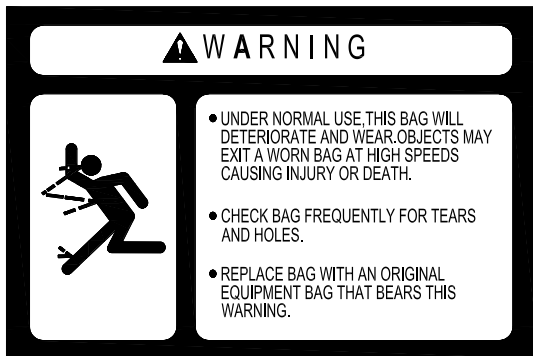
2. Safety and Instructional Decals



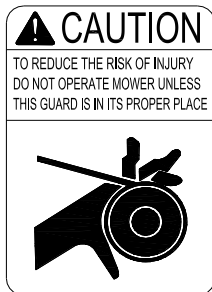
8350



8351



8352



8045



8304

3. Installation

Note: The part numbers in the following assembly procedures are consistent with those in the parts catalog in Section 8.

3.1 Unpacking

- Open crate.
- Remove loose parts (i.e., Operator's manual, etc) from crate.
- Remove unit from crate, check crate thoroughly for loose parts.

3.2 Installing Drive Pulley

- a) Remove the side discharge chute, bushing, and belt cover from the mower deck (FIG 1).

Note: Keep these parts in a bag for later use.

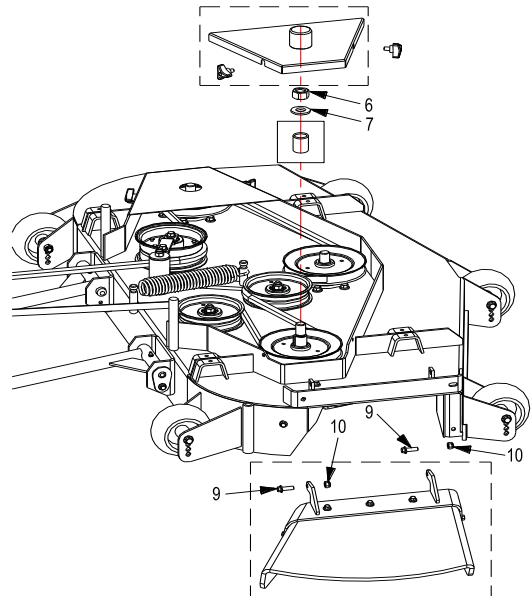


FIG 1

- b) Install Drive Pulley (FIG 2)

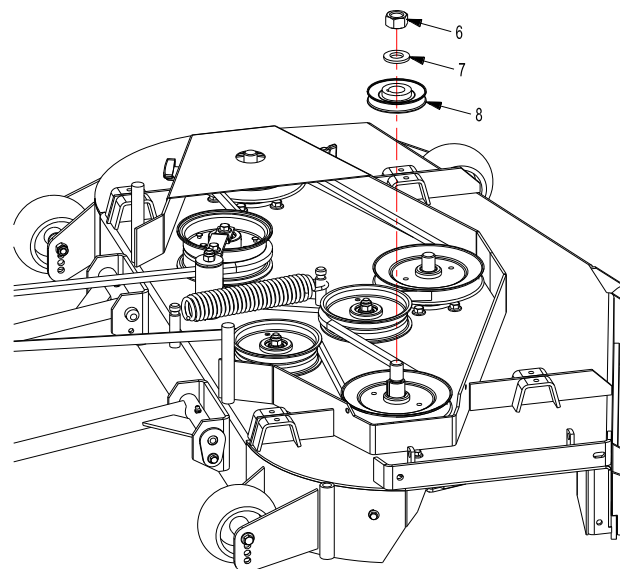


FIG 2

Note: Part no. 6 and 7 are included with the ZTR mower deck. Tighten the nut (ref.no.6) with torque of 115-120ft-lb (156-163N-m).



WORLDLAWN®

3.3 Installing Blower Assembly

a) Lower blower assembly pin into tube as shown. (FIG 3)

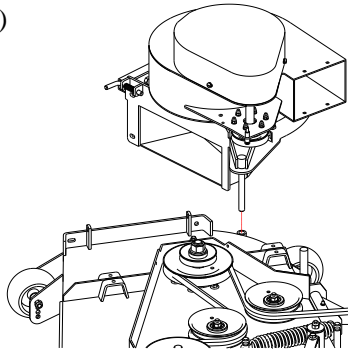


FIG 3

b) Rotate blower toward deck discharge opening. Pull spring-loaded pin and insert into discharge chute tab. (FIG 4)

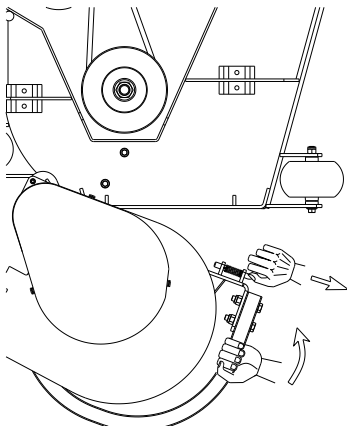


FIG 4

c) Place washers and bearing as shown onto quick release clamp; thread into threaded insert and lock into place. (FIG 5)

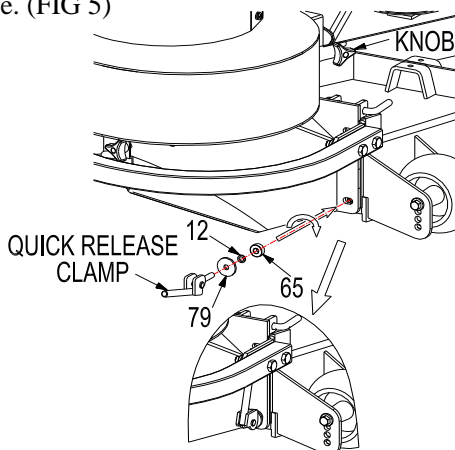


FIG 5

d) Install drive arm assembly and blower drive belt. (FIG 6)

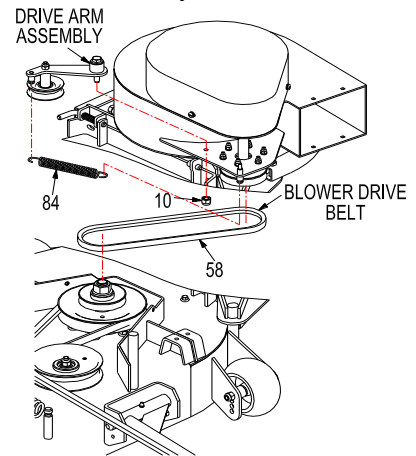


FIG 6

3.4 Blower Discharge Transition Tube Assembly (FIG 7)

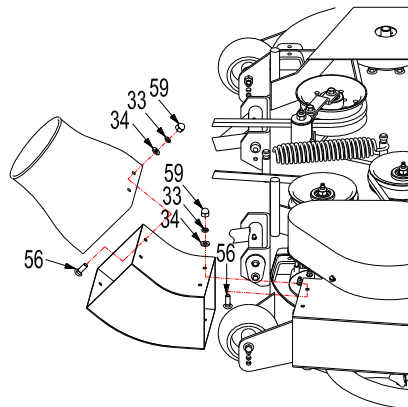


FIG 7

3.5 Installing Bag Assembly

a) Attach the left and right hood frame suspension tubes to hood frame assembly. (FIG 8)

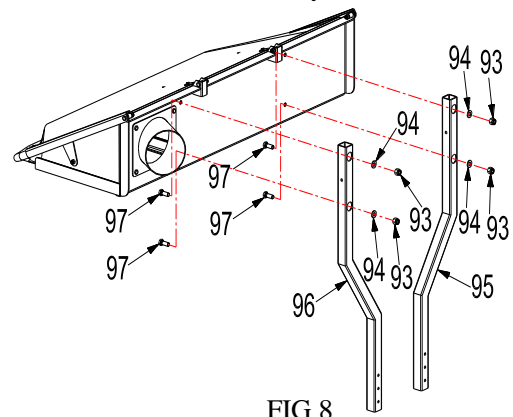


FIG 8

b) Attach hood frame assembly to mower rear main frame as shown. (FIG 9)

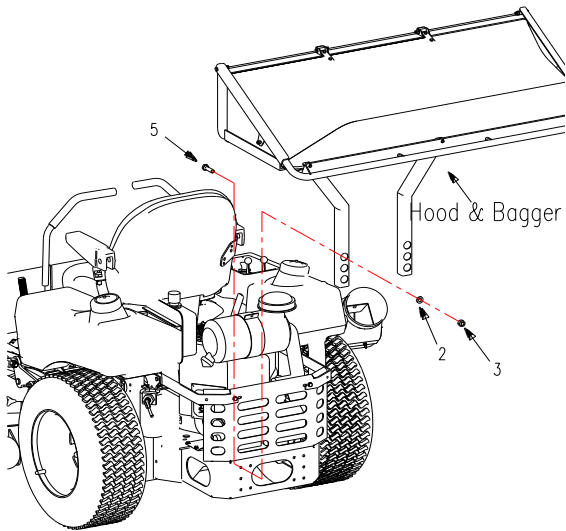


FIG 9

c) Attach frame support angles to hood frame assembly. (FIG10)

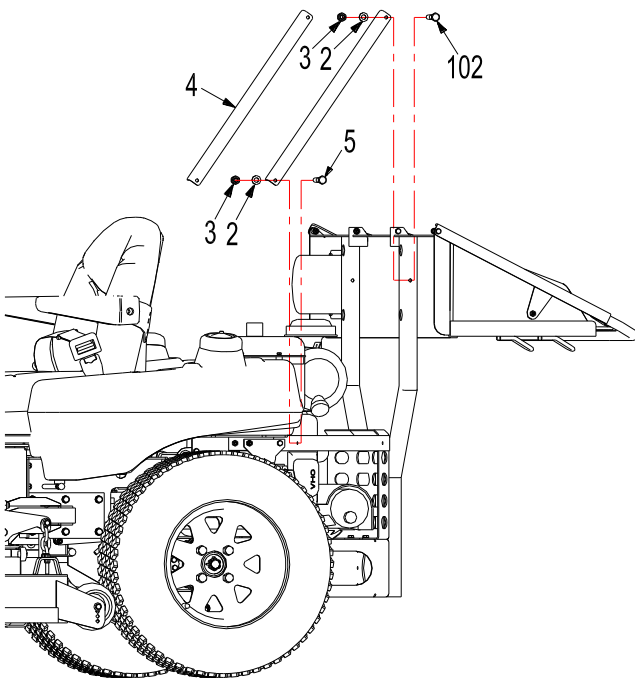


FIG 10

3.6 Installing Grass Bag (FIG 11)

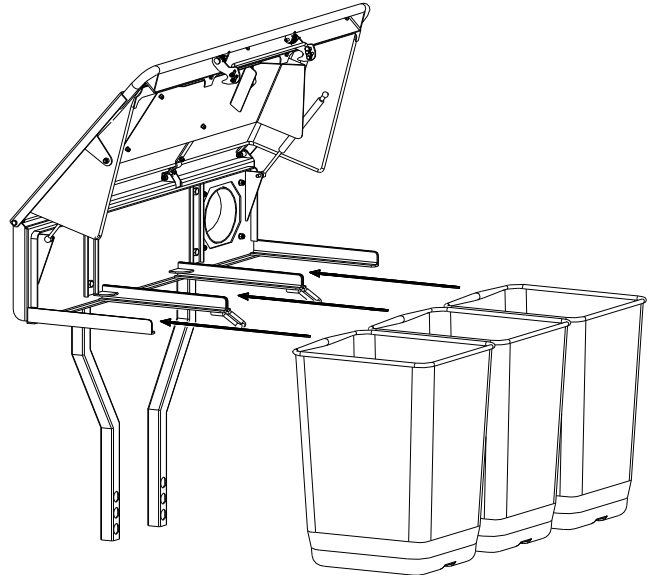


FIG 11

3.7 Installing Belt Cover Assembly (FIG 12)

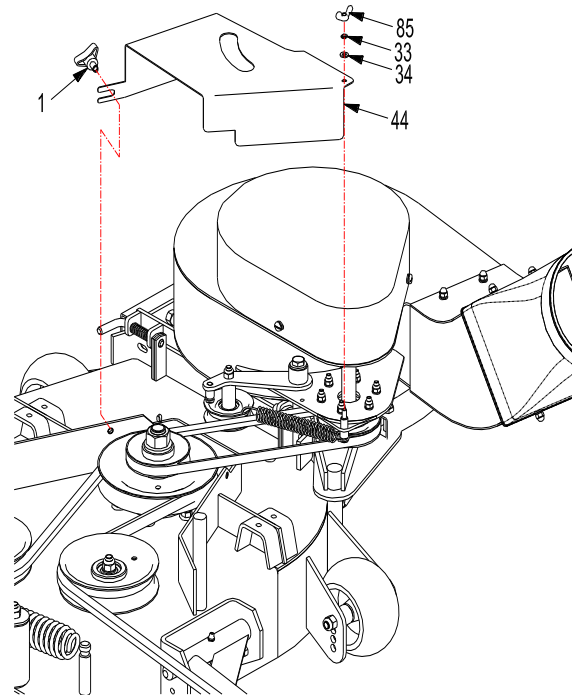


FIG 12

Note: Part No. 1 (3 arm knob) is included with the ZTR mower deck.

3.8 Blower Tube Assembly (FIG 13)

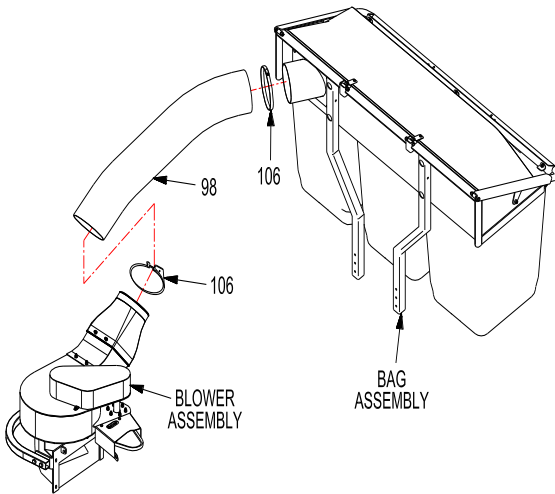


FIG 13

3.9 Installing the Weight Frame (FIG 14)

Note: The number of weights can be adjusted as needed to offset weight of grass in bags.

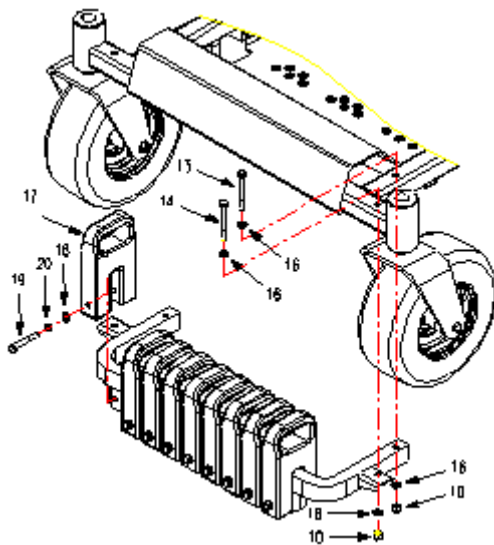


FIG 14

4. Operation

4.1 Controls

- 1) Familiarize yourself with all controls before operating the mower.
- 2) Keep a safe working area.
- 3) Always remove the ignition key and set the

parking brake when leaving the machine unattended, even if just for a few minutes.

- 4) Children or bystanders may be injured if they move or attempt to operate the mower when it is unattended.

WARNING

POTENTIAL HAZARD

- Being unaware of safe working area while operating.
- Haven't shut off engine and set the parking brake and left mower unattended.
- Children or bystanders attempt to operate the mower.

WHAT CAN HAPPEN

- Bystanders may be injured while moving forward, backward, or turning around.
- Children or bystanders may be injured if they move or attempt to operate the mower while it is unattended.

HOW TO AVOID THE HAZARD

- Keep a safe working area.
- Always remove the ignition key and set the parking brake when leaving the machine unattended, even if just for a few minutes.
- Children or bystanders are not allowed to operate it.

4.2 Emptying the Grass Bags

Grass bags are heavy when full. Be careful when lifting or handling a grass bag that is full.

- 1) Disengage the PTO, set the parking brake, and choke or block the tires if on a slope.
- 2) Unlatch the bag frame and open the bag hood.
- 3) Compress the debris into the bags. With both hands, lift up on the bag and unhook it from the bag bracket.
- 4) Grasp the handle on the bottom of the bag and tip it over to empty the bag.
- 5) Clean off the grass from the bracket, especially the notch in the bracket.
- 6) Push the bag forward into position.

⚠ WARNING

POTENTIAL HAZARD

- Opening the hood when the engine is running.
- Dumping grass on a slope.
- Lifting full, heavy grass bag.
- Haven't cleaned the grass out of the notch in the bag bracket.

WHAT CAN HAPPEN

- When the hood is opened while the engine is running, debris can injure you, for example, eye injury.
- Even if the parking brake is set, you may lose control and slip on a slope.
- You may become injured when lifting a full bag.
- The bag is not in proper position and the hood cannot be latched.

HOW TO AVOID THE HAZARD

- Turn off the engine and wait for all moving parts to stop before leaving the operating position.
- Use a piece of wood or similar object to block the wheel on a slope.
- Lift the bag using both hands.
- Clean off the grass from the bracket, especially the notch in the bag bracket.

4.3 Cleaning Obstructions from the Bagging System

- 1) Disengage the PTO and set the parking brake.
- 2) Turn off the engine, remove the key, and wait for all moving parts to stop.
- 3) Empty the bags.
- 4) Unlatch the lower clamp of grass tube.
- 5) Using a stick or similar object, not your hands, remove and clear any obstructions from the grass tube assembly.
- 6) Raise the rear of the unit and support it with jack stands or equivalent support to the transportation position.

⚠ CAUTION

POTENTIAL HAZARD

- Raising the rear of the unit relying solely on jacks could be dangerous.

WHAT CAN HAPPEN

- The jacks may not be enough support or may malfunction allowing the unit to fall, which could cause injury.

HOW TO AVOID THE HAZARD

- DO NOT rely solely on the jacks for support. Use adequate jack stands or equivalent support.

- 7) Using a stick or similar object, not your hands, remove and clear any obstructions from the blower assembly and under the deck.
- 8) After you have removed the obstruction, install the complete bag system and resume operation.

4.4 Transporting Machines

Do not leave grass or debris in the bag while transporting the machine.

⚠ WARNING

POTENTIAL HAZARD

- Leaving grass or debris in the bag while transporting the machine.

WHAT CAN HAPPEN

- Transporting the machine with grass or debris in the bag can damage the machine.

HOW TO AVOID THE HAZARD

- Do not leave grass or debris in the bag while transporting the machine.

4.5 Operating Tips

- 1) Remember that the machine is longer and wider with this attachment installed. By turning too sharply in confined places you can damage the attachment or other property.
- 2) Always trim with the left side of the mower.
- 3) Cut the grass often, especially when it grows rapidly. For best cutting appearance, be sure to slightly overlap the mower into the previously cut area. This helps reduce the load on the engine and reduces the chance of plugging the blower assembly and tubes.

⚠ CAUTION

POTENTIAL HAZARD

· Cutting the grass too high and moving forward too fast.

WHAT CAN HAPPEN

· The blower assembly can become plugged.

HOW TO AVOID THE HAZARD

· When the grass is too long, be sure to cut it several times and move slowly.

- 4) If the grass is ever allowed to grow longer than normal, or if it contains a high degree of moisture, raise to a higher cutting height than usual and cut and bag the grass at this setting. Then cut and bag the grass again using the lower normal setting. Excessively long grass is heavy and may not be propelled completely into the bag.
- 5) If possible, always try to cut grass when it is dry. Wet grass can cause plugging.
- 6) To avoid plugging the bagging system, reduce ground speed and mow the grass at a higher cutting height, then lower the mower to your normal cutting height and repeat the bagging process.
- 7) While bagging, small amounts of grass clippings normally blow out of the front of the mower. An excessive amount of clipping blow-out indicates that the bag is full and the grass tube is plugged.
- 8) Always lift the deck to the highest position when loading the machine on trailer or ascending/descending a curb.

5. Maintenance & Adjustment

⚠ WARNING

POTENTIAL HAZARD

· Engine is started when making an adjustment.

WHAT CAN HAPPEN

· Serious injury or death may occur.

HOW TO AVOID THE HAZARD

· Before adjusting, remove the key.

⚠ WARNING

POTENTIAL HAZARD

· Engine is overheating.

WHAT CAN HAPPEN

· Severe burns can occur on contact.

HOW TO AVOID THE HAZARD

Allow engine parts, especially the muffler, to cool before touching.

5.1 Recommended Maintenance Schedule

Maintenance Service Interval	Maintenance Schedule
After the first 6 operating hours	● Inspect the belt
Before each use or daily	● Clean the blower assembly ● Clean the bagger system ● Clean the bags
Every 25 hours	● Inspect the belt

5.1.1 Cleaning the bagger attachment

Maintenance interval: Daily

Turn off the engine, remove the key, and wait for all moving parts to stop.

- 1) Raise the front of the unit and support it with jack stands or equivalent support to the transportation position.

⚠ CAUTION

POTENTIAL HAZARD

· Raising the front of the unit relying solely on jacks could be dangerous.

WHAT CAN HAPPEN

· The jacks may not be enough support or may malfunction allowing the unit to fall, which could cause injury.

HOW TO AVOID THE HAZARD

DO NOT rely solely on the jacks for support. Use adequate jack stands or equivalent support.

- 2) Clean the debris from underneath the mower and in the blower assembly.
- 3) Wash the inside and outside of the bag hood, bags, tube, and the underside of the mower.
- 4) After washing all of the parts, let them dry thoroughly and reinstall.
- 5) With all parts installed, start and run the machine for a minute to assist in drying.
- 3) Disengage the PTO, move the motion control levers to the neutral lock position, and set the parking brake.
- 4) Stop the engine, remove the key, and wait for all moving parts to stop before leaving the operating position.
- 5) Open the catcher hood and check the level of debris in each of the three bags.

5.1.2 Replacing the belt

- 1) Disengage the PTO, move the motion control levers to the neutral lock position, and set the parking brake.
- 2) Stop the engine, remove the key, and wait for all moving parts to stop before leaving the operating position.
- 3) Remove the two belt covers and remove the tension spring.
- 4) Replace the old belts with new ones.
- 5) Install the tension spring and belt cover.

5.1.3 Replacing the bag

- 1) Disengage PTO, move motion control levers to neutral lock position, and set parking brake.
- 2) Stop the engine, remove the key, and wait for all moving parts to stop before leaving the operating position.
- 3) Unlatch the bag frame.
- 4) Slide the bag out from the bag frame locking position.
- 5) Replace the new bag.

- 6) Adjust the deflector plate position according to the debris level in the bags.
- 7) Repeat procedures 2-6 until the debris level in the three bags is approximately equal.

Note: It is not possible for the amount of debris in all three bags to be 100% equal; however, care should be taken to achieve equal levels as close as possible for proper weight distribution.

6. Storage

- a) Clean the bagger attachment. Refer to 5.1.1.
- b) Inspect the bag attachment for damage.
- c) Make sure the bags are empty and thoroughly dry.
- d) Store the machine in a clean, dry place, out of direct sunlight. If you must store the machine outside, cover it with a weatherproof cover. This protects the plastic parts and extends the life of the machine.

5.2 Bag Deflector Plate Adjustment

Deflector plate can be adjusted to fill the three bags more equally during operation.

- 1) Empty the three bags.
- 2) Operate the mower for approximately 3 minutes.

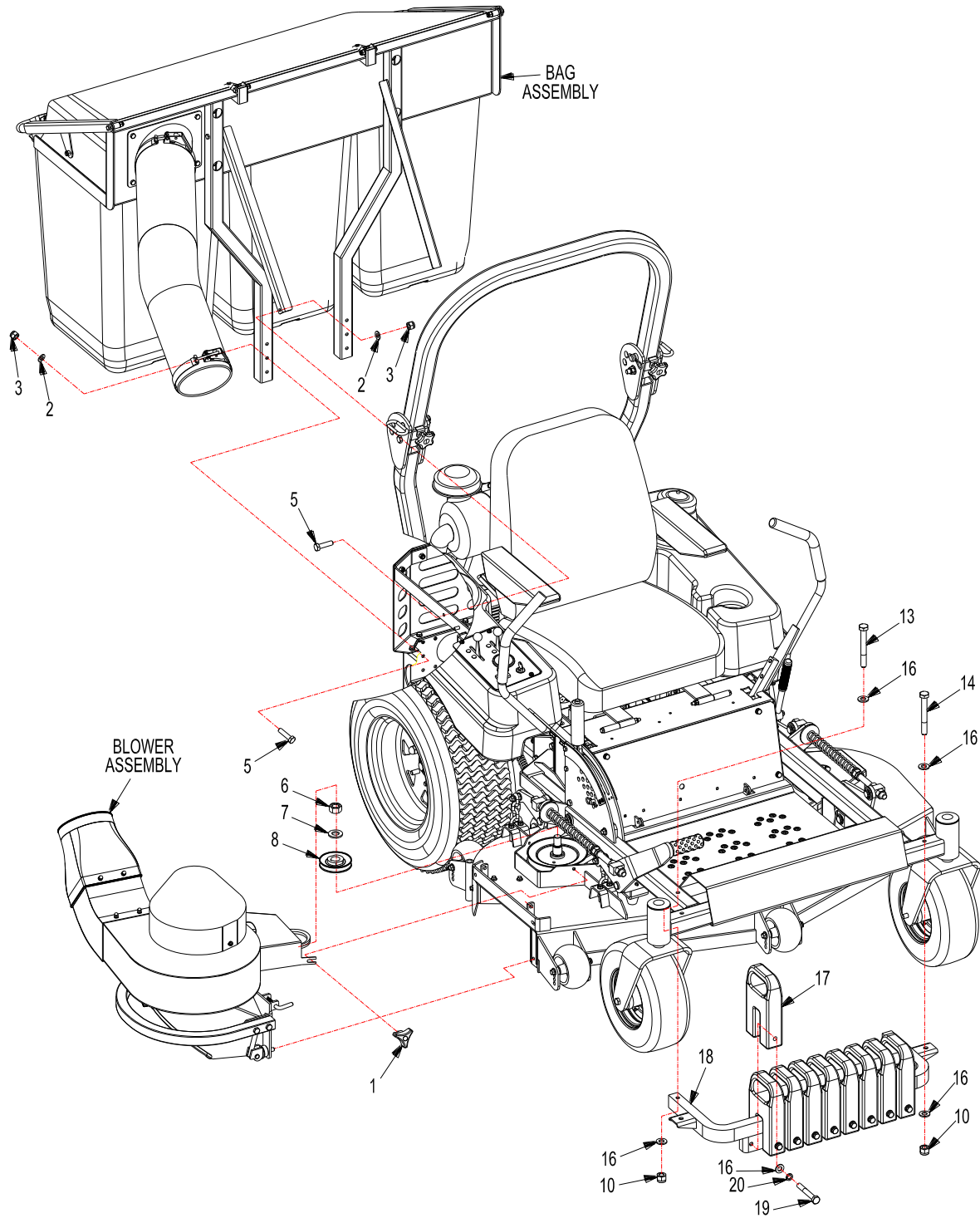


7. Trouble shooting

Problem	Possible Cause	Corrective Action
Abnormal Vibration	<ul style="list-style-type: none"> ● Cutting blades are bent or unbalanced ● Loose blower pulley or pulley assembly 	<ul style="list-style-type: none"> ● Install new cutting blade ● Tighten the pulley
Reduced bagging performance	<ul style="list-style-type: none"> ● Low engine speed ● Plugged screen in bag hood ● Loose bag belt ● Full bags 	<ul style="list-style-type: none"> ● Always operate bagger at full throttle ● Remove debris, leaves, or grass clippings from the screen ● Replace the bag belt ● Empty the grass bags
Blower and tubes plugging too frequently	<ul style="list-style-type: none"> ● Bags are too full ● Low engine speed ● Grass is too wet ● Grass is too long ● Ground speed is too fast ● Worn bag belt ● Loose bag belt 	<ul style="list-style-type: none"> ● Dump more frequently ● Always operate bagger at full throttle ● Cut grass when it is dry ● Cut the grass several times ● Drive slower at full throttle ● Replace belt ● Adjust the pulley and tighten belts
Debris blowout	<ul style="list-style-type: none"> ● Bags are too full ● Plug in the bag system ● Ground speed is too fast 	<ul style="list-style-type: none"> ● Dump more frequently ● Clean the bagger system ● Drive more slowly at full throttle
Impeller doesn't rotate freely	<ul style="list-style-type: none"> ● Plug in the blower system ● Worn impeller 	<ul style="list-style-type: none"> ● Clean the blower system ● Contact dealer to replace

8. Parts Catalog

8.1 Grass Catcher

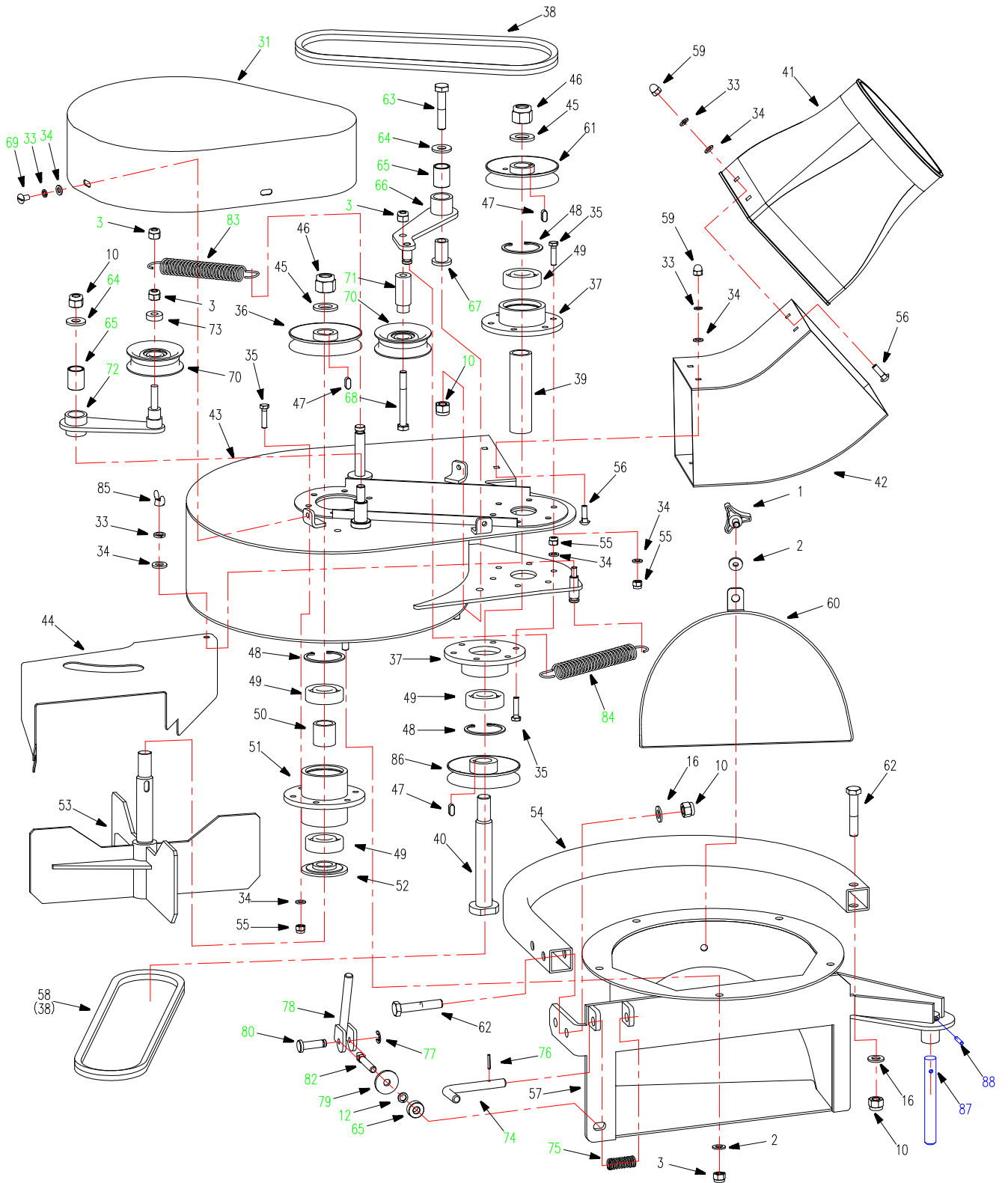


REF.	PART NO.	DESCRIPTION	48	52	60
1	3302190	3 Arm Knob	×	×	×
2	B97.1-8	Flat Washer M8	×	×	×
3	B6182-8	Locknut M8	×	×	×
5	B5783-820	Hex Hd Bolt M8×20	×	×	×
6	B6171-20	Nut M20×1.5	×	×	×
7	5201048	Washer	×	×	×
8	5210090	Blower Drive Pulley	×	×	
	6010090	Blower Drive Pulley			×
9	B5787-1025	Hex Hd Bolt M10×25	×	×	×
10	B6182-10	Locknut M10	×	×	×
11	B5787-825	Hex Hd Bolt M8×25	×	×	×
12	B93-8	Split Lock Washer M8	×	×	×
13	B5782-10110	Bolt M10×110	×	×	×
14	B5782-1080	Bolt M10×80	×	×	×
16	B97.1-10	Flat Washer M10	×	×	×
17	5200025	Weights	×	×	×
18	5200021	Weight Frame Weldment	×	×	×
19	B5782-1070	Hex Hd Bolt M10×70	×	×	×

Note: REF. NO. 1, 6, 7 are included with the mower deck.



8.2 Blower Assembly



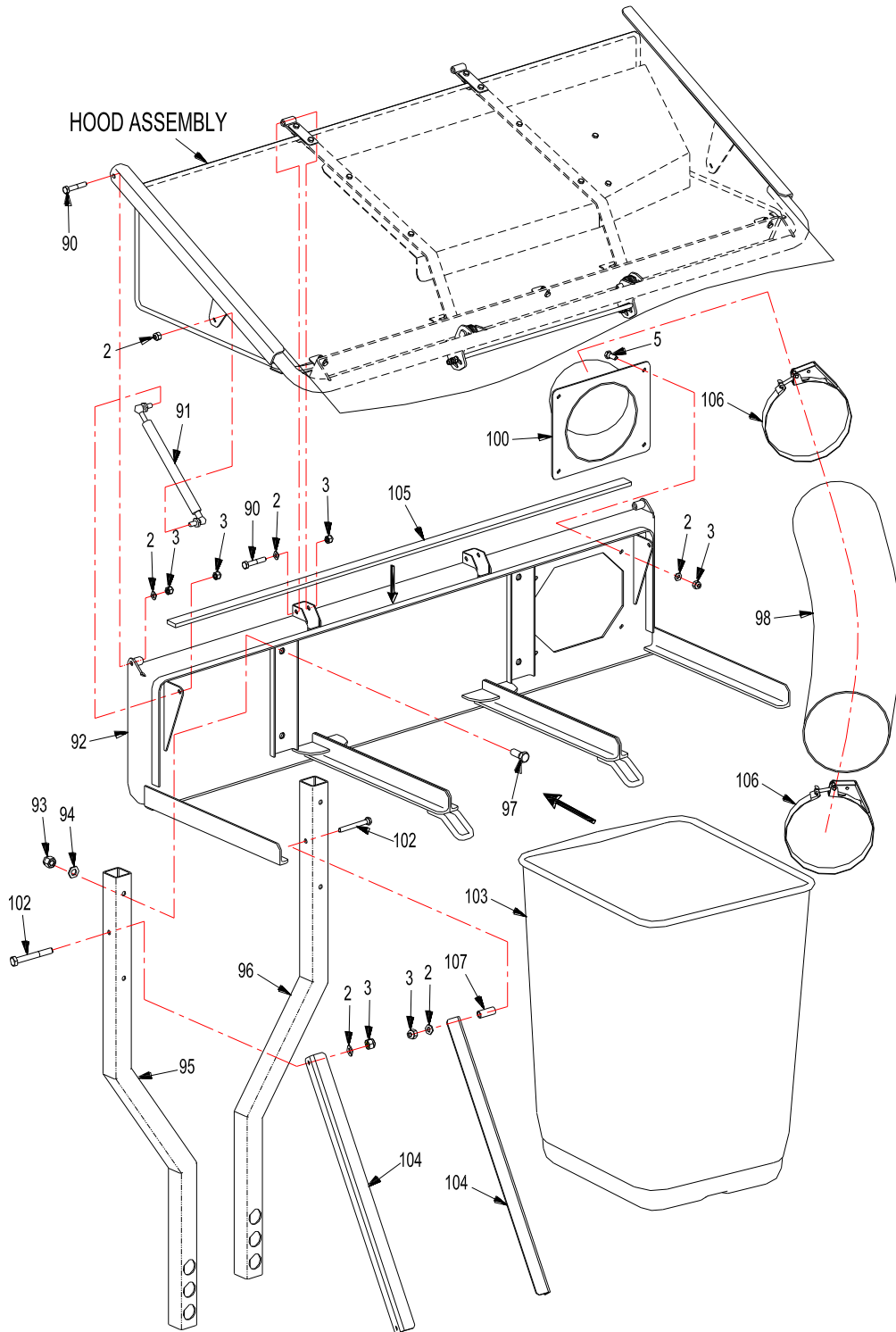


WORLDLAWN®

REF.	PART NO.	DESCRIPTION	48	52	60
1	3302190	3 Arm Knob	×	×	×
2	B97.1-8	Flat Washer M8	×	×	×
3	B6182-8	Locknut M8	×	×	×
10	B6182-10	Locknut M10	×	×	×
12	B93-8	Split Lock Washer M8	×	×	×
16	B97.1-10	Flat Washer M10	×	×	×
31	5210470	Belt Cover Weldment	×	×	
	6010470	Belt Cover Weldment			×
32	B5783-616	Hex Hd Bolt M6×16	×	×	×
33	B93-6	Split Lock Washer M6	×	×	×
34	B97.1-6	Flat Washer M6	×	×	×
35	B5783-625	Bolt M6×25	×	×	×
36	5210060	Belt Pulley Weldment	×	×	×
	5210480	Belt Pulley			×
37	5210004	Bearing Housing	×	×	×
38	5210409	Drive Belt	×	×	
	6010409	Drive Belt			×
39	5210007	Bearing Spacer Tube	×	×	×
40	5210406	Spindle Shaft	×	×	×
41	5210012	Transition Tube	×	×	×
42	5210080	Deck Discharge Tube	×	×	×
43	4822420	Blower Cover Weldment	×		
	5210420	Blower Cover Weldment		×	
	6010420	Blower Cover Weldment			×
44	4822411	Belt Cover	×		
	5210411	Belt Cover		×	
	6010411	Belt Cover			×
45	B97.1-16	Flat Washer M16	×	×	×
46	B6182-16	Nut M16	×	×	×
47	B1096-614	Key 6×14	×	×	×
48	B893.1-47	Snap Ring M47	×	×	×
49	B276-6204RS	Bearing 6204-2RS	×	×	×
50	5210002	Bearing Spacer Tube	×	×	×
51	5210001	Bearing Housing	×	×	×
52	5210003	Dust Cap	×	×	×
53	5210030	Impeller	×	×	×
54	5210460	Security Bar	×	×	×
55	B6182-6	Locknut M6	×	×	×
56	B801-616	Bolt M6×16	×	×	×
57	4822440	Blower Discharge Weldment	×		

REF.	PART NO.	DESCRIPTION	48	52	60
	5210440	Blower Discharge Weldment		×	
	6010440	Blower Discharge Weldment			×
58	4822410	Drive Belt	×		
(38)	6010409	Drive Belt		×	
	6010410	Drive Belt			×
59	B923-6	Nut M6	×	×	×
60	4822045	Bottom Cover Weldment	×		
	5210045	Bottom Cover Weldment		×	
	6010045	Bottom Cover Weldment			×
61	5210065	Belt Pulley Weldment	×	×	
62	B5782-1055	Hex Hd Bolt M10×55	×	×	×
63	B5782-1050	Bolt M10×50	×	×	×
64	3302058	Washer M10	×	×	×
65	B2685-162025	Bearing 16×20×25	×	×	×
66	5210310	Drive Arm Weldment		×	×
	4822310	Drive Arm Weldment	×		
67	5210302	Flanged Bushing	×	×	×
68	B5782-870	Bolt M8×70	×	×	×
69	B67-610	Bolt M6×10	×	×	×
70	5210305	Tension Pulley Assembly	×	×	×
71	5210303	Step Bushing	×	×	×
72	5210330	Tension Arm Weldment	×	×	×
73	5210321	Spacer	×	×	×
74	5210405	Latch Pin	×	×	×
75	5210407	Compression Spring	×	×	×
76	B879-318	Stop Pin 3×18	×	×	×
77	B896-5	Snap Ring M5	×	×	×
78	5210351	Quick Release Handle	×	×	×
79	5210356	Washer	×	×	×
80	2003023	Clevis Pin	×	×	×
81	5210355	Spacer	×	×	×
82	5210354	Quick Release Stud	×	×	×
83	5210417	Tension Spring	×	×	
	6010417	Tension Spring			×
84	5210418	Tension Spring		×	
	6010418	Tension Spring	×		×
85	B62-6	Wing Nut M6	×	×	×
86	5210480	Belt Pulley	×	×	
	5210060	Belt Pulley Weldment			×
87	5210447	Spindle Shaft	×	×	×
88	B879-625	Pin 6*25	×	×	×

8.3 Bagger Assembly





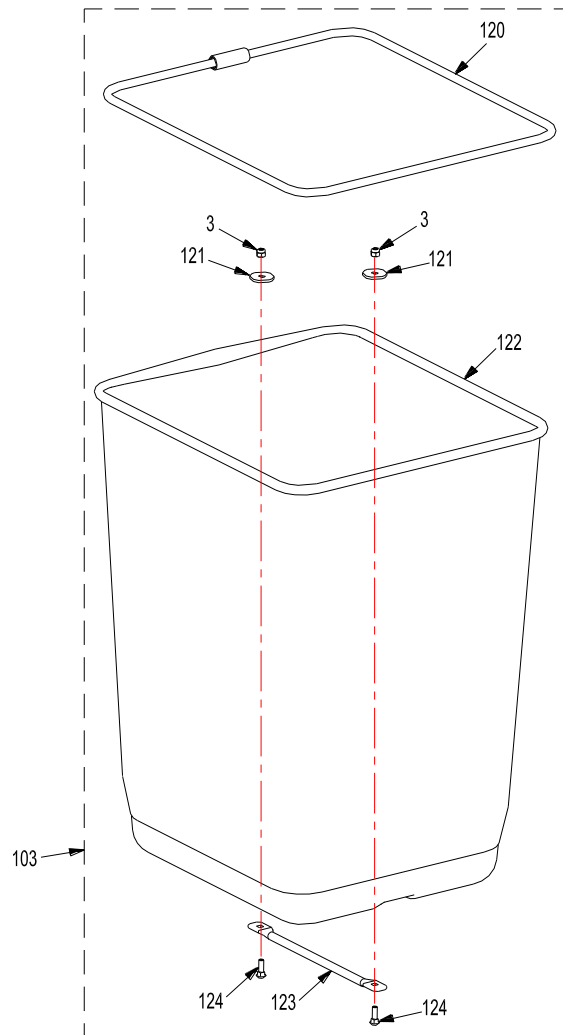
WORLDLAWN®

REF.	PART NO.	DESCRIPTION	48	52	60
2	B97.1-8	Flat Washer M8	×	×	×
3	B6182-8	Locknut M8	×	×	×
5	B5783-820	Hex Hd Bolt M8×20	×	×	×
90	B5782-845	Hex Hd Bolt M8×45	×	×	×
91	5210107	Damper	×	×	×
92	5210110	Hood Frame Assembly	×	×	×
93	B6182-12	Locknut M12	×	×	×
94	B97.1-12	Washer M12	×	×	×
95	5210104	Suspension Tube-LH	×	×	×
96	5210105	Suspension Tube-RH	×	×	×

REF.	PART NO.	DESCRIPTION	48	52	60
97	B5783-1230	Bolt M12×30	×	×	×
98	5210008	Grass Tube φ160	×	×	×
100	5210160	Hood Inlet Adaptor	×	×	×
102	B5782-860	Hex Hd Bolt M8×60	×	×	×
103	5210170	Grass Bag	×	×	×
104	5210108	Frame Support Angle	×	×	×
105	5210109	Seal Strip	×	×	×
106	5210240	Tube Clamp	×	×	×
107	3602014	Spacer		×	×

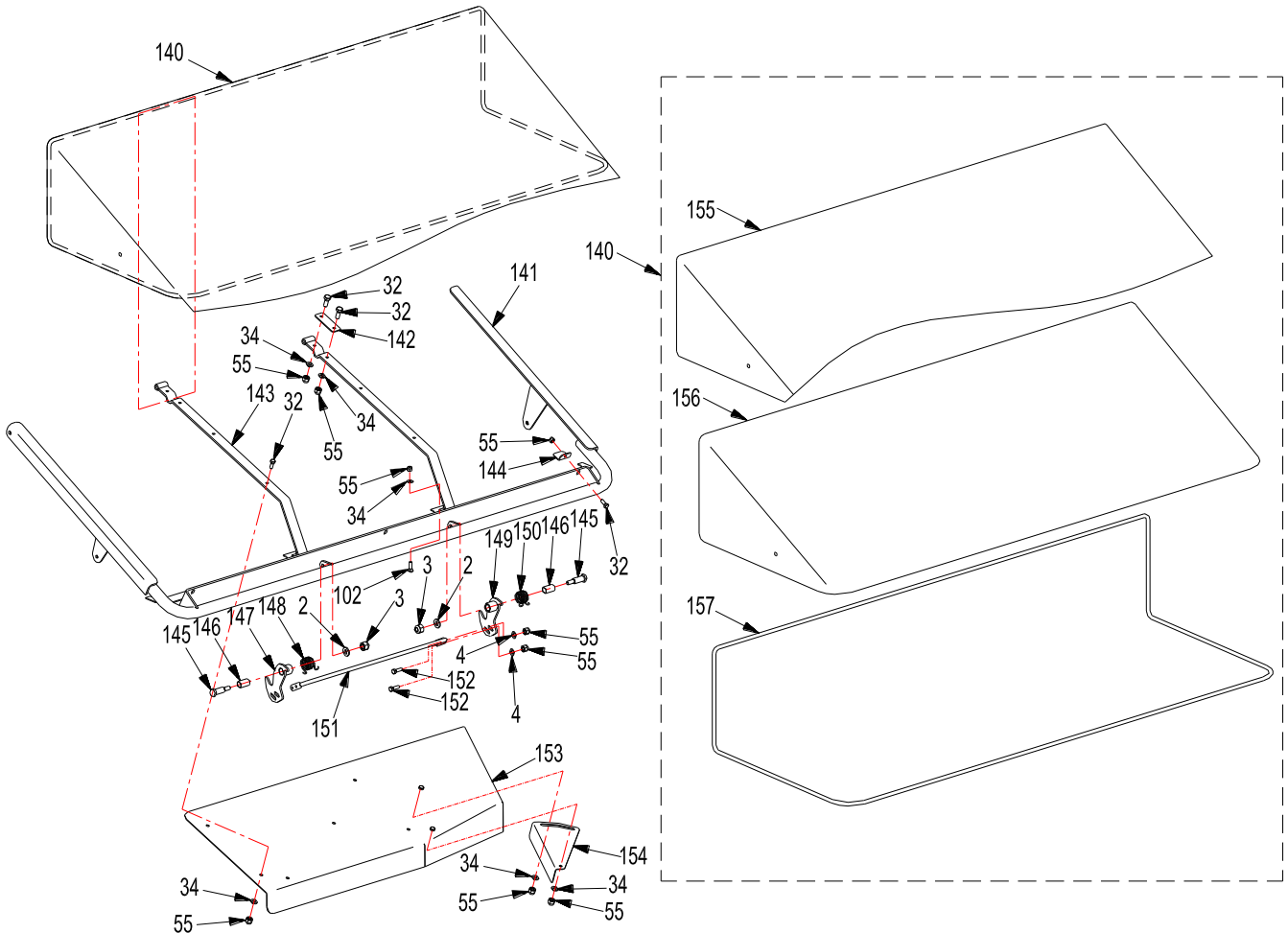
Note : Ref. no. 107 (3602014-spacer) is included for Kawasaki 21HP\23HP\25HP engines.

8.4 Grass Bag Assembly



REF.	PART NO.	DESCRIPTION	48	52	60
3	B6182-8	Locknut M8	×	×	×
103	5210170	Grass Bag Assembly	×	×	×
120	5210174	Bag Frame	×	×	×
121	5210177	Washer	×	×	×
122	5210178	Grass Bag	×	×	×
123	5210176	Handle	×	×	×
124	B12-620	Bolt M6×20	×	×	×

8.5 Hood Assembly



REF	PART NO.	DESCRIPTION	48	52	60
3	B6182-8	Locknut M8	×	×	×
2	B97.1-8	Flat Washer M8	×	×	×
32	B5783-616	Hex Hd Bolt M6×16	×	×	×
34	B97.1-6	Flat Washer M6	×	×	×
55	B6182-6	Locknut M6	×	×	×
140	5210150	Hood Assembly	×	×	×
141	5210130	Hood Frame Assembly	×	×	×
142	5210101	Hinge Plate	×	×	×
143	5210140	Support Strap	×	×	×
144	5210106	Cover Hold-Down Plate	×	×	×
145	2806055	Shoulder Bolt	×	×	×
146	5210188	Spacer	×	×	×

REF	PART NO.	DESCRIPTION	48	52	60
147	5210182	Latch-LH	×	×	×
148	5210184	Torsion Spring-LH	×	×	×
149	5210180	Latch-RH	×	×	×
150	5210183	Torsion Spring-RH	×	×	×
151	5210187	Handle	×	×	×
152	B5783-618	Hex Hd Bolt M6×18	×	×	×
153	5210210	Fixed Deflector Plate	×	×	×
154	5210212	Adjustable Deflector Plate	×	×	×
155	5210154	Dust Cover	×	×	×
156	5210220	Grass Cover	×	×	×
157	5210151	Grass Cover Frame	×	×	×



WORLDLAWN®

Worldlawn Power Equipment, Inc.

Industrial Park 2415 Ashland Ave. Beatrice, NE 68310

Phone: (402)228-4255 Fax: (402)223-4103

www.worldlawnpowerequipment.com