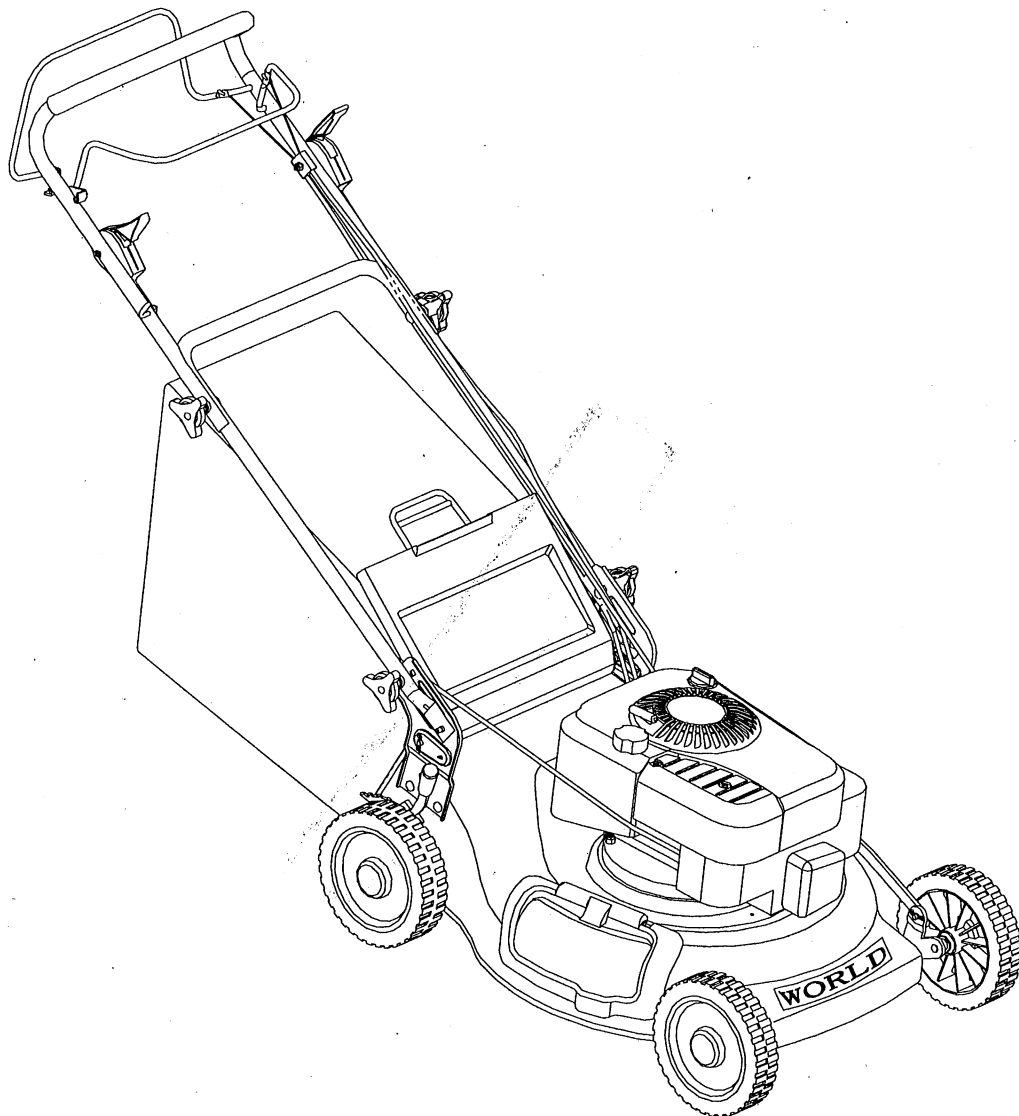


# Parts Catalog



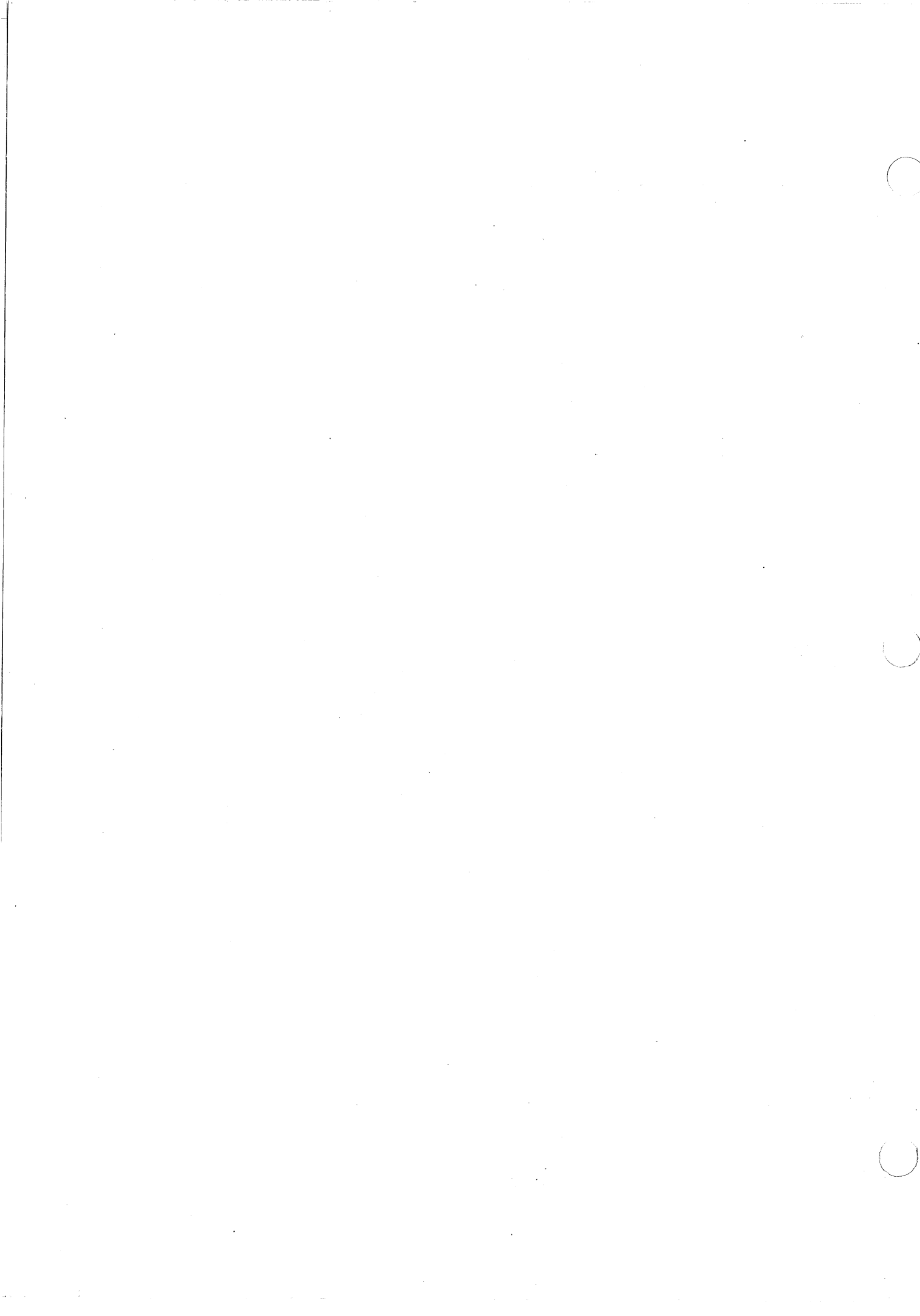
**WORLDLAWN<sup>®</sup>**

**WYZ22 LAWN MOWER**



**JIANGSU WORLD PLANT-PROTECTING MACHINERY CO., LTD.**

**THE PEOPLE'S REPUBLIC OF CHINA**





# TABLE OF CONTENTS

---

SAFETY/OPERATION & PRODUCT DECALS .....	2
MOWER ASSEMBLY .....	3
HANDLEBAR & CONSOLE .....	4
MOWER DECK ASSEMBLY .....	6
DRIVE ASSEMBLY .....	8
STRAIGHT BLADE /SWING BLADE ASSEMBLY .....	10
GRASS BAG ASSEMBLY .....	12
NOTES .....	13



60

	WORLD BRAND LAWN MOWER	
MODEL WY222	RATED SPEED 3200 r/min	
POWER 6.5HP	CUTTING WIDTH 508mm	
MASS 43Kg	DIMENSION 1625x565x988mm	
DATE	NO.	A10000
JIANGSU WORLD PLANT-PROTECTING MACHINERY CO., LTD.		
THE PEOPLE'S REPUBLIC OF CHINA		

61

62



63

**CAUTION**

TO REDUCE THE RISK OF INJURY  
DO NOT OPERATE MOWER UNLESS  
THIS GUARD IS IN ITS PROPER PLACE

64

**WARNING**

AVOID SERIOUS INJURY OR DEATH

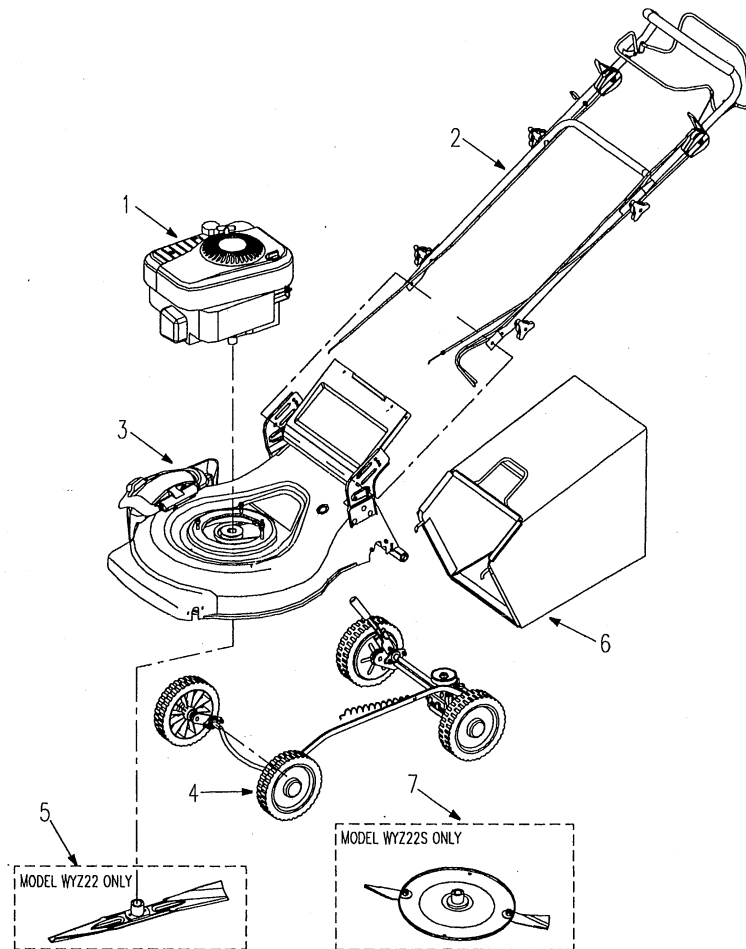
- READ THE OPERATOR'S MANUAL
- GO ACROSS SLOPES, NOT UP AND DOWN.
- DO NOT MOW WHEN CHILDREN OR OTHERS ARE AROUND.
- LOOK DOWN AND BEHIND BEFORE AND WHILE MOVING BACKWARDS.
- REMOVE OBJECTS THAT COULD BE THROWN BY THE BLADE.
- KEEP SAFETY DEVICES (GUARDS, SHIELDS, SWITCHES, ETC.) IN PLACE AND WORKING.

65

**WARNING**

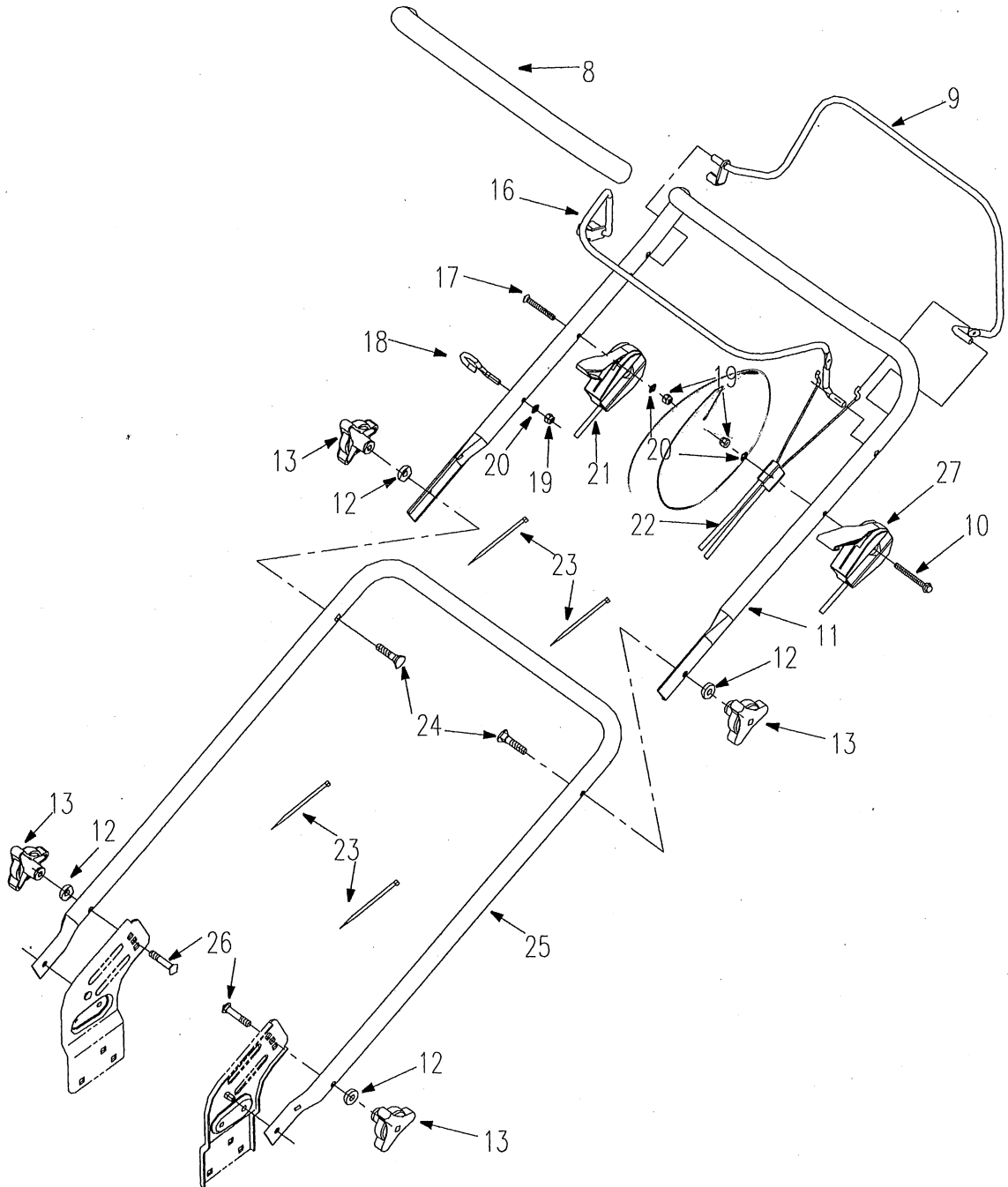
TO PREVENT INJURY.  
Do not operate unless bag or chute  
are installed or guard is in place.

66



REF. NO.	PART NO.	DESCRIPTION	QTY.
1	122602	Engine	1
2	WYZ22-1	Handlebar & Console	1
3	WYZ22-2	Mower Deck Assembly	1
4	WYZ22-3	Drive Assembly	1
5	WYZ22-4	Straight Blade Assembly	1
6	2206000	Grass Bag Assembly	1
7	WYZ22-5	Swing Blade Assembly	1

# HANDLEBAR & CONSOLE



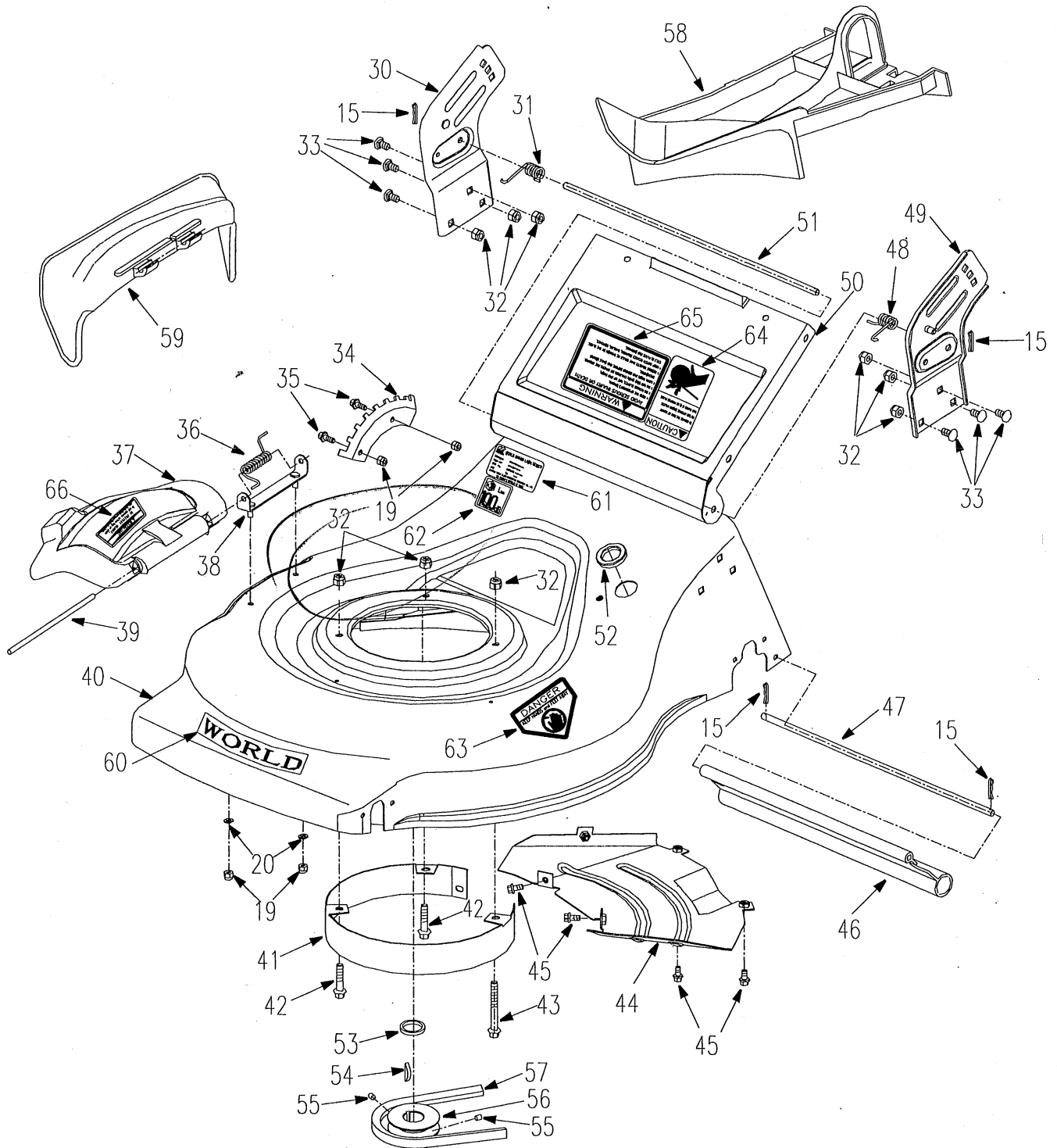


# HANDLEBAR & CONSOLE

REF NO.	PART NO.	DESCRIPTION	QTY.
8	WORD18.6-04	Handle Grip	1
9	2203200	Drive Clutch Lever	1
10	GB5787-86	Hex Hd. Flange Bolt M6x60mm	1
11	2203002A	Upper Handle	1
12	90000-22	Small Spacer	4
13	XSZ56-1-09	Knob Nut M8mm	4
16	2203100	Flywheel Brake Lever	1
17	GB820-85	Phillips Hd Screw M6x50mm	1
18	WORD18.6-05	Rope Guide	1
19	GB6182-86	Nylon Insert Lock Nut M6mm	3
20	GB97.1-85	Flat Washer 6mm	3
21	2215300	Throttle Control Assembly	1
22	2203300	Cable Unit	1
23	WORD18-09	Wire Tie	4
24	XSZ56-1-15	Bolt, Handle	2
25	2203001	Lower Handle	1
26	GB801-88	Square Neck Bolt M8x40mm	2
27	2203400	Shift Lever Assembly	1



# MOWER DECK ASSEMBLY







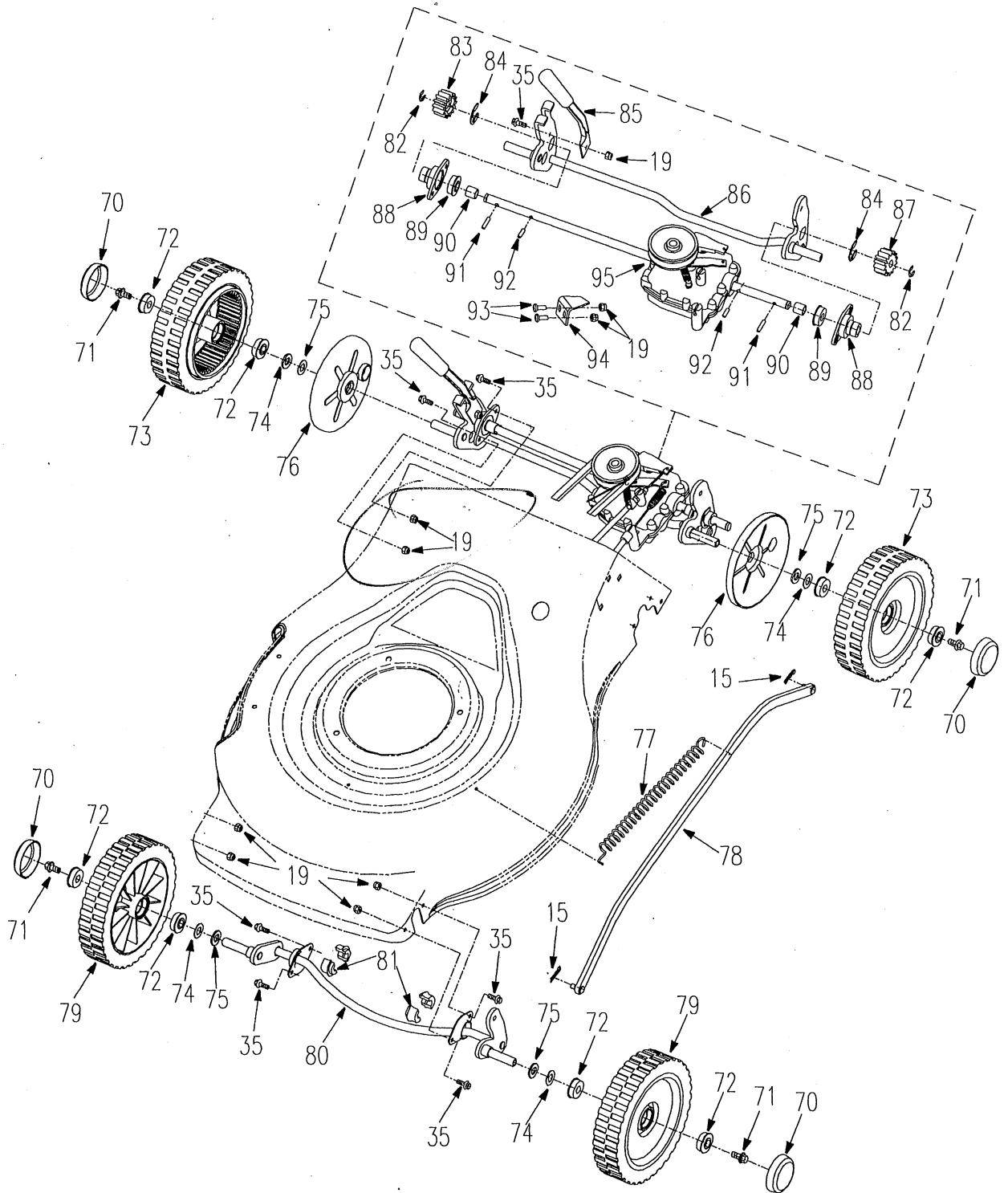
WORLD®

# MOWER DECK ASSEMBLY

REF NO.	PART NO.	DESCRIPTION	QTY.
15	XSZ56-1-17	Hair Pin	4
19	GB6182-86	Nylon Insert Lock Nut M6mm	4
20	GB97.1-85	Flat Washer 6mm	2
30	2205000	Right Bracket	1
31	2200003	Torsion Spring, Right	1
X 32	GB6182-86	Nylon Insert Lock Nut M8mm	9
33	GB801-88	Square Neck Bolt M8×16mm	6
34	2200007A	Height Adjustment Rack	1
35	GB5787-86	Hex Hd. Flange Bolt M6x16mm	2
36	2200021	Torsion Spring	1
37	2200016	Mulch Cover	1
38	2213000	Mounting Bracket, Discharging Chute	1
39	2200019	Pivot Shaft	1
40	2208000B	Mower Deck	1
41	2211000	Middle Baffle	1
42	GB5787-86	Hex Hd. Flange Bolt M8x35mm	2
43	GB5787-86	Hex Hd. Flange Bolt M8x65mm	1
44	2210000A	Rear Baffle	1

REF NO.	PART NO.	DESCRIPTION	QTY.
45	GB5787-86	Hex Hd. Flange Bolt M6x12mm	5
46	XSS46-15	Rear Guard	1
47	2200006	Rod, Rear Guard	1
48	2200002	Torsion Spring, Left	1
49	2204000	Left Bracket	1
50	2200004	Rear Cover	1
51	2200001	Rod, Rear Cover	1
52	4LZ2.16.4-04	Rubber Ring	1
53	XSZ56-2-21	Pulley Spacer	1
54	XSZ56-2-20	Woodruff Key	1
55	GB78-85	Socket Set Screw M6x8mm	2
56	XSZ56-2-22	Pulley	1
57	MXV4-370	V-Belt	1
58	2200015	Mulching Plug	1
59	2200017	Side Discharge Chute	1
60	8036	Decal, Logo	1
61	8205	Decal, Model Plate	1
62	8032	Decal, 100dB	1
63	8007	Decal, Danger	1
64	8008	Decal, Caution	1
65	8006	Decal, Warning	1
66	8051	Decal, Warning	1

# DRIVE ASSEMBLY

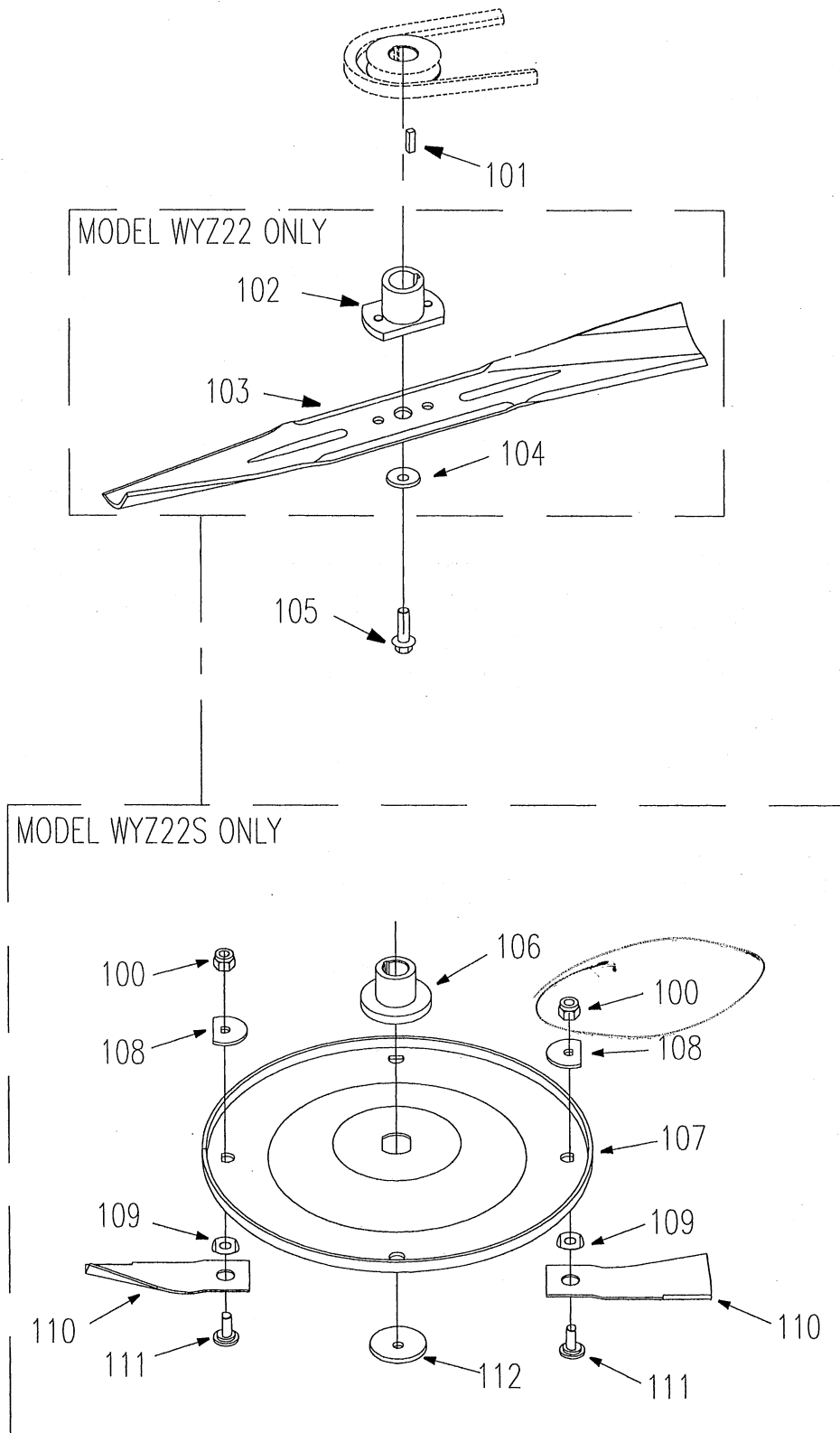




## DRIVE ASSEMBLY

REF NO.	PART NO.	DESCRIPTION	QTY.
15	XSZ56-1-17	Hair Pin	2
* 19	GB6182-86	Nylon Insert Lock Nut M6mm	9
35	GB5787-86	Hex Hd. Flange Bolt M6x16mm	9
70	2201001	Hub Cap	4
71	GB5787-86	Hex Hd. Flange Bolt M8x16mm	4
72	2201002	Wheel Bearing 1/2"	8
73	2201200	Wheel Assembly, Rear 8"x2"	2
74	GB97.1-85	Flat Washer 12 mm	4
75	GB955-87	Wave Spring Washer 12mm	4
76	2200034	Cover	2
77	WORD18-02	Tension Spring	1
78	2202000	Haul Shank Seam	1
79	2201000	Wheel Assembly, Front 8"x1.75"	2
80	2209000A	Front Shaft Assembly	1
81	WORD18-01	Nylon Bearing	4
82	GB896-86	E-Clip 9mm	2
83	2200033	Pinion Gear, Right	1
84	XSZ56-2-06	E-Clip 19mm	2
85	2207200	Cutting Height Adjustment Lever	1
86	2207100A	Rear Axle Assembly	1
87	2200032	Pinion Gear, Left	1
88	2207002	Bearing Housing	2
89	2207003	Bearing	2
90	2207001	Bronze Bushing	2
91	XSZ56-2-08	Roll Pin	2
92	GB879-86	Spring Pin 5x16mm	2
93	GB818-85	Phillips Pan Hd Screw M6x16mm	2
94	2200035	Anti Rotation Bracket	1
95	2220000	Transmission	1

# STRAIGHT BLADE /SWING BLADE ASSEMBLY



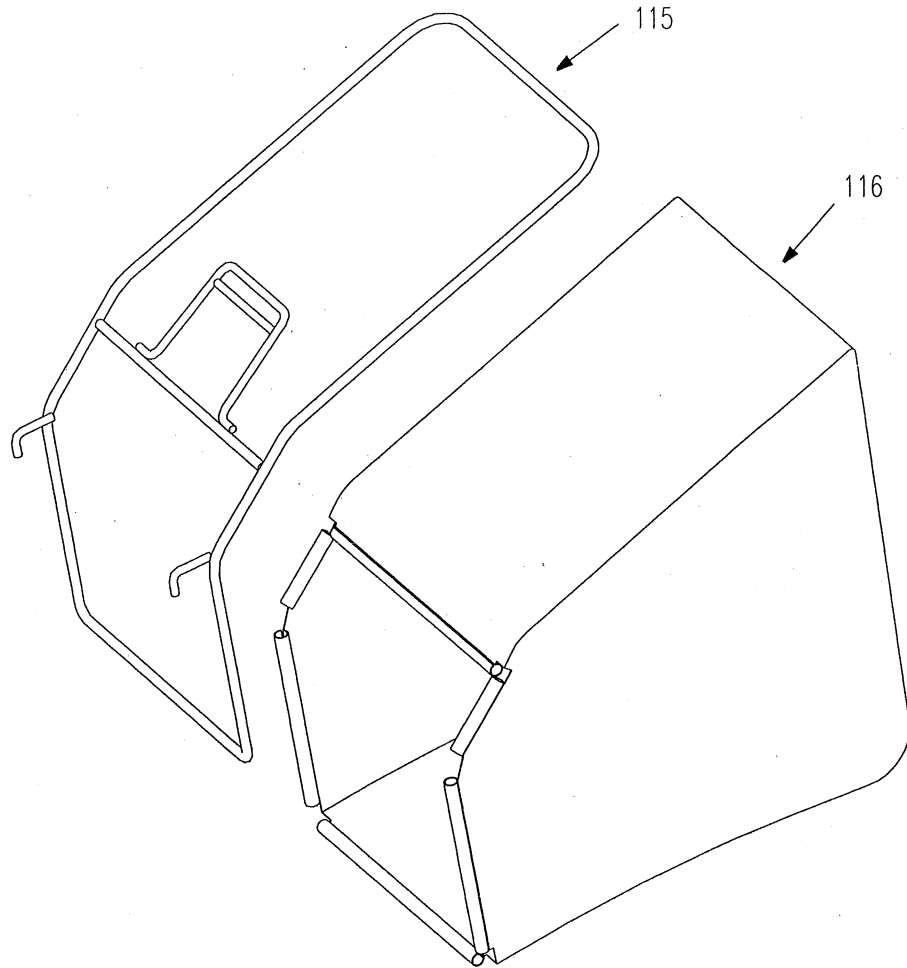


WORLD.

## STRAIGHT BLADE /SWING BLADE ASSEMBLY

REF NO.	PART NO.	DESCRIPTION	QTY.
100	GB6182-86	Nylon Insert Lock Nut M10mm	2
101	XSZ56-2-18	Square Key	1
102	XSZ56-2.4	Blade Adapter	1
103	XSZ56-2-04	Blade	1
104	XSZ56-2-17	Blade Washer	1
105	2200010	Hex Hd. Bolt 3/8" -24 /1" ×2"	1
106	WORD22-2-01	Blade Adapter	1
107	WORD 22-2.8-01	Blade Hub	1
108	WORD18.4-02	Slice pillow	2
109	WORD18.4-03	Curved Washer	2
110	WORD18.4-05	Blade	2
111	WORD18.4-01	Blade Bolt M10mm	2
112	WORD18-04	Blade Washer	1

# GRASS BAG ASSEMBLY



REF NO.	PART NO.	DESCRIPTION	QTY.
115	2206100	Bag Frame	1
116	2206300	Fabric Bag	1



WORLD.

NOTES

---

JIANGSU WORLD MACHINERY & ELECTRONIC GROUP

JIANGSU WORLD PLANT-PROTECTING MACHINERY CO., LTD.

Add: Picheng Town, Danyang City, Jiangsu Province, China

Post Code: 212311

Tel: 86-511-6348050

Fax: 86-511-6342922 86-511-6346980

Homepage: <http://www.worldgroup.com.cn>

E-MAIL: [office@worldgroup.com.cn](mailto:office@worldgroup.com.cn)