



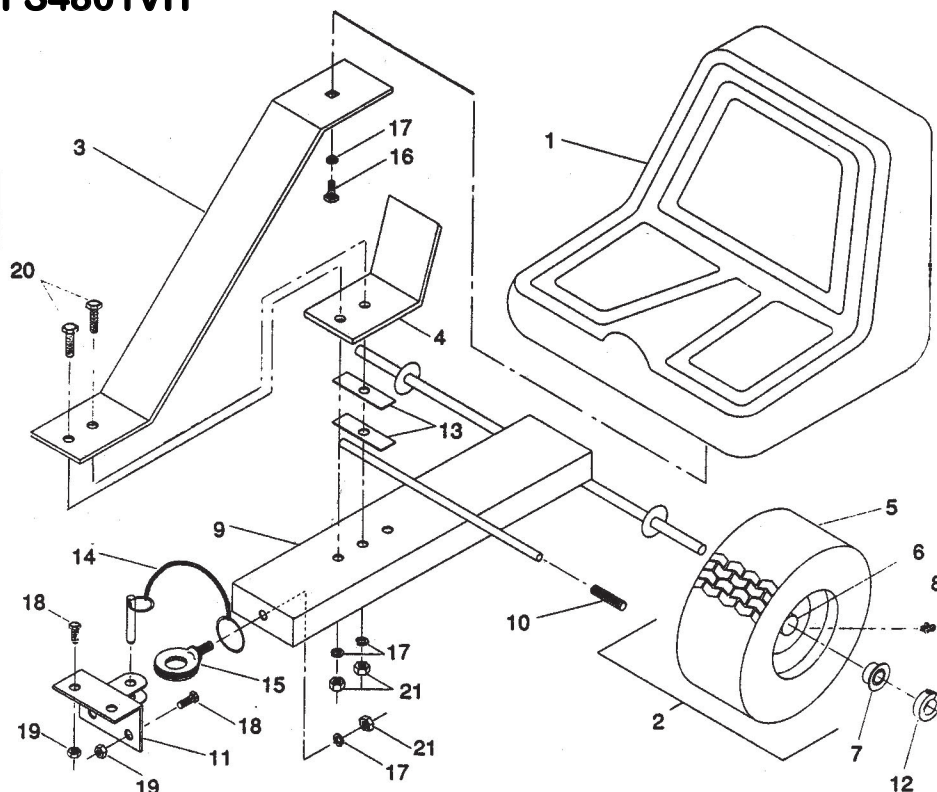
Riding Sulky Model #121001

Used on:
WY36FS481VH
WY48FS481V
WY48FS4801VH

Parts List and Assembly Instructions

WORLDLAWN®

#	PART#	QTY	NAME
1	123011	1	Seat
2	362055	2	Wheel
3	123017	1	Seat Spring
4	123014	1	Seat Stiffener
5	363186	2	Tire
6	363189	2	Drive Wheel w/Value Stem
7	363187	4	Wheel Bearing
8	111004	2	Grease Zerk
9	122001	1	Frame Assy.
10	123008	2	Footrest Grip
11	123003	1	Hitch Assy.
12	363145	2	Clamp Collar
13	123006	2	Shim
14	124001	1	Hitch Pin Assy.
15	123016	1	Eyebolt
16	106325	1	1/2x1 H.H.C.S.
17	105008	4	1/2 Lock Washer
18	100271	4	5/16x3/4 H.H.C.S.
19	104256	4	5/16 Hex Nut
20	100329	2	1/2x2 H.H.C.S.
21	104509	3	1/2 Hex Nut-Reg.
22	933001	1	Part List/ Assy. Instructions



Assembly Instructions

FIRST

Remove all items from cartons and layout in an orderly manner.

SECOND

Install (two) wheels onto axle and secure with (two) clamp collars. Tighten collars properly.

THIRD

Install (two) footrest grip on footrest.

FOURTH

Assemble seat spring stiffener and (two) shims onto frame assy. with (two) 1/2x2 capscrews, (two) 1/2 lock washers and (two) 1/2 hex nuts.

FIFTH

Assemble seat to spring with 1/2x1 capscrew.

SIXTH

Insert eyebolt through split ring (on chain) through hole in front frame plate and fasten with 1/2 lock washer and 1/2 hex nut.

SEVENTH

Fasten hitch assy. to rear deck of mower (holes provided in mower) with (four) 5/16x3/4 capscrews, (five) lock washers and (five) hex nuts.

NOTE!

The shims (designed to be placed between stiffener and frame) may be used to pitch seat forward.



WORLDLAWN®

Part Number 933001

Form 89-003

2415 Ashland Ave • Beatrice, NE 68310 • (402) 228-4255