

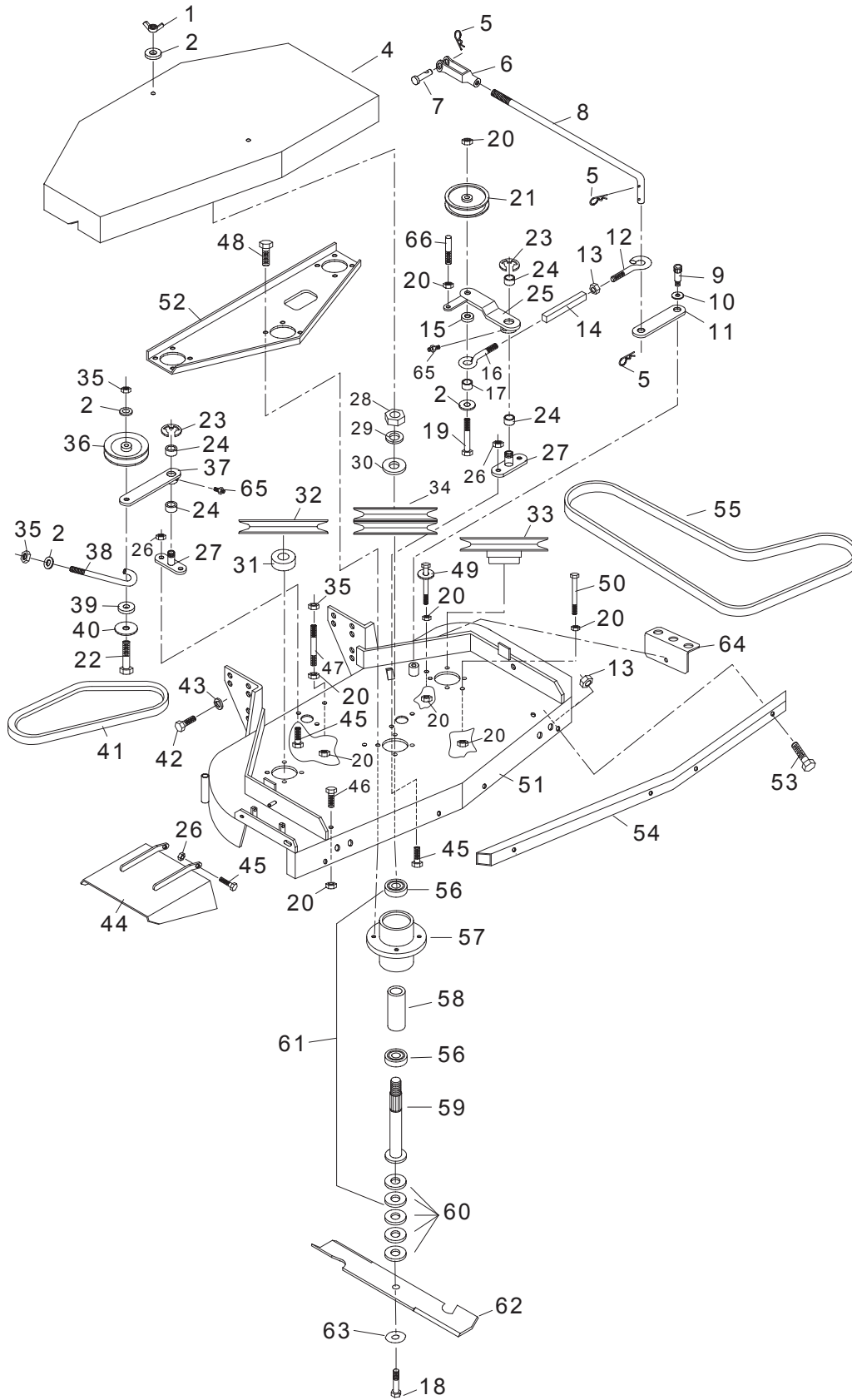


WORLDLAWN®

WY 48 FS 48 1 V

**PARTS
MANUAL**

48" FRONT DECK ASSEMBLY



BELT DRIVE WALK BEHIND 48" FRONT DECK ASSEMBLY

SEE NOTES

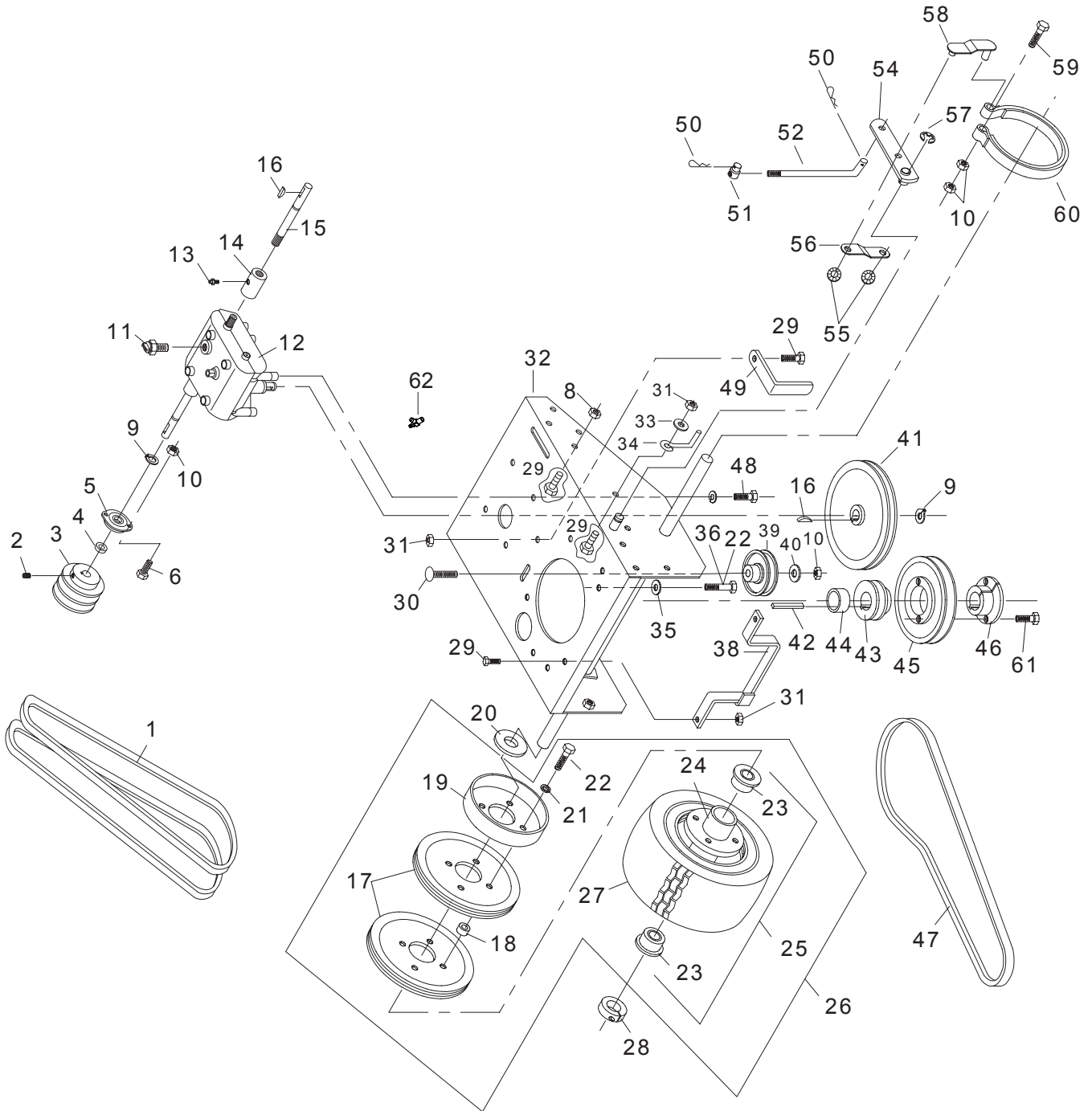
#	PART NO.	QTY	DESCRIPTION
1	103027	3	3/8" WING NUT
2	105260	4	3/8" STD. FLAT WASHER
4	482049	2	BELT COVER -WL
5	363165	3	HAIRPIN COTTER
6	363192	1	LARGE YOKE
7	363196	1	CLEVIS PIN
8	483028	1	BLADE DRIVE LINKAGE
9	109014	1	SHOULDER BOLT
10	363240	1	SHOULDER SPACER
11	363085	1	CAM LINK
12	363080	1	RIGHT EYEBOLT
13	109001	4	5/16" WHIZLOCK NUT
14	363172	1	TURNBUCKLE BODY
15	363097	1	TURNBUCKLE SPACER
16	363082	1	LEFT EYEBOLT
17	363174	1	EYEBOLT SPACER
18A	100356	2	5/8"-11 X 1 1/2" HEX BOLT
18B	100358	2	5/8"-11 X 2 1/4" HEX BOLT
19	100298	1	3/8" X 2 1/2" BOLT
20	109007	18	3/8" WHIZLOCK NUT
21	363264	1	ENGAGEMENT IDLER (WF)
22	100297	1	3/8" x 2 1/4" HEX BOLT
23	108509	1	"E" RING
24	363089	4	BRONZE BUSHING
25	362071	1	ENGAGEMENT ARM W/BUSHING
26	104256	15	5/16" NYLOC HEX NUT
27	362024	2	IDLER PIVOT ASSY.
28	104511	3	3/4"-16 HEX NUT
29	105010	3	3/4" LOCK WASHER
30	105269	3	3/4" S.A.E. FLAT WASHER
31	583110	1	PULLEY SPACER
32	583107	1	PULLEY
33	363378	1	RAISED PULLEY
34	363377	1	DOUBLE PULLEY
35	104257	3	3/8" NYLOC HEX NUT
36	483025	1	RIGHT HAND IDLER PULLEY
37	482005	1	IDLER ARM RIGHT
38	483003	1	BELT TENSION ROD
39	483017	1	RIGHT HAND IDLER SPACER
40	483019	1	RIGHT HAND IDLER WASHER
41	483031	1	RIGHT HAND BLADE BELT
42	100309	6	7/16" X 1" HEX BOLT
43	105007	6	7/16" LOCK WASHER
44	482017	1	GRASS DEFLECTOR

BELT DRIVE WALK BEHIND 48" FRONT DECK ASSEMBLY

SEE NOTES

#	PART NO.	QTY	DESCRIPTION
45	100273	8	5/16" X 1" HEX BOLT
46	100292	8	3/8" X 1" HEX BOLT
47	363090	1	BELT SHIELD SUPPORT
48	100274	12	5/16" X 1 1/4" HEX BOLT
49	362018	1	FRONT BELT GUIDE
50	100306	3	3/8" X 5" HEX BOLT
51	482019	1	48" FRONT DECK
52	482015	1	48" DECK CHANNEL
53	100276	4	5/16" X 1 3/4" HEX BOLT
54	483043	1	SQUARE BUMPER
55	483030	1	BLADE DRIVE BELT
56	363350	6	SPINDLE BEARING
57	363380	3	BLADE SPINDLE HOUSING
58	583113	3	BEARING SPACER TUBE
59	583112	3	SPINDLE SHAFT
60	363382	15	BLADE SPACER
61	363379	3	CUTTER HOUSING ASSY
62	483035	3	16" BLADE
63	583108	3	5/8" DISC SPRING WASHER
64	322019	1	SPACER BRACKET
65	322019	2	1/4" ZERK
66	363249	1	BELT SNUBBER

REAR DECK ASSEMBLY



BELT DRIVE WALK BEHIND REAR DECK ASSEMBLY

SEE NOTES

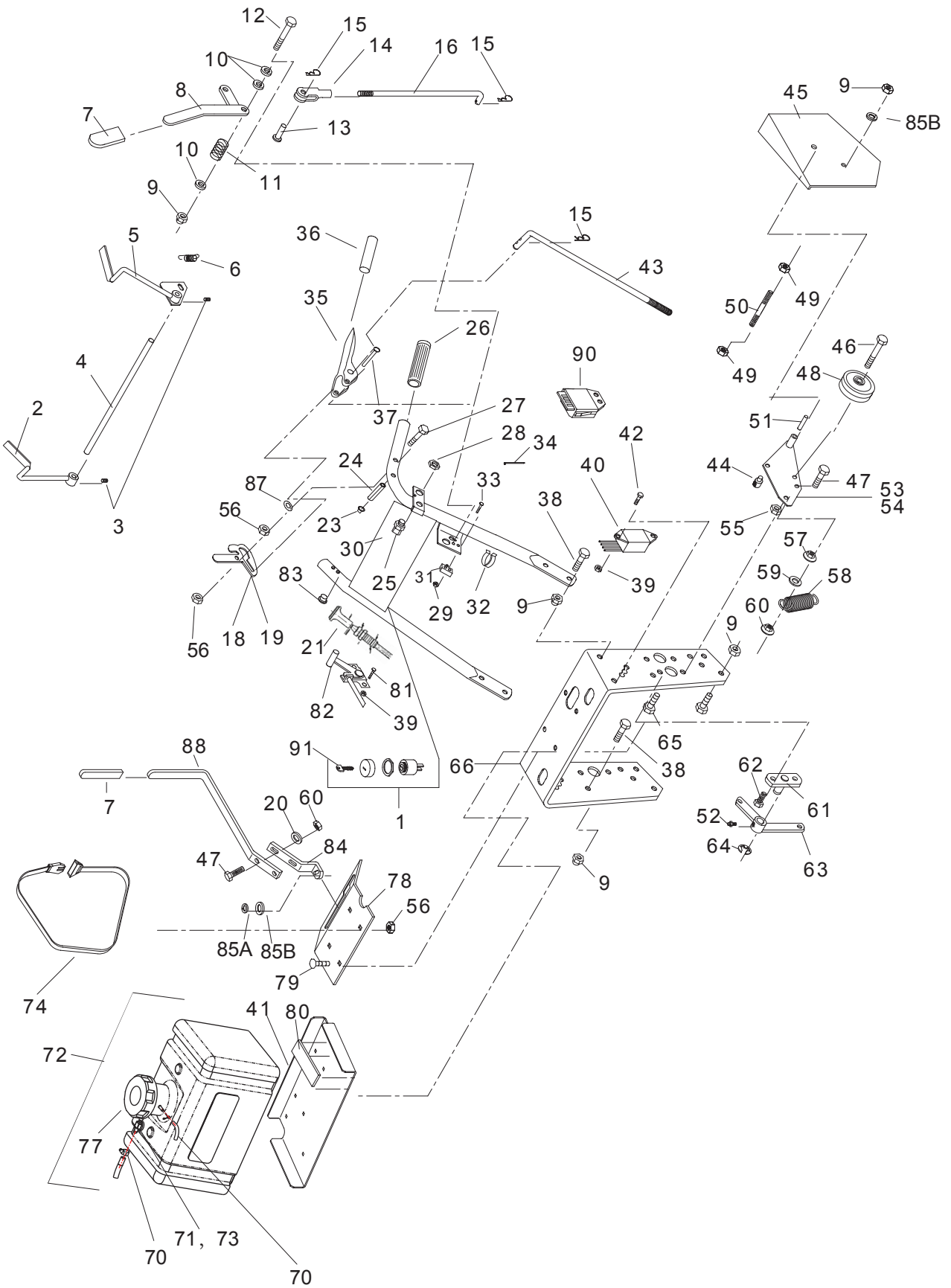
#	PART NO.	QTY	DESCRIPTION
1	363312	2	MATCH SET DRIVE BELT
2	103293	2	5/16"-18 X 3/8" SET SCREW
3	363137	2	2-GROOVE SHEAVE
4	363087	2	TRANSMISSION SHAFT SPACER
5	363292	2	2-BOLT FLANGE BEARING
6	100292	4	3/8" X 1" HEX BOLT
8	109001	2	5/16" WHIZLOCK NUT
9	108508	3	SNAP RING
10	104257	5	3/8" NYLOC HEX NUT
11	363207	1	TRANSMISSION SWITCH
12	363365	1	TRANSMISSION 9-SPLINE
13	111004	3	1/4"-28 GREASE ZERK
14	362086	2	COUPLER W/ZERK 9-SPLINE
15	363367	2	SHAFT EXTENSION 9-SPLINE
16	107009	3	#9 WOODRUFF KEY
17	363191	4	WHEEL PULLEY
18	363113	8	WHEEL PULLEY SPACER
19	363190	2	BRAKE DRUM
20	363121	2	WHEEL WASHER
21	105005	8	5/16" MED WASHER
22	100275	12	5/16" X 1 1/2" HEX BOLT (BRIGGS)
23	363187	4	WHEEL BEARING
24	363189	2	RIM W/VALVE STEM
25	362055	2	WHEEL AND TIRE
26	362048	2	DRIVE WHEEL COMPLETE
27	363186	2	TIRE 13 X 6.5 X 6
28	363145	2	1" CLAMP COLLAR
29	100273	3	5/16" X 1" HEX BOLT
30	107501	1	3/8" X 2" CARRIAGE BOLT
31	104256	3	5/16" NYLOC HEX NUT
32	362010	1	REAR DECK ASSY
33	105258	2	5/16" STD FLAT WASHER
34	363075	2	ROUND BELT GUIDE
35	363226	4	DISC SPRING WASHER
36	109018	4	8MM-1.25 x 25MM HEX BOLT (KAW)
38	482003	1	BELT GUIDE BRKT

BELT DRIVE WALK BEHIND REAR DECK ASSEMBLY

SEE NOTES

#	PART NO.	QTY	DESCRIPTION
39	363169	1	SMALL IDLER
40	105260	1	3/8" STD FLAT WASHER
41	363220	1	TRANSMISSION SHEAVE
42	107262	1	KEY 1/4" SQ. X 2 1/2"
43	363119	1	PULLEY(TO TRANSMISSION)
44	363124	1	SPACER
45	363216	1	TAPER LOCK SHEAVE
46	363215	1	1" TAPER LOCK HUB
47	363212	1	TRANSMISSION BELT
48	100271	4	5/16" X 3/4" HEX BOLT
49	523320	1	FLAT BELT GUIDE
50	363165	4	#2 HAIR PIN COTTER
51	363029	4	.312 ROD SWIVEL
52	363142	1	BRAKE ROD
54A	362041	1	BRAKE ARM RIGHT
54B	362042	1	BRAKE ARM LEFT
55	363177	4	3/8" PUSH NUT
56	363135	2	BRAKE CONNECTOR
57	108500	2	5/8" E-RING
58	362026	2	BRAKE CONNECTOR
59	100296	2	3/8" X 2" HEX BOLT
60	363176	2	BRAKE BAND
61	100252	8	1/4" X 3/4" HEX BOLT
62	343146	1	OIL DRAIN

HANDLE ASSEMBLY



BELT DRIVE WALK BEHIND HANDLE ASSEMBLY

SEE NOTES

#	PART NO.	QTY	DESCRIPTION
1	603060	1	RUN/STOP SWITCH-17HP KAW
2	362051	1	RIGHT HAND O.P.C. LEVER
3	103292	2	1/4"-28 X 1/4" SET SCREW
4	363157	1	CONNECTING ROD
5	362053	1	LEFT HAND O.P.C. LEVER
6	363155	1	O.P.C. SPRING
7	363022	2	ADJUSTMENT LEVER GRIP
8	362058	1	ENGAGEMENT LEVER W/GRIP
9	104257	1	3/8" NYLOC HEX NUT
10	105260	3	3/8" STD FLAT WASHER
11	363024	1	COMPRESSION SPRING
12	100296	1	3/8" X 2" HEX BOLT
13	363144	1	CLEVIS PIN-SMALL YOKE
14	363152	1	YOKE-SMALL
15	363165	3	HAIRPIN COTTER
16	363150	1	UPPER CRANK LINKAGE
17	103011	2	1/4" HEX TORQUE NUT
18	363284	1	LEFT THUMB LATCH PKG.
19	363282	1	RIGHT THUMB LATCH PKG.
20	105258	2	5/16" FLAT WASHER
21	523037	1	CHOKE CABLE
23	363219	2	3/16" PUSH NUT
24	106340	2	5/16" X 1" ROLL PIN
25	363208	1	O.P.C. SWITCH
26	363218	2	HANDLE GRIP
27	100258	2	1/4" X 2" HEX BOLT
28	363234	1	NUT-O.P.C. SWITCH
29	104520	2	#5-40 HEX NUT
30	362085	1	HANDLE/ W CONSOLE
31	363164	1	BLADE SWITCH
32	363221	2	CABLE CLIP
33	101252	2	#5-40 X 1" MACHINE SCREW
34	363222	7	PLASTIC TIE
35	362059	2	DRIVE LEVER W/GRIP
36	363067	2	DRIVE LEVER GRIP
37	363073	2	TRACTION LEVER PIN
38	100292	8	3/8" X 1" HEX BOLT
39	104252	1	#10-24 NYLOC HEX NUT

BELT DRIVE WALK BEHIND HANDLE ASSEMBLY

SEE NOTES

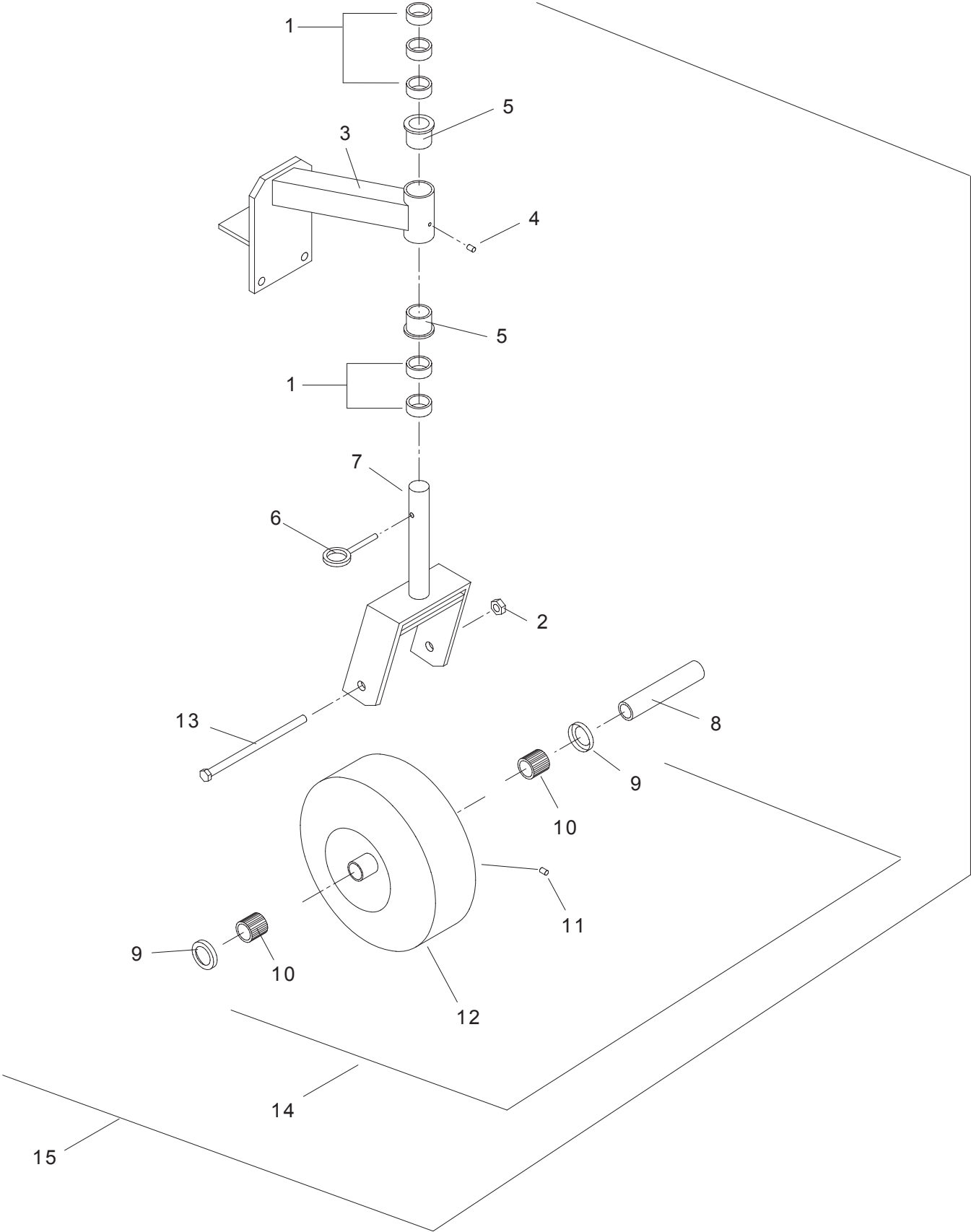
#	PART NO.	QTY	DESCRIPTION
40	363371	1	WIRING HARNESS-17HP KAW
41	363420	1	FUEL TANK MOUNT
42	101039	1	#10-24 X 5/8" PANHEAD SCREW
43	363198	2	DRIVE ROD
44	363029	4	.312 SWIVEL
45A	363288	1	LEFT HAND FENDER
45B	363286	1	RIGHT HAND FENDER
46	100331	2	1/2" X 2 1/2" HEX BOLT
47	100274	4	5/16" X 1 1/4" HEX BOLT
48	363168	2	DRIVE IDLER
49	109007	4	3/8" WHIZLOCK NUT
50	363093	2	SAFETY SHIELD SUPPORT
51	363105	2	IDLER BUSHING
52	111004	2	1/4" -28 GREASE ZERK
53	362035	1	LEFT IDLER ARM (SHOWN)
54	362037	1	RIGHT IDLER ARM
55	104259	2	1/2" NYLOC HEX NUT
56	100502	6	1/4" NYLOC HEX NUT
57	109001	2	5/16" WHIZLOCK NUT
58	363117	2	TENSION SPRING
59	105257	4	5/16" S.A.E. FLAT WASHER
60	104256	2	5/16" NYLOC HEX NUT
61	362033	1	BELL CRANK MOUNT ASSY
62	100004	2	1/4" X 1" HEX BOLT
63	362040	1	BELL CRANK W/ZERK
64	108500	1	5/8" E-RING
65	100303	2	3/8" X 4" HEX BOLT
66	363148	1	LOWER HANDLE
67	363098	4	GAS LINE CLAMP
68	363228	1	SHORT FUEL LINE HOSE
70	4805008	1	FUEL LINE
71	363418	1	FUEL SHUT OFF
72	363410	1	FUEL TANK ASSY EPA
73	3307023B	1	GROMMET
74	363368	2	FUEL TANK BELT
76	4805006	1	VENT LINE

BELT DRIVE WALK BEHIND HANDLE ASSEMBLY

SEE NOTES

#	PART NO.	QTY	DESCRIPTION	
77	5204019	1	FUEL CAP W/GASKET	1
78	363224	1	TANK SADDLE	
79	107502	4	1/4" X 3/4" CARRIAGE BOLT	
80	363201	2	FUEL TANK PAD	
81	101295	3	#10 X 1 1/2" SLTD. MACH. SCREW	
82	593043	1	THROTTLE CONTROL	
83	363159	2	NYLON BUSHING	
84	363128	1	SHIFTER BRACKET	
85A	104251	1	3/8"-24 NYLOC HEX NUT	
85B	105260	1	3/8" STD FLAT WASHER	
87	105256	1	1/4 STD FLAT WASHER	
88	362060	1	SHIFTER LEVER W/GRIP	
90	363372	1	SAFETY MODULE	
91	423209	1	IGNITION KEY	

CASTER ASSEMBLY

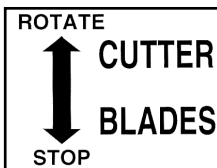


BELT DRIVE WALK BEHIND CASTER ASSEMBLY

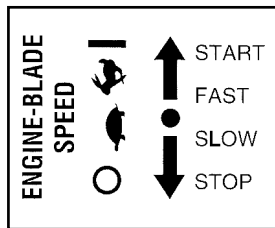
SEE NOTES

#	PART NO.	QTY	DESCRIPTION
1	363006	10	CASTER SPACER
2	104259	2	1/2"-13 NYLOC NUT
3	362007	2	CASTER SUPPORT W/BUSHINGS
4	111001	2	GREASE ZERK
5	363007	4	FLANGE BEARING
6	109020	1	QUICK PIN
7	362081	2	YOKE STRUT
8	363307	2	AXLE TUBE
9	423201	4	END CAP
10	423200	2	ROLLER BEARING
11	111005	2	GREASE ZERK
12	363260	2	SMOOTH TIRE AND TUBE
13	100339	2	1/2"-13 X 6" BOLT
14	363311	2	WHEEL COMPLETE
15	362082	2	CASTER ASSY COMPLETE

BELT DRIVE WALK BEHIND DECALS



2



3



4

CAUTION

1. READ INSTRUCTION MANUAL BEFORE OPERATING EQUIPMENT.
2. BE SURE THE OPERATING CONTROLS ARE LOCKED IN NEUTRAL BEFORE STARTING THE ENGINE.
3. MOWER SHALL NOT BE USED UNLESS ALL GUARDS ARE BOLTED IN PLACE.
4. KEEP FEET, HANDS, & ALL OBJECTS FROM UNDER DECK. KEEP PEOPLE AND PETS AT A SAFE DISTANCE.
5. USE CAUTION ON SLOPES.
6. BEFORE LEAVING OPERATOR'S POSITION:
 - A. LOCK DRIVE LEVERS IN NEUTRAL WITH LATCHES.
 - B. DISENGAGE ATTACHMENT CLUTCH.
 - C. SHUT OFF ENGINE.
7. WHEN ADJUSTING WHEELS BE SURE ENGINE IS OFF.
8. DISCONNECT SPARK PLUG WIRE BEFORE SERVICING OR CLEANING.
9. DO NOT ADD FUEL WHILE ENGINE IS WARM OR RUNNING.

363038

5

CAUTION

OPERATE MOWER WITH CHUTE DEFLECTOR BOLTED IN PLACE, EXCEPT WHEN USED WITH GRASS CATCHER. DO NOT REMOVE GRASS CATCHER UNTIL BLADE OR BLADES HAVE STOPPED.

363001

6



7

WORLDLAWN[®]

9



8



11

OPERATOR MUST DISENGAGE CLUTCH BEFORE SHIFTING GEARS

12

48

13

BELT DRIVE WALK BEHIND DECALS

#	PART NO.	QTY	DESCRIPTION
2	363037	1	Cutter Blade Label
3	363039	1	Throttle Decal
4	363289	2	Neutral Park Decal
5	363038	1	Caution/Instr. Label
6	363001	1	Caution Decal
7	363023	1	Danger Decal
8A	543291	2	Worldlawn Logo, Small
8B	363405	1	Worldlawn Logo, Large
9A	363427	1	Worldlawn Decal, Small
9B	363428	1	Worldlawn Decal, Large
11	363241	1	Gear Shift Label
12	363233	1	Shifting Label
13	8328	1	Decal, 48

Notes:

