

Parts Catalog



WORLDLAWN®

WORLD®

Commercial WY42/48 Mower

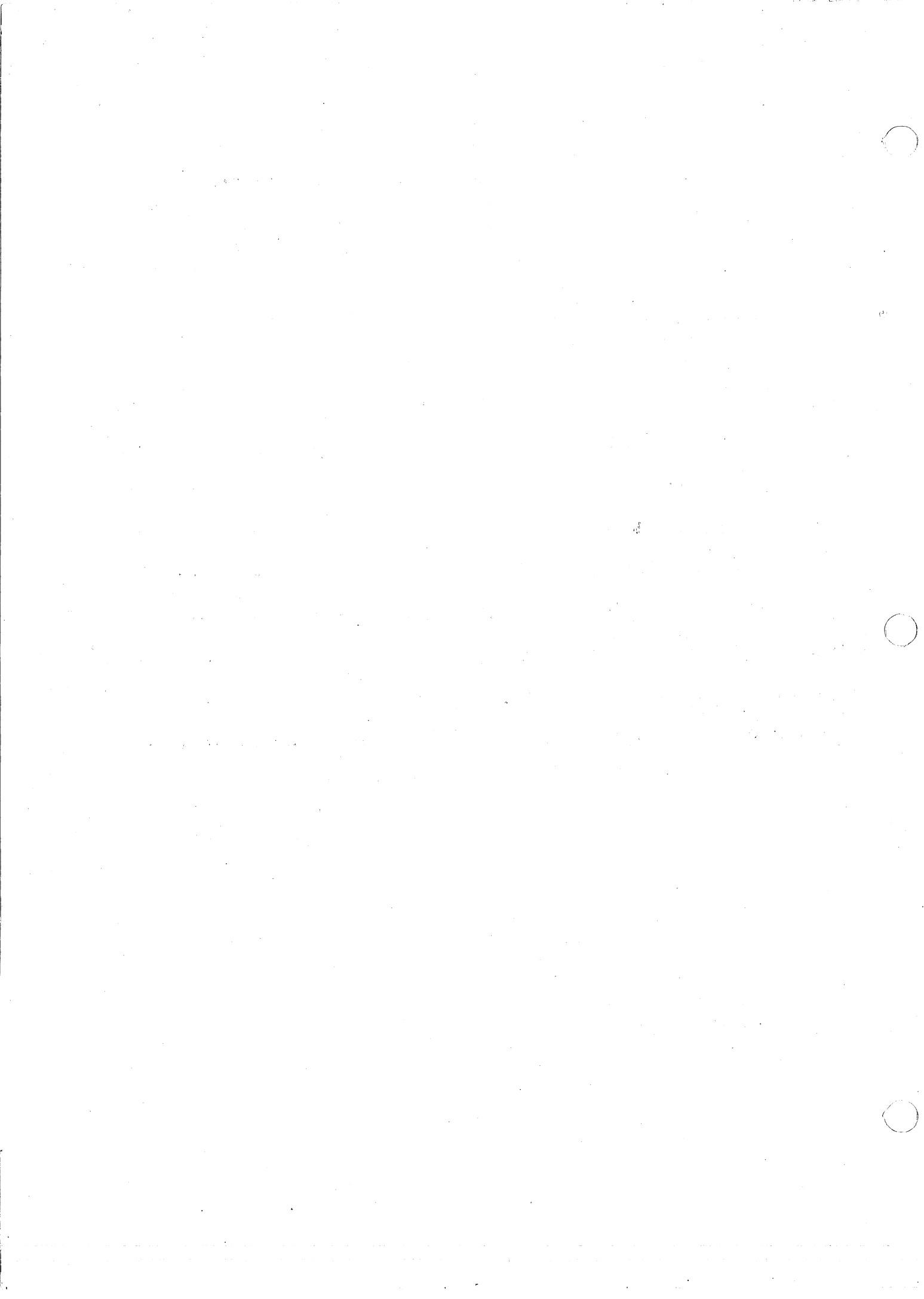
2008



Worldlawn Power Equipment, Inc.

422 Turnbull Canyon Road City of Industry CA 91744

Toll Free Number: 1-866-9-Mowers (1-866-966-9377)

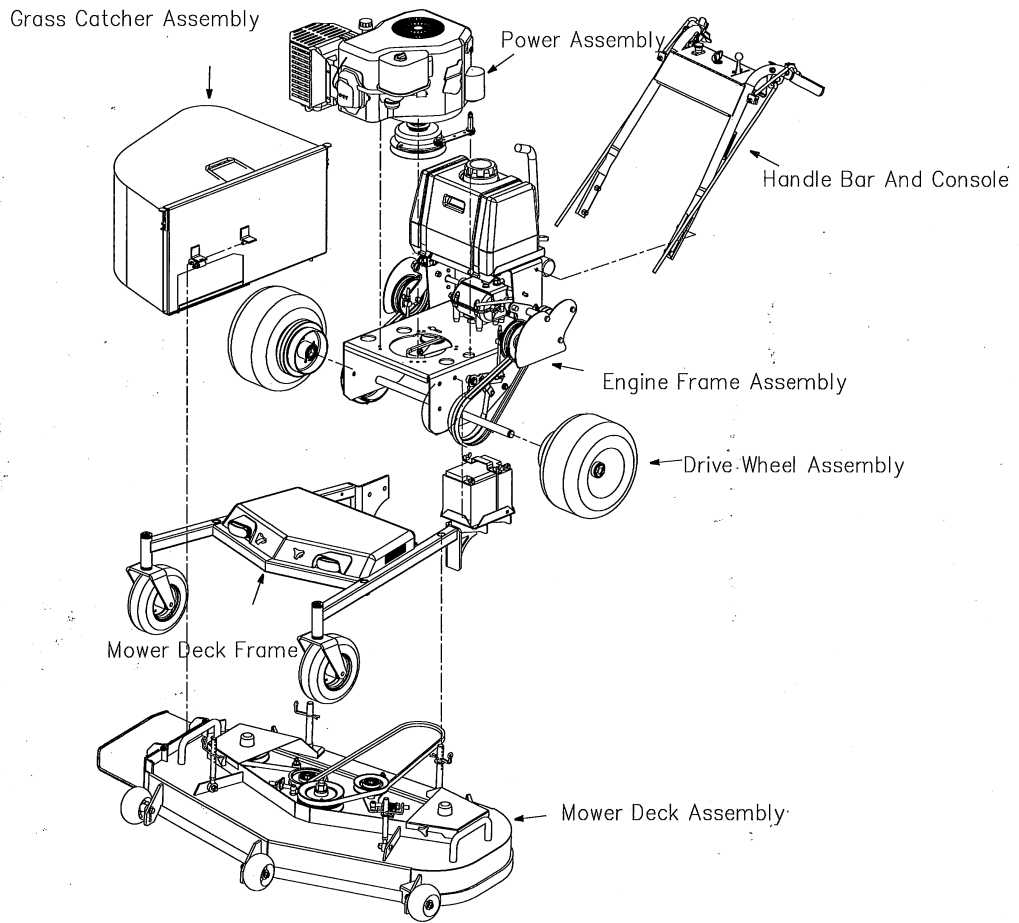




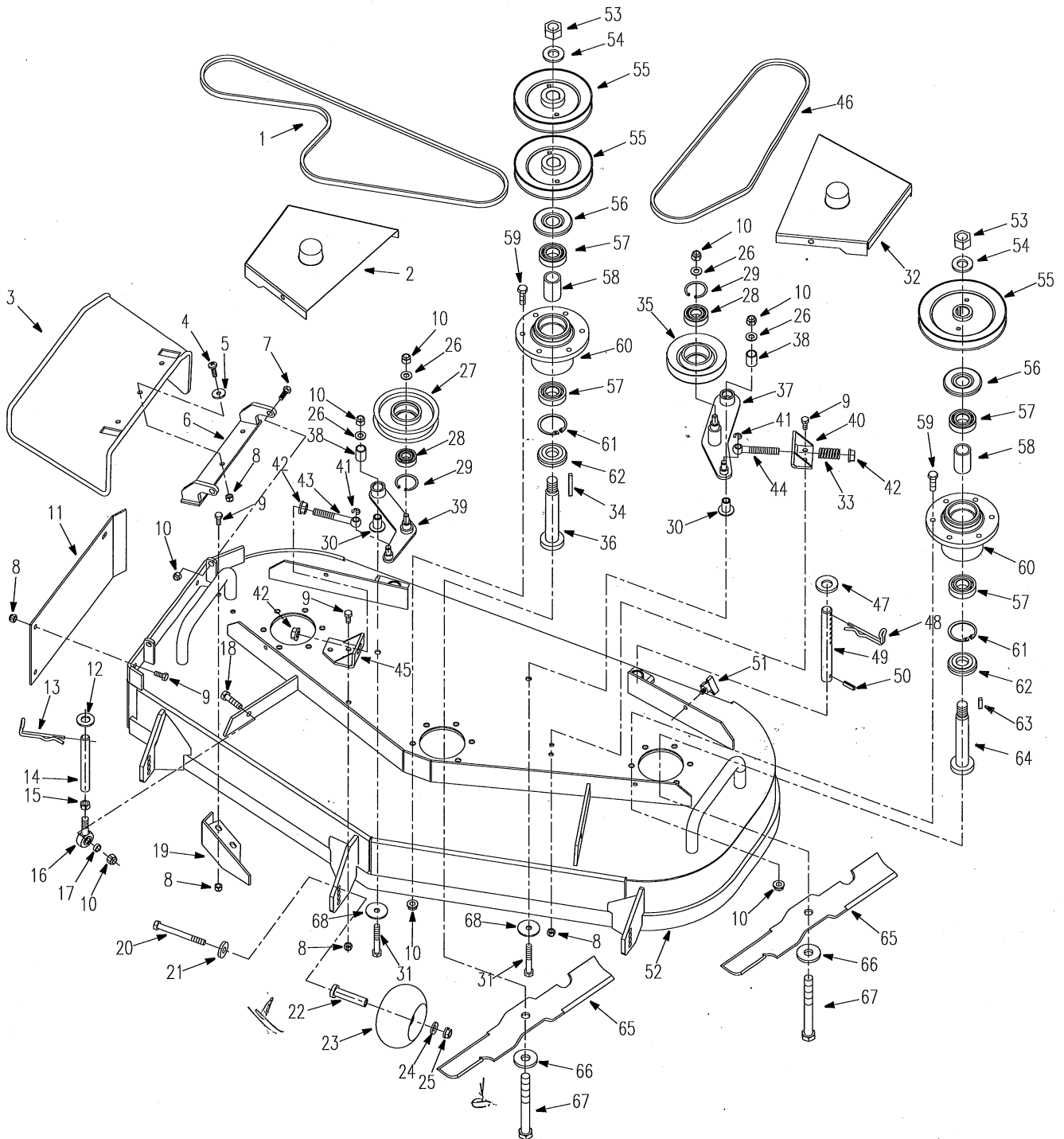
Catalog

Mower Assembly.....	1.
Mower Deck Assembly	2
Engine Frame Assembly	4
Power Assembly	6
Mower Deck Frame.....	8
Handle Bar and Console.....	10
Drive Wheel Assembly.....	11
Grass Catcher Assembly.....	12
Electrical Start-up	13
Recoil Start-up.....	14
Safety/Operation And Product Decals.....	15

Mower Assembly



Mower Deck Assembly

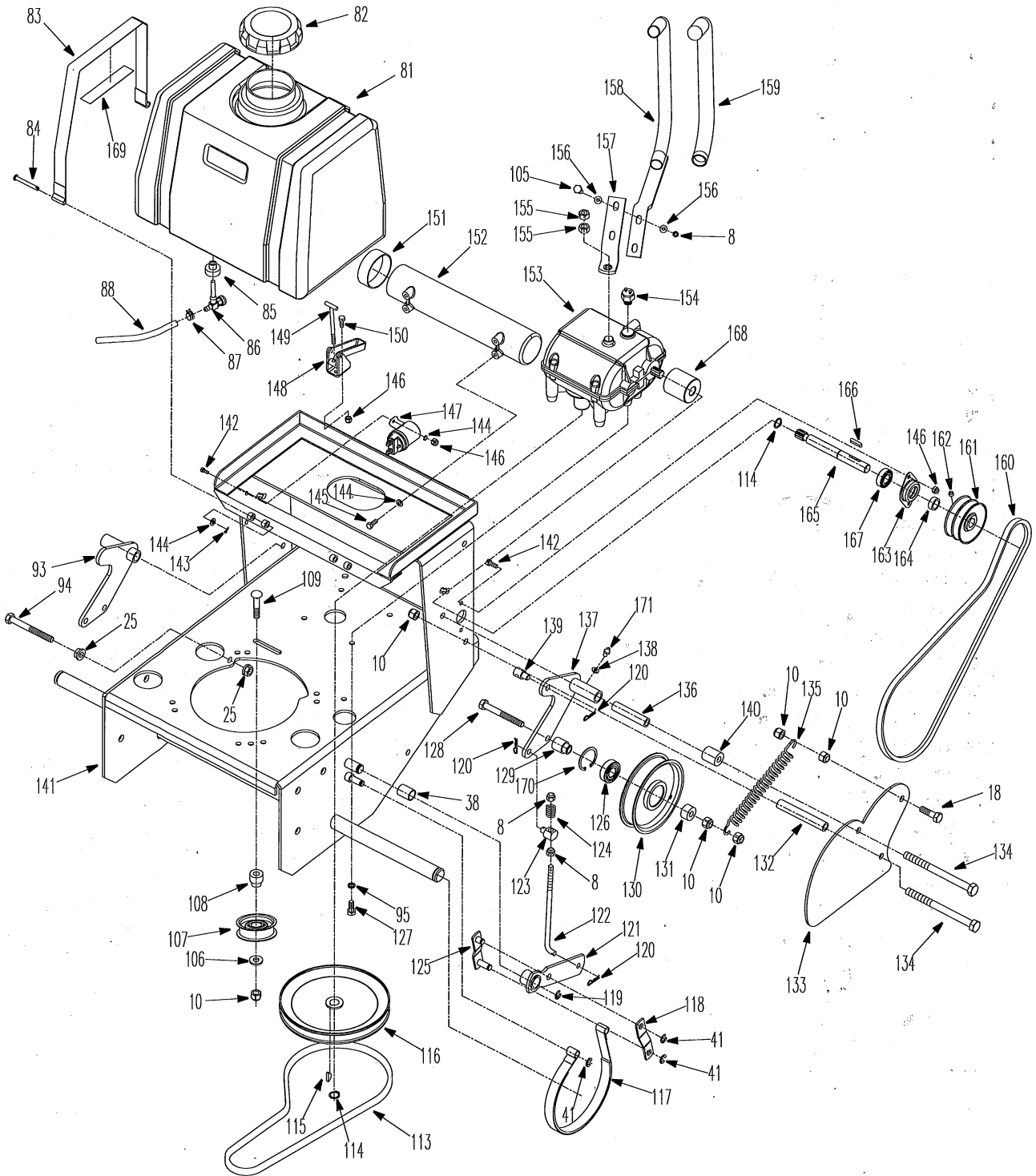


Mower Deck Assembly



REF.	PART NO.	DESCRIPTION	48	48E	42	42E	REF.	PART NO.	DESCRIPTION	48	48E	42	42E
1	4201012	Blade Drive Belt			x	x	36	4201404	Core Shaft	x	x	x	x
	4801007	Blade Drive Belt	x	x			37	4201810	Tension Pulley Seat Assembly, Left	x	x	x	x
2	4201600	Right Safety Board			x	x	38	B2685-162025	Bearing 16*20*25	x	x	x	x
	4801600	Right Safety Board	x	x			39	4201830	Tension Pulley Seat Assembly, Right	x	x	x	x
3	4801021A	Discharge Chute (Plastic)	x	x	x	x	40	4201850	Tension Fixed Seat (Left)	x	x	x	x
4	B818-825	Screw M8*25	x	x	x	x	41	B896-8	Snap Ring 8	x	x	x	x
5	3303034	Washer	x	x	x	x	42	B6187.1-12	Nut M12	x	x	x	x
6	4801022B	Bracket, Discharge Chute	x	x	x	x	43	4201010	Swing Bolt (Short)	x	x	x	x
7	B5783-1025	Bolt M10*25	x	x	x	x	44	4201011	Swing Bolt (Long)	x	x	x	x
8	B6182-8	Nut M8	x	x	x	x	45	4201840	Tension Fixed Seat (Right)	x	x	x	x
9	B5783-820	Bolt M8*20			x	x	46	4200001A	Blade Drive Belt			x	x
10	B6182-10	Locknut M10	x	x	x	x		4800005A	Blade Drive Belt	x	x		
11	4201009	Mulching Plate			x	x	47	B97.1-20	Washer 20	x	x	x	x
	4801006A	Mulching Plate	x	x			48	4800007	Latch -LH	x	x	x	x
12	B97.1-16	Washer 16	x	x	x	x	49	4801005	Rear Column (Height Adjustment)	x	x	x	x
13	4800008	Latch -RH	x	x	x	x	50	B879-826	Pin 8x26	x	x	x	x
14	4801301	Front Column	x	x	x	x	51	3302190	Bolt	x	x	x	x
15	B6170-10	Nut M10	x	x	x	x	52	4201100A	Mower Deck Assembly			x	x
16	B9163-10	Bearing SABJK10C	x	x	x	x		4801100A	Mower Deck Assembly	x	x		
17	4801302	Spacer	x	x	x	x	53	B6171-20	Nut M20x1.5	x	x	x	x
18	B5783-1040	Bolt M10x40	x	x	x	x	54	5201048	Washer (2)	x	x	x	x
19	4201008	Grass Board			x	x	55	4201403	Blade Pulley			x	x
	4801200A	Grass Board	x	x				4801403	Blade Pulley	x	x		
20	B5782-10100	Bolt M10x100	x	x	x	x	56	5201044	Safety Board, Upper	x	x	x	x
21	5201061	Washer	x	x	x	x	57	B276-6205RS	Bearing 6205-2RS	x	x	x	x
22	5201082	Caster Wheel Bushing	x	x	x	x	58	5201049	Spacer	x	x	x	x
23	5201081	Caster Wheel	x	x	x	x	59	B5783-1035	Bolt M10x35	x	x	x	x
24	5201083	Washer	x	x	x	x	60	5201050	Spindle Housing	x	x	x	x
25	B6187.1-10	Nut M10	x	x	x	x	61	B893.2-52	Spacer 52	x	x	x	x
26	3302058	Washer 10	x	x	x	x	62	5201043	Spacer	x	x	x	x
27	3302056	Idler Pulley Assembly	x	x	x	x	63	B1096-625 B	Key B6x25	x	x	x	x
28	B276-6303RS	Bearing 6203-2RS	x	x	x	x	64	4201405	Core Shaft	x	x	x	x
29	B893.2-47	Spacer 47	x	x	x	x	65	4201401	Blade			x	x
30	4201801	Bushing	x	x	x	x		4201401A	Mulching Blade (Accessory)			x	x
31	B5782-1055	Hex Hd Bolt M10x55	x	x	x	x		4801401	Blade	x	x		
32	4201700	Safety Board (Left)			x	x		4801401A	Mulching Blade (Accessory)	x	x		
	4801700	Safety Board (Left)	x	x			66	5201042	Washer (1)	x	x	x	x
33	3332005	Compression Spring	x	x	x	x	67	B5785-1660	Bolt M16x1.5x60	x	x	x	x
34	B1096-650B	Key B6x50	x	x	x	x	68	5201067	Spacer				
35	2802070	Idler Pulley	x	x	x	x							

Engine Frame Assembly

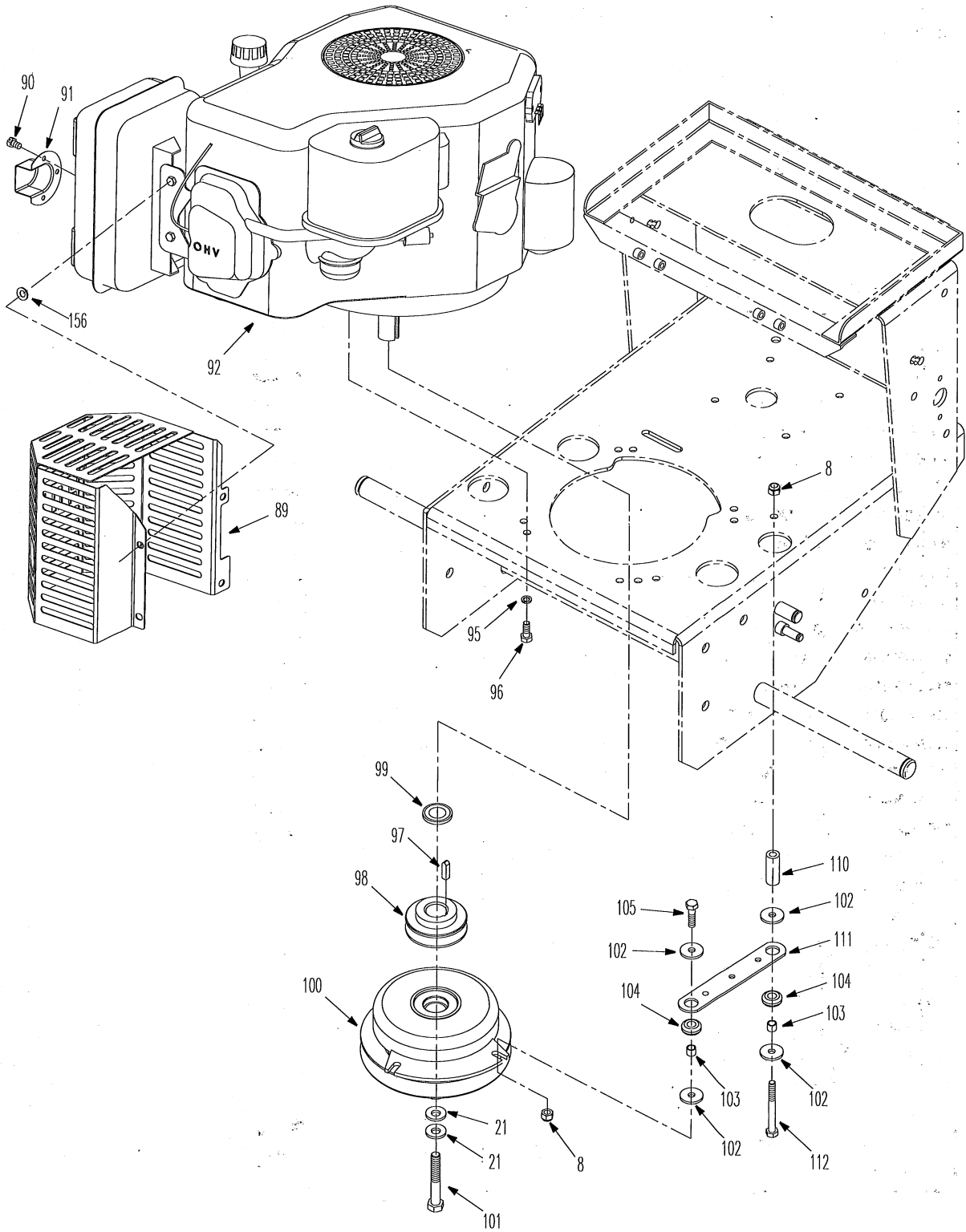


Engine Frame Assembly



REF.	PART NO.	DESCRIPTION	48	48E	42	42E
8	B6182-8	Nut M8	x	x	x	x
10	B6182-10	Locknut M10	x	x	x	x
18	B5783-1040	Bolt M10x40	x	x	x	x
25	B6187.1-10	Nut M10	x	x	x	x
38	B2685-162025	Bearing 16*20*25	x	x	x	x
41	B896-8	Snap Ring 8	x	x	x	x
81	4805001	Fuel Tank	x	x	x	x
82	4805005	Gas Cap	x	x	x	x
83	4805010	Fuel Tank Mounting Strap Assembly	x	x	x	x
84	4805003	Axis Pin	x	x	x	x
85	3307023	Fuel Tank Bushing	x	x	x	x
86	3307024	Fuel Tank Shut-off	x	x	x	x
87	3307025	Hose Clamp	x	x	x	x
88	4805004	Fuel Line	x	x	x	x
93	4806300A	Idler Bracket RH	x	x	x	x
94	B5782-1090	Bolt M10x90	x	x	x	x
95	B93-8	Washer 8	x	x	x	x
105	B5783-830	Bolt M8x30	x	x	x	x
106	4808002	Washer	x	x	x	x
107	2800034	Idler Pulley, Wheel Drive,	x	x	x	x
108	4808003	Spacer	x	x	x	x
109	B801-1050	Bolt M10x50	x	x	x	x
113	4800006	Transmission Drive Belt	x	x	x	x
114	B894.1-16	Spacer 16	x	x	x	x
115	4802011	Key Woodruff	x	x	x	x
116	4802300	Transmission Drive Pulley	x	x	x	x
117	4806430	Brake Band	x	x	x	x
118	4806401	Control Rod	x	x	x	x
119	B896-12	Snap Ring 12	x	x	x	x
120	4806002	Hair Pin	x	x	x	x
121	4806410	Brake Lever	x	x	x	x
122	4806001	Brake Rod	x	x	x	x
123	4806010	Swivel Joint	x	x	x	x
124	2800017	Tension Spring	x	x	x	x
126	B276-6203RS	Bearing 6203-2RS	x	x	x	x
125	4806420	Control Rod Weldment	x	x	x	x
127	4802012	Bolt 5/16-18x3/4	x	x	x	x
128	B5782-1085	Bolt 10x85	x	x	x	x
129	4806101	Spacer	x	x	x	x
130	5201012	Idler Pulley Assembly	x	x	x	x
131	4806102	Cushion	x	x	x	x

REF.	PART NO.	DESCRIPTION	48	48E	42	42E
132	4806012	Spacer	x	x	x	x
133	4806005	Belt Guard Plate	x	x	x	x
134	B5782-10125	Bolt M10x125	x	x	x	x
135	4806004	Idler Spring	x	x	x	x
136	4806007	Spacer	x	x	x	x
137	4806500A	Idler Bracket LH	x	x	x	x
138	B861.2-6	Washer 6	x	x	x	x
139	4806003	Swivel Joint	x	x	x	x
140	4806008	Cushion	x	x	x	x
141	4802100	Engine Frame Weldment	x	x	x	x
142	B5783-620	Bolt M6x20	x	x	x	x
143	B91-210	Split Pin 2*10	x	x	x	x
144	B97.1-6	Washer 6	x	x	x	x
145	B5285-6313F	Screw ST 6.3*13	x	x	x	x
146	B6182-6	Nut M6	x	x	x	x
147	4807104	Start-up Relay		x		x
148	4802710	Bracket Rivet	x	x	x	x
149	4802720	Control Rod	x	x	x	x
150	B5787-616	Hex Hd Bolt M6x16	x	x	x	x
151	2800052	Tool Kit Cap	x	x	x	x
152	2800051	Tool Kit	x	x	x	x
153	4802500	Transmission	x	x	x	x
154	4807006	Transmission Switch	x	x	x	x
155	4802010	Nut 3/8-24 UNF	x	x	x	x
156	B97.1-8	Washer 8	x	x	x	x
157	4802007	Gear Shift	x	x	x	x
158	4802400	Gear Shift Extension	x	x	x	x
159	4802004	Rubber Pad	x	x	x	x
160	4800004	Drive Belt	x	x	x	x
161	4802200A	Drive Pulley Assembly	x	x	x	x
162	B80-86	Screw M8x6	x	x	x	x
163	2800011	Spindle Housing	x	x	x	x
164	4802006	Spacer	x	x	x	x
165	4802005	Shaft	x	x	x	x
166	B1096-525	Key 5x25	x	x	x	x
167	99502H	Bearing 99502H-2RS	x	x	x	x
168	4802008	Spline Housing	x	x	x	x
169	4805002	Rubber Strip	x	x	x	x
170	B893.1-40	Spacer 40	x	x	x	x
171	B1152-6	Grease Fitting M6	x	x	x	x



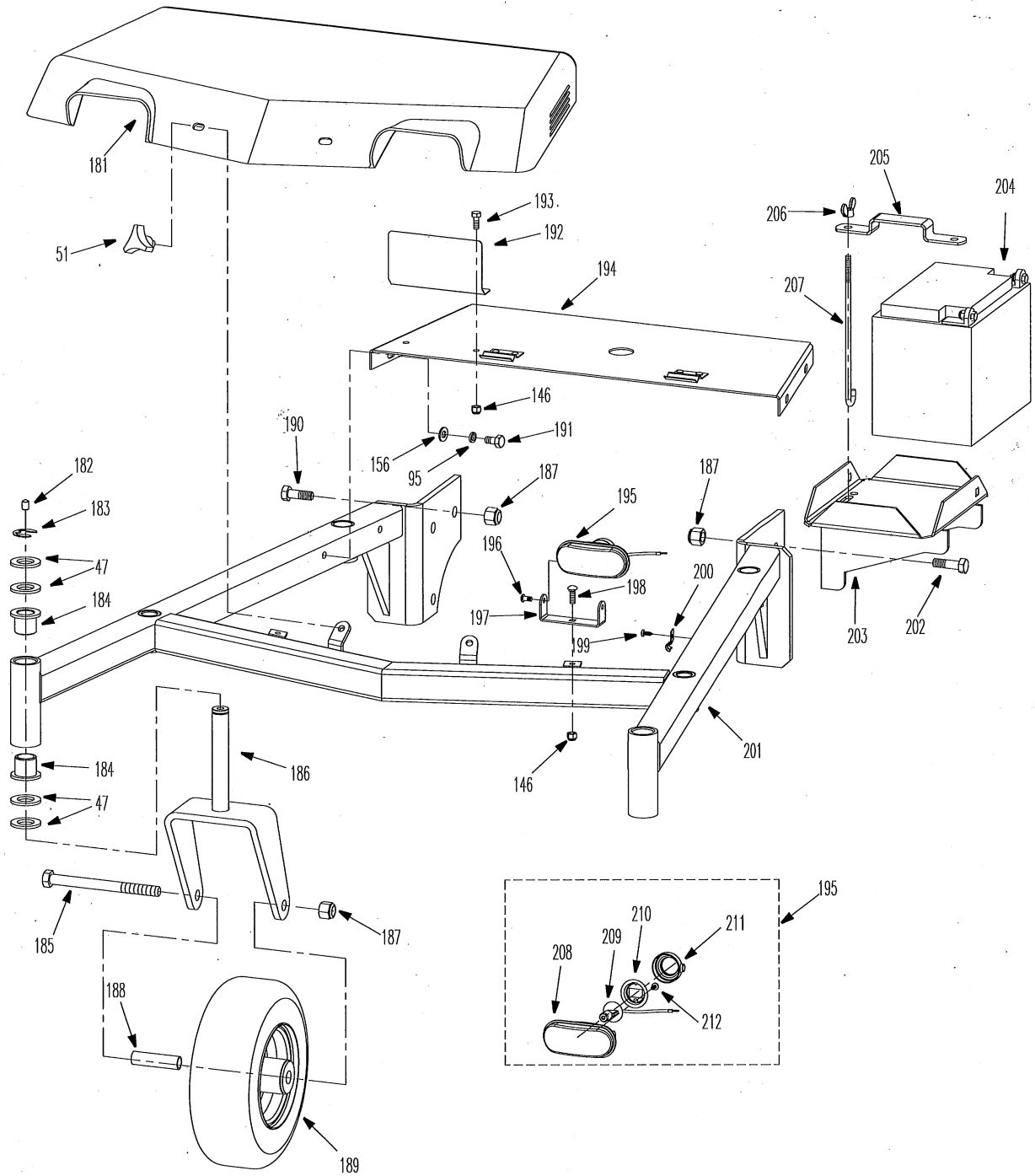
Power Assembly



REF.	PART NO.	DESCRIPTION	48	48E	42	42E
8	B6182-8	Nut M8	x	x	x	x
21	5201061	Washer	x	x	x	x
156	B97.1-8	Washer 8	x	x	x	x
89	4804007	Safety Cover	x	x	x	x
90	B845-5513	Screw ST 5.5×13	x	x	x	x
91	4804008	Vent-pipe	x	x	x	x
92	4204004	15HP CV15-Electric (Kohler)				x
	4204004B	15HP FH430V-S22-Recoil (Kawasaki)			x	
	4204004A	15HP FH430V-S20- Electric (Kawasaki)				x
	4804004	18HP CV493-Electric (Kohler)		x		
	4804004B	17HP FH541-Recoil (Kawasaki)	x			
	4804004A	17HP FH541-Electric (Kawasaki)		x		
95	B93-8	Washer 8	x	x	x	x
96	B5783-825	Bolt M8×25	x	x	x	x

REF.	PART NO.	DESCRIPTION	48	48E	42	42E
97	4804002A	Key C6.35×20	x	x	x	x
98	4804003A	Pulley	x	x	x	x
99	5203403	Spacer	x	x	x	x
100	4804005	Clutch	x	x	x	x
101	4804006	Bolt 7/16-20UNF×2-1/2	x	x	x	x
102	5203408	Washer	x	x	x	x
103	5203409	Spacer	x	x	x	x
104	5203410	Rubber Ring 17	x	x	x	x
105	B5783-830	Bolt M8×30	x	x	x	x
110	4804001B	Spanner	x	x	x	x
111	5203411	Bracket	x	x	x	x
112	B5782-875	Bolt M8×75	x	x	x	x

Mower Deck Frame



Mower Deck Frame

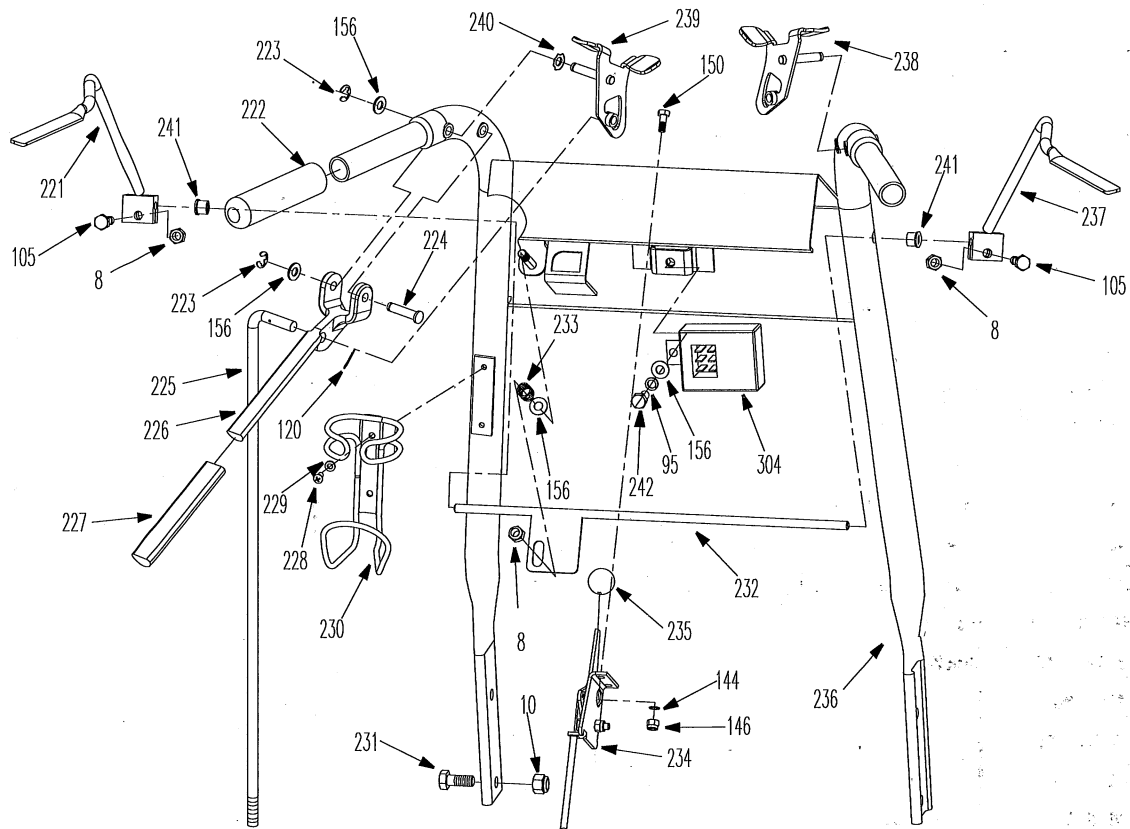


REF.	PART NO.	DESCRIPTION	48	48E	42	42E
47	B97.1-20	Washer 20	x	x	x	x
51	3302190	Bolt	x	x	x	x
95	B93-8	Washer 8	x	x	x	x
146	B6182-6	Nut M6	x	x	x	x
156	B97.1-8	Washer 8	x	x	x	x
181	4800009	Belt Cover	x	x	x	x
182	B1155-8	Grease Fitting 8	x	x	x	x
183	B896-15	Snap Ring 15	x	x	x	x
184	3301003	Oillite Bronze Bushing	x	x	x	x
185	B5782-12140	Bolt M12*140	x	x	x	x
186	4803200	Caster Wheel Yoke	x	x	x	x
187	B6182-12	Nut M12	x	x	x	x
188	4803001	Bushing	x	x	x	x
189	4803100	Caster Wheel Assembly	x	x	x	x
190	B5783-1230	Bolt M12*30	x	x	x	x
191	B5783-816	Bolt M8*16	x	x	x	x
192	4800020	Heat Insulation Plate	x	x	x	x
193	B5783-616	Bolt M6x16	x	x	x	x
194	4212000	Safety Board			x	x
	4812000	Safety Board	x	x		

REF.	PART NO.	DESCRIPTION	48	48E	42	42E
195	4803401	Light (Hy-031)	x	x	x	x
196	B818-510	"+" Screw M5*10	x	x	x	x
197	4803402	Bracket	x	x	x	x
198	B801-616	Bolt M6*16	x	x	x	x
199	B15856-4819	Screw ST 4.8x19	x	x	x	x
200	XSZ56-1-18	Cable Clip	x	x	x	x
201	4203300	Mower Deck Frame			x	x
	4803300	Mower Deck Frame	x	x		
202	B5783-1235	Bolt M12*35		x		x
203	4814100	Battery Bracket		x		x
204	5208201	12V Battery		x		x
205	5208202	Battery Strap		x		x
206	B62-6	Butterfly Nut M6		x		x
207	5208203	Hook Rod		x		x
208	4803401-1	Lamp Globe	x	x	x	x
209	4803401-2	Light Bulb	x	x	x	x
210	4803401-3	Light Socket	x	x	x	x
211	4803401-4	Spacer	x	x	x	x
212	B845-226	Screw ST 2.2x6	x	x	x	x



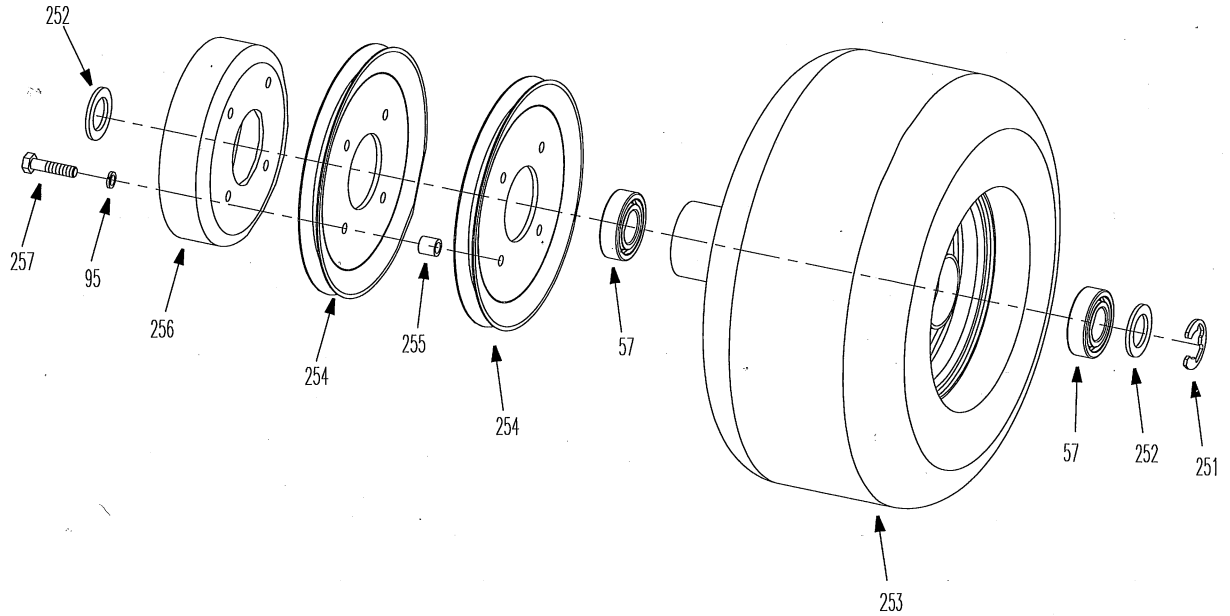
Handle Bar And Console



REF.	PART NO.	DESCRIPTION	48	48E	42	42E
8	B6182-8	Nut M8	x	x	x	x
10	B6182-10	Locknut M10	x	x	x	x
95	B93-8	Washer 8	x	x	x	x
105	B5783-830	Bolt M8x30	x	x	x	x
120	4806002	Hair Pin	x	x	x	x
144	B97.1-6	Washer 6	x	x	x	x
146	B6182-6	Nut M6		x		x
156	B5787-616	Hex Hd Bolt M6x16	x	x	x	x
156	B97.1-8	Washer 8	x	x	x	x
221	4806710	Operator Presence Lever, LH	x	x	x	x
222	3306005	Handle Grip	x	x	x	x
223	B896-6	Snap Ring 6	x	x	x	x
224	4806011	Axis Pin	x	x	x	x
225	4806006	Brake Control Rod	x	x	x	x
226	4806009	Steering Lever, LH	x	x	x	x
227	4806014	Handle Grip	x	x	x	x
228	B67-510	Screw M5x10	x	x	x	x

REF.	PART NO.	DESCRIPTION	48	48E	42	42E
228	B67-510	Screw M5x10	x	x	x	x
229	B93-5	Washer 5	x	x	x	x
230	2806090	Cup Holder	x	x	x	x
231	B5787-1030	Bolt M10x30	x	x	x	x
232	4806720	Control Rod	x	x	x	x
233	4806013	Compression Spring	x	x	x	x
234	3306004	Throttle Control Assembly (Kohler)	x	x	x	x
	3336019	Throttle Control Assembly (Kawasaki)	x	x	x	x
235	3306030	Knob	x	x	x	x
236	4806200	Handle Bar Assembly	x	x	x	x
237	4806730	Operator Presence Lever, RH	x	x	x	x
238	4806810	Latch Bracket-RH	x	x	x	x
239	4806910	Latch Bracket-LH	x	x	x	x
240	B955-8	Washer	x	x	x	x
241	2806010	Bushing	x	x	x	x
242	B5783-818	Bolt M8x18		x		x
304	4807103	Relay Set		x		x

Drive Wheel Assembly

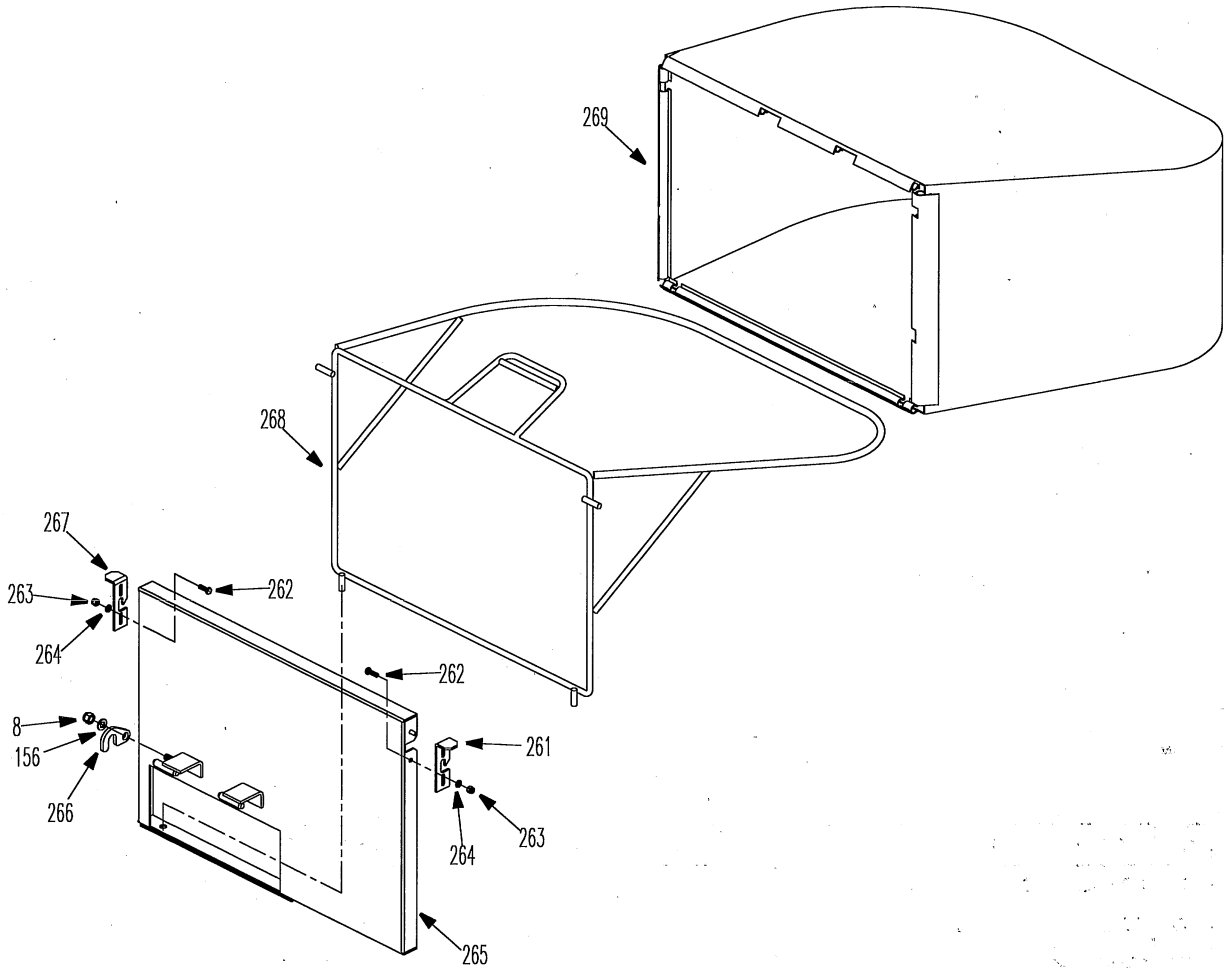


REF.	PART NO.	DESCRIPTION	48	48E	42	42E
57	B276-6205RS	Bearing 6205-2RS	x	x	x	x
95	B93-8	Washer 8	x	x	x	x
251	XSZ56-2-06	Snap Ring 19	x	x	x	x
252	4809001	Washer	x	x	x	x
253	4809100	Tire & Rim Assembly	x	x	x	x

REF.	PART NO.	DESCRIPTION	48	48E	42	42E
254	4809002	Differential Pulley	x	x	x	x
255	4809003	Spacer	x	x	x	x
256	4809004	Brake Drum	x	x	x	x
257	B5783-835	Bolt M8*35	x	x	x	x



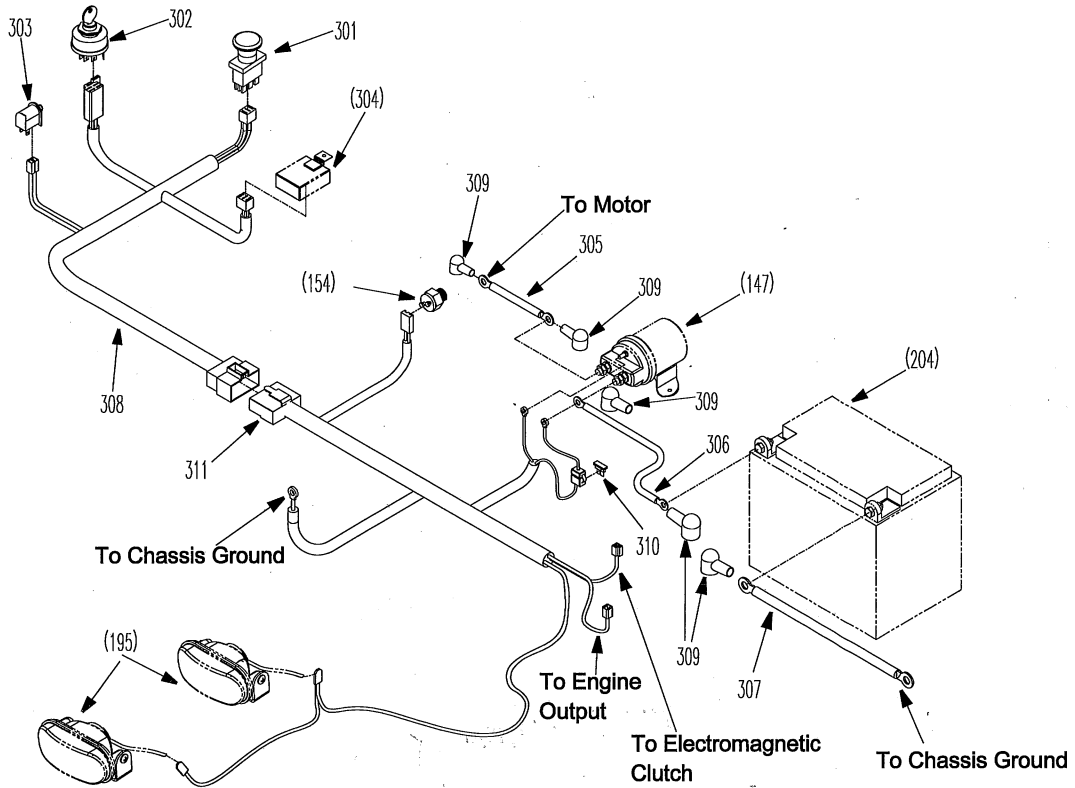
Grass Catcher Assembly(accessory)



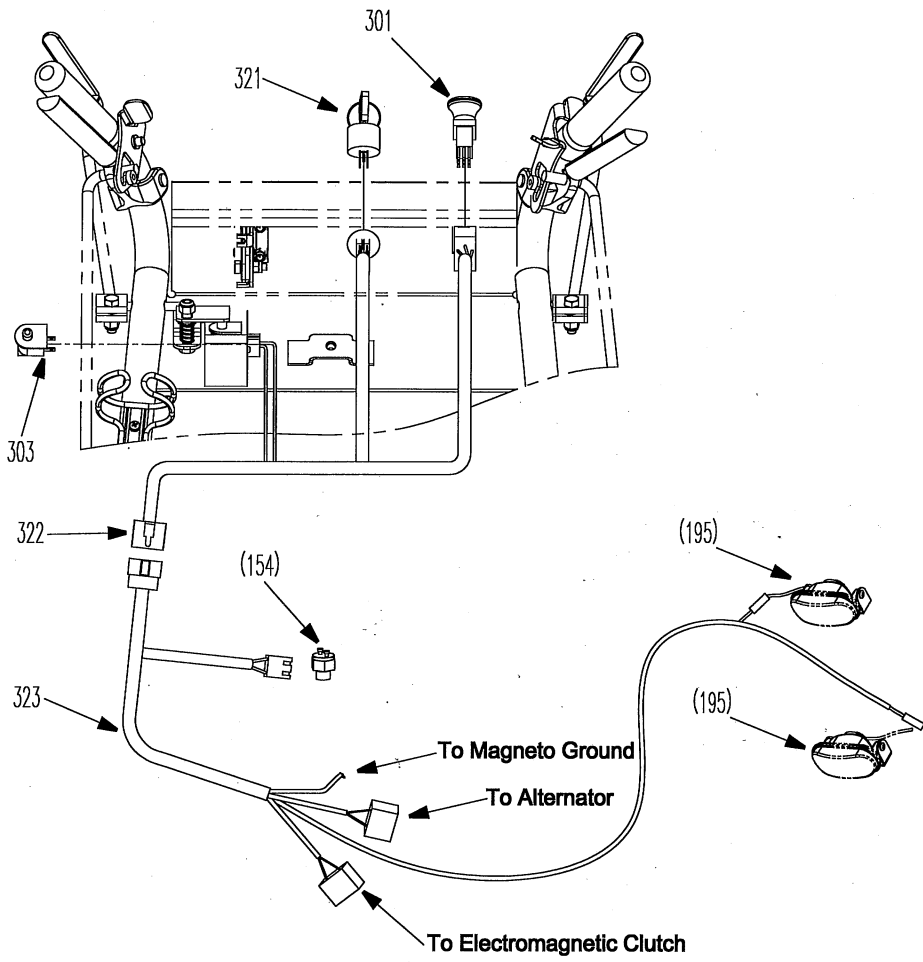
REF.	PART NO.	DESCRIPTION	48	48E	42	42E
8	B6182-8	Nut M8	x	x	x	x
156	B97.1-8	Washer 8	x	x	x	x
261	2802202	Grass Catcher Latch, LH	x	x	x	x
262	B823-520	Screw M5*20	x	x	x	x
263	B6182-5	Nut M5	x	x	x	x
264	B97.1-5	Washer 5	x	x	x	x

REF.	PART NO.	DESCRIPTION	48	48E	42	42E
265	4810100A	Grass Catcher Mount Weldment	x	x	x	x
266	4810101	Lock Catch	x	x	x	x
267	2802203	Grass Catcher Latch, RH	x	x	x	x
268	4810200	Grass Catcher Wire Frame	x	x	x	x
269	4810300	Grass Catcher Bag	x	x	x	x

Electrical Start-up

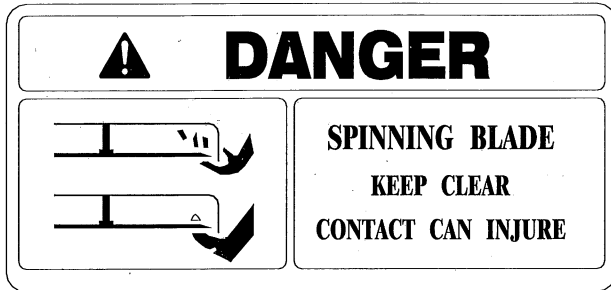


REF.	PART NO.	DESCRIPTION	48	48E	42	42E
147	4807104	Start-up Relay		x		x
154	4807006	Transmission Switch	x	x	x	x
195	4803401	Light (Hy-031)	x	x	x	x
204	5208201	12V battery		x		x
301	4807005	Blade Switch	x	x	x	x
302	5208003	Ignition Switch (Electric)		x		x
303	2808001	Handle Switch	x	x	x	x
304	4807103	Relay Set		x		x
305	2808106	Motor Pole Cable		x		x
306	4807105	Positive Pole Cable-Battery		x		x
307	4807106	Negative Pole Cable-Battery		x		x
308	4807108	Wire Harness, Handle (42&48)		x		x
309	2808107	Cover		x		x
310	4807107	Fuse 30A		x		x
311	4807109	Wire Harness, Console (Kohler) 42&48		x		x
	4807110	Wire Harness, Console (Kawasaki) 42&48		x		x

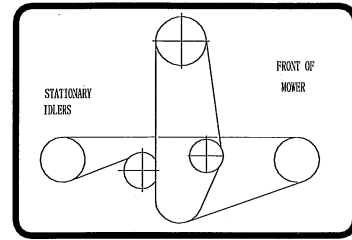


REF.	PART NO.	DESCRIPTION	48	48E	42	42E
154	4807006	Transmission Switch	x	x	x	x
195	4803401	Light (Hy-031)	x	x	x	x
301	4807005	Blade Switch	x	x	x	x
303	2808001	Handle Switch	x	x	x	x
321	4807003	Key Switch	x		x	
322	4807007	Wire Harness, Handle 42&48	x		x	
323	4807008	Wire Harness, Console, (Kohler) 42&48	x		x	
	4807009	Wire Harness, Console (Kawasaki) 42&48	x		x	

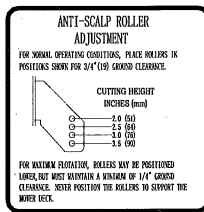
Safety/Operation and product Decals



331



333



334



335



336



337



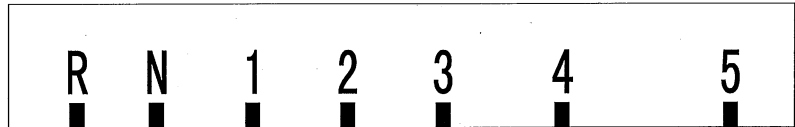
338



339



340



341

REF.	PART NO.	DESCRIPTION	48	48E	42	42E
331	8413	Decal, Danger	x	x	x	x
333	8309	Decal	x	x	x	x
334	8310	Decal	x	x	x	x
335	8045	Decal, Caution	x	x	x	x
336	8417	Decal	x	x	x	x

REF.	PART NO.	DESCRIPTION	48	48E	42	42E
337	8403	Decal, Danger	x	x	x	x
338	8408	Decal	x	x	x	x
339	8304	Decal	x	x	x	x
340	8404	Decal	x	x		
341	8401	Decal	x	x	x	x



Safety/Operation and product Decals



▲ WARNING
 FALLING HAZARD
 USE ONLY WORL DLAWN
 APPROVED RIDING ATTACHMENTS


342

WORL DLAWN POWER EQUIPMENT, INC.

MODEL	SERIAL
	P

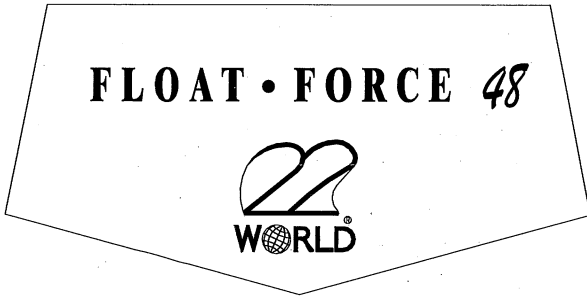
MADE IN CHINA

343

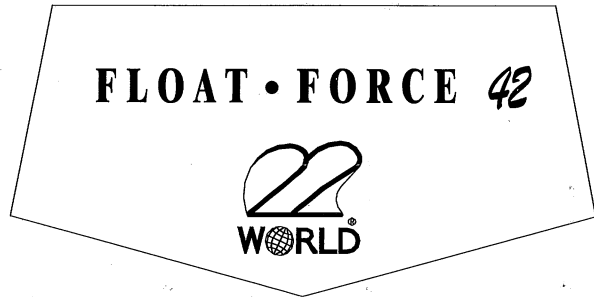


▲ CAUTION
 Avoid injury from burns.
 Shut off engine before
 removing fuel tank cap.

344



345




346



347


▲ WARNING



OBJECTS MAY BE
 THROWN FROM
 MOWER

- Before mowing,
 clear lawn of
 all debris.

▲ WARNING



MAXIMUM SAFE OPERATING
 ANGLE IS 15°


- Exceeding maximum safe operating angle
 may cause tipping or loss of footing.
- Do not mow on wet slopes.
- Mow across slopes, not up and down.

348

CUTTING HEIGHT
 INCHES (mm)


○	1.5 (38)
○	2.0 (51)
○	2.5 (64)
○	3.0 (76)
○	3.5 (90)
○	4.0 (102)
○	4.5 (114)

349



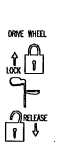
- Read and understand the operator's manual
 before using this machine.
- Do NOT operate unless trained to safely use
 this machine.
- Do NOT operate under the
 influence of alcohol or drugs.
- Do NOT operate without shields,
 guards, and safety devices in place and working.
- Stop engine and remove key before adjusting,
 servicing, or cleaning machine and attachments.

MOWER DECK
 PULL OUT TO ENGAGE



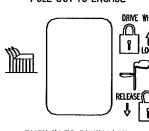
PUSH IN TO DISENGAGE

350



- Read and understand the operator's manual
 before using this machine.
- Do NOT operate unless trained to safely use
 this machine.
- Do NOT operate under the
 influence of alcohol or drugs.
- Do NOT operate without shields,
 guards, and safety devices in place and working.
- Stop engine and remove key before adjusting,
 servicing, or cleaning machine and attachments.

MOWER DECK
 PULL OUT TO ENGAGE



PUSH IN TO DISENGAGE

351

REF.	PART	DESCRIPTION	48	48E	42	42E
342	8410	Decal, Warning	x	x	x	x
343	8046	Decal, Model Plate	x	x	x	x
344	8402	Decal, Caution	x	x	x	x
345	8412	Decal	x	x		
346	8414	Decal			x	x

REF.	PART NO.	DESCRIPTION	48	48E	42	42E
347	8405	Decal			x	x
348	8411	Decal, Warning	x	x	x	x
349	8406	Decal, Height Adjusting	x	x	x	x
350	8409	Decal	x		x	
351	8418	Decal		x		x

7 43



WORLDLAWN®

Worldlawn Power Equipment, Inc.

422 Turnbull Canyon Road City of Industry CA 91744

phone: (626) 934-8552

fax: (626) 934-8162

E-mail: worldlawnmower@adelphia.net

Form No. 48102-200801