

Operator's Manual



WORLDLAWN® **Commercial / Residential** **28" Mower**

- *Service Information*
- *Mower Operation*
- *Adjustments & Repairs*
- *Warranty*



Worldlawn Power Equipment, Inc.

Industrial Park 2415 Ashland Ave. Beatrice, NE 68310

Toll Free Number: 1-800-267-4255



Service Information

WORLDLAWN 28" COMMERCIAL RESIDENTIAL MOWER

SERVICE AND REPAIR PARTS INFORMATION

If you have questions, problems, or need an Operator's or Parts Manual, please contact your local Worldlawn authorized dealer or call the Factory. When calling or writing, please provide the Model and Serial Number of your Mower.

WORLDLAWN POWER EQUIPMENT, INC.

Phone: (402)228-4255

Fax: (402)223-4103

E-mail: www.worldlawnpowerequip.com

Some of the pictures will vary between models but they generally depict similar information.

MODEL NUMBERS 28" MOWERS

MODEL	Cutting Height
WY28...	1.5"-3"
WY28B...	2"-4"

Factory specified replacement parts for your Mower are available from either your local Worldlawn authorized dealer or by calling the Factory.

For engine information, contact your nearest authorized Engine Service Dealer. The Engine Warranty is covered by the Engine Manufacturer's Limited Warranty.

Record

Model No. _____

Serial No. _____



Table of Contents

TABLE OF CONTENTS

SAFETY INFORMATION

Equipment Safety and Training	1
General Safety Instructions	1
Unpacking & Initial Assembly	1
Preparation to Mow	2
Operating the Mower	2
Maintenance and Storage	3

MOWER OPERATION

Initial Run Procedures	3
Mower Operation	3
Before Starting the Engine	3
Starting the Engine	3
Blade Drive	3
Wheel Drives	4
Stopping the Mower	4

ADJUSTMENTS AND REPAIRS

Mower Deck Adjustments	4
Mower Deck Belt Adjustments	4
Transmission Drive Belt Adjustments	4
Wheel Drive Belt Adjustments	5
Blade Replacement	5
2-4" Blade Drive Belt Replacement	5
1.5-3" Blade Drive Belt Replacement	5
Synchronous Belt Replacement	5
Transmission Drive Belt Replacement	5
Blade Brake Pad Replacement	6
Wheel Drive Belt Replacement	6
Rear Wheel Tube Replacement	6
Drive Control Adjustments	6
Shift Control Rod Adjustment	6
Transmission Case Replacement	7
Electrical Schematic	8
Service Instructions for Transmission	9

ACCESSORY

Grass Catcher	10
---------------------	----

SERVICE BATTERY

Service Battery	10
Connecting the Negative Battery Cables	10
Check Battery Charge	11

LIMITED WARRANTY

Warranty Information	12
----------------------------	----



RULES FOR SAFE OPERATION

**LOOK FOR THIS SYMBOL TO POINT OUT IMPORTANT
SAFETY PRECAUTIONS. IT MEANS ATTENTION!
BECOME ALERT! YOUR SAFETY IS INVOLVED.**

EQUIPMENT SAFETY AND TRAINING

- **READ THE OPERATOR'S** Manual Carefully. Be thoroughly familiar with the controls and the proper use of the Mower.
- **NEVER** allow children to operate or ride on the Mower. Do not allow adults to operate the Mower without proper instruction.
- **KEEP** the area of operation clear of all bystanders, particularly small children and pets.
- **DO NOT** operate the Mower if under the influence of alcohol, medication, or when tired or ill.

Your mower was built to the highest standards in the industry; however, the prolonged life and maximum efficiency of your mower depends on you following the operating, maintenance, and adjustment instructions in this manual.

We encourage you to contact your dealer for repairs. Worldlawn dealers are informed of the latest methods to service this mower and provide prompt and efficient service.

A replacement operator's manual is available from your dealer or by contacting Worldlawn Power Equipment, Inc. Industrial Park 2415 Ashland Avenue Beatrice, NE 68310.

E-mail: www.worldlawnpowerequip.com. Please indicate the complete model and serial number of your Worldlawn mower.

Use of other than original Worldlawn replacement parts will void the warranty.

The "Right" and "Left", "Front" and "Rear" of the machine are referenced from the operator's perspective when in the normal operating position and facing the forward travel direction.

GENERAL SAFETY INSTRUCTIONS

Read this operator's manual and instructions furnished with attachments. Perform only those maintenance procedures described in this manual. If major repairs are ever needed or assistance is desired, contact an authorized Worldlawn dealer. To ensure optimum performance and safety, always purchase genuine Worldlawn replacement parts and accessories.

FAILURE TO FOLLOW THESE INSTRUCTIONS OR INCORRECTLY OPERATING THE MOWER, COULD RESULT IN SERIOUS PERSONAL INJURY.



This symbol means **"Attention! Become Alert!"**



DANGER

The signal word **"DANGER"** denotes that an extremely hazardous situation exists on or near the machine that could result in high probability of death or irreparable injury if proper precautions are not taken.



WARNING

The signal word **"WARNING"** denotes that a hazard exists on or near the machine that can result in injury or death if precautions are not taken.



CAUTION

The signal word **"CAUTION"** is a reminder of safety practices on or near the machine that could result in personal injury if proper precautions are not taken.

UNPACKING & INITIAL ASSEMBLY

Open crate.

Remove loose parts (i.e., Operator's manual, etc) from crate.

Remove unit from crate, check crate thoroughly for loose parts.

Attach the handlebars with two M8x50 Hex Hd bolts, two M8x25 bolts, four M8 locknuts, and four M8 washers on each side as shown in FIG 1.

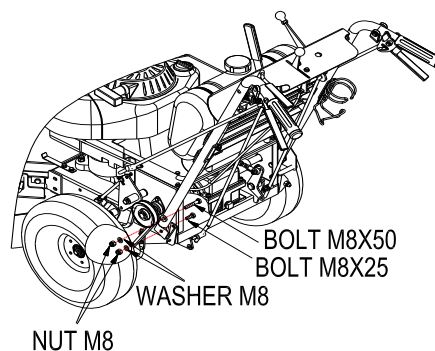


FIG 1

Each of the control rods must be connected as shown in FIG 2. Follow the instructions to properly adjust each of the controls.

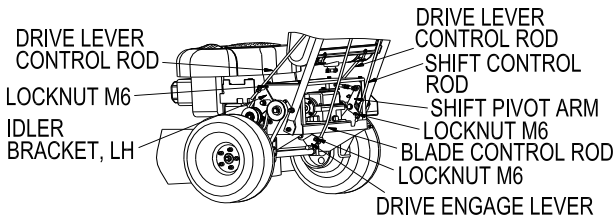


FIG 2

Route the throttle control cable through the rear shield and attach to the engine as shown in FIG 3 and in the engine operator's manual.

Install the discharge chute as shown in FIG 4.

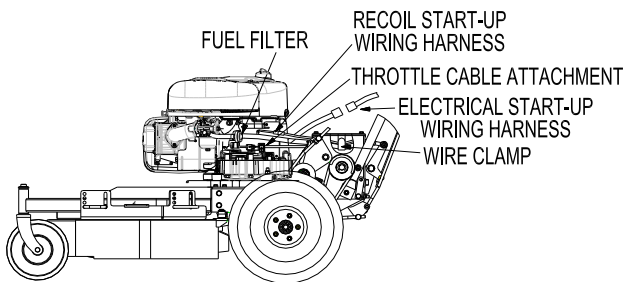


FIG 3

SAFETY OPERATION PREPARATION TO MOW

- Remove all debris or other objects that might be picked up and thrown by the blades. Keep all bystanders away from the mowing area.
- **DO NOT** operate the Mower when barefoot or wearing open sandals. Always wear appropriate footwear.
- **CHECK** the fuel before starting the engine. Do not fill the gasoline tank indoors or when the engine is running. Wait until the engine has been allowed to cool for several minutes before filling with gasoline. Clean up any spilled gasoline before starting the engine.
- **KEEP** the Blade Drive Lever in the disengaged position and shift the Transmission into neutral before starting the engine. Never make a height adjustment or any other Mower adjustment while the engine is running.
- **NEVER** operate the Mower in wet grass. Always be sure of your footing; keep a firm hold on the handles and walk; never run.
- Do not smoke while handling gasoline.
- Fill the tank outdoors and up to approximately 1" (25 mm) below the bottom of the filler neck.
- Keep all shields, safety devices, and decals in place. If a shield, safety device, or decal is defective or damaged, repair or replace it before operating. ALSO, CHECK ALL NUTS, BOLTS, AND SCREWS FOR PROPER TIGHTNESS, TO ASSURE THE MOWER IS IN SAFE OPERATING CONDITION.

- Know the controls and how to stop quickly.
 - Do not allow children under fourteen years old to operate the mower.
- Do not allow adults to operate the mower without proper instruction.
- The owner/user can prevent and is responsible for accidents or injuries occurring to themselves, other people, or property.

OPERATING THE MOWER

- **ALWAYS** wear safety goggles or safety glasses with side shields when operating the Mower.
- **DO NOT** change the Engine Governor setting or overspend the engine.
- **DO NOT** put hands or feet near or under rotating parts. Keep clear of the discharge opening at all times.
- Disengage the blades and wait for them to stop before crossing gravel drives, walks, or roads.
- **MOW** only in daylight or in good artificial light. Always run the Engine at the fast speed setting for best mowing performance.
- If the cutting blades should strike a solid object or the equipment should start to vibrate abnormally, stop the engine, disconnect the spark plug wire, and check immediately for the cause. Vibration is generally a warning of trouble. Check the mower for damaged or defective parts. Repair any damage before starting the engine or operating the mower deck. Be sure the blades are in good condition and the blade bolts are tight.
- **STOP** the Engine whenever you leave the Mower or during cleaning, repairing, or inspecting. Make certain the Blades and all moving parts have stopped. Disconnect the spark plug wire and keep the wire away from the plug to prevent accidental starting.
- **MOW** across the face of slopes; never up and down. Exercise extreme caution when changing direction on slopes. Do not mow on slopes (with an incline of more than 15°). Exceeding the maximum safe operating angle may cause tipping and loss of Mower control.
- The discharge chute must always be installed and in the down position except when the optional grass catcher or mulching shield is properly installed. If the discharge area should plug, shut the engine off and wait for all movement to stop before removing the obstruction.
- Do not touch the engine or muffler while the engine is running or a short time after it has stopped. These areas could be hot enough to cause a burn.
- The engine should be started with the neutral latches in the neutral lock position, the blades disengaged, the transmission in neutral, and the operator's presence levers released.
- Do not run the engine in a confined area without adequate ventilation. Exhaust fumes are hazardous and could possibly be deadly.
- Using the mower demands attention. To prevent loss of control:
 - A. Watch for holes or other hidden hazards.
 - B. Do not drive close to a drop-off, ditch, creek bank, or other hazard.

C. Reduce speed when making sharp turns and when turning on hillsides.

- Do not operate the mower under the influence of alcohol or drugs.
- Before leaving the operator position or leaving the mower unattended, shift the transmission into neutral, place the neutral latches in the neutral lock position, and release the Blade Drive Lever. Shut the engine off.
- Shut the engine off and wait until the blades come to a complete stop before removing the grass catcher.
- Never raise the mower deck while the blades are rotating.
- Always park the mower and/or start the engine on a level surface.
- Do not pass or stand on the grass discharge side of any mower while the engine is running. Stop operation when another person approaches.

FIG 4.

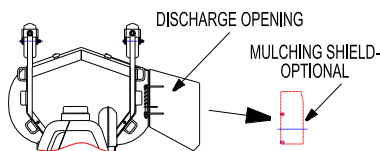


FIG 4

MAINTENANCE AND STORAGE

Allow only trained personnel to service the mower.

- Disconnect the spark plug wire from the spark plug to prevent accidental starting of the engine when servicing, adjusting, or storing the mower.
- If the mower must be tipped to perform maintenance or adjustment, remove the battery and drain the gasoline from the fuel tank.
- To reduce potential fire hazard, keep the engine free of excessive grease, grass, leaves, and accumulations of dirt.
- Be sure the mower is in safe operating condition by keeping nuts, bolts, and screws tight. Check the blade bolts and nuts frequently to be sure they are tight.
- If the engine must be running to perform a maintenance adjustment, keep hands, feet, clothing, and other parts of the body away from the blades and other moving parts.
- Do not overspend the engine by changing governor settings. To be sure of safety and accuracy, have an authorized dealer check maximum engine speed with a tachometer.
- The engine must be shut off before checking the oil or adding oil to the crankcase.
- Allow the engine to cool before storing the mower in any enclosure such as a garage or storage shed.
- Always store gasoline in a safety-approved, red container.
- Caution must be taken while maintenance is being done to battery. Battery contains corrosive acid which can burn your skin and clothing.
- Keep battery away from fires. Short circuit of battery can cause explosion.

- Drain and refill the transmission oil yearly- use one pint of SAE30.
- Grease Fittings are provided on important parts requiring lubrication.

MOWER OPERATION

CAREFULLY READ AND UNDERSTAND ALL SAFETY INSTRUCTIONS BEFORE ATTEMPTING TO OPERATE THE MOWER.

INITIAL RUN PROCEDURES

Check the belts for proper tension at 2, 4, and 8 hours.

Check the steering control rods for neutral adjustment .

Check the tires for proper pressure.

Drive wheels: 30 PSI (210kPa)

Check for loose hardware. Tighten as needed.

Check the safety switches for proper adjustment:

- ⚠ **The engine will crank, but not start, if the mower is not in neutral.**
- ⚠ **The engine will crank, but not start, if the blade drive lever is engaged.**
- ⚠ **The engine should start if the transmission is in neutral and the blade drive lever is disengaged.**

Check to make sure that all the fittings have been lubricated.

MOWER OPERATION

READ AND UNDERSTAND THE SAFETY INSTRUCTIONS BEFORE ATTEMPTING TO OPERATE THE MOWER

BEFORE STARTING THE ENGINE

- ⚠ **Check oil level in the engine.**
- ⚠ **Fill the fuel tank with clean, lead-free, gasoline.**
- ⚠ **Open the fuel line shut-off on the bottom of the fuel tank.**
- ⚠ **NOTE:**
 - The transmission must be in neutral.**
 - The blade drive lever must be disengaged.**
 - Operator presence levers must be released.**
 - Steering levers must be in the neutral lock position.**

START THE ENGINE

When starting a cold engine, move the throttle control to choke position.

When restarting a warm engine, move the throttle control to the mid-way position.

BLADE DRIVE

Squeeze and hold the operator presence levers (engaged). Push the mower blade drive lever forward to engaged position. The blades will rotate at high speed. Pull the mower blade drive lever backward to disengaged position to stop the blades. FIG 5.

THE BLADE TIP SPEED ON 28" IS 14,240 FEET PER MINUTE

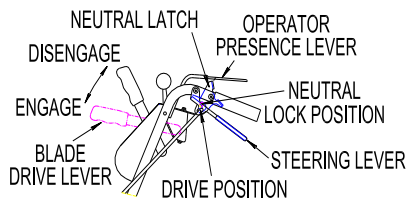


FIG 5



NOTE:

When the blade drive lever is engaged or disengaged, a squealing sound from the underside of the mower deck is normal. It is caused by the blade rotating speed suddenly changing. Slowly push the mower blade drive lever forward to engaged position. For best mower life, engage the blade drive lever with the engine at 3/4 throttle.

WHEEL DRIVES

SQUEEZE THE STEERING LEVERS WITH BOTH HANDS TO KEEP THE NEUTRAL LATCHES IN THE NEUTRAL LOCK POSITION; MOVE GEAR SHIFT LEVER TO 1, 2, OR 3 POSITION.



NOTE:

Top speed is only used for transportation.

While squeezing the steering levers with both hands, release right and left neutral latches; release right and left steering lever to make the mower travel.

When the steering levers are released, the mower will travel straight. To make a right turn, squeeze the RH steering lever. To turn left, squeeze the LH steering lever.

STOPPING THE MOWER

To stop, squeeze both the steering levers, lock the neutral latches, and shift the transmission into neutral.



NOTE:

Push the gear shift lever forward to increase speed.

The mower must be at full stop before decreasing speed.

ADJUSTMENTS AND REPAIRS

MOWER DECK ADJUSTMENTS

Due to the many cutting conditions that exist, it is necessary to adjust the cutting height. The cutting height can be adjusted from 1.5" to 3" (WY28B: from 2" to 4") in 0.5" increments by changing the height of the mower deck.

To adjust the mower deck height, hold handle and pull J-pins on side of

deck; align holes and release pins in desired register mark. Repeat on opposite side. Ensure the readings of all four register marks are the same. FIG 6.



WARNING:

Be sure engine is off and blade is fully stopped to adjust the cutting height. Failure to follow these instructions could result in personal injury or mower damage.

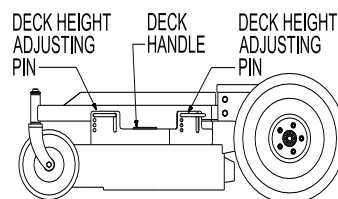


FIG 6

MOWER DECK BELT ADJUSTMENTS

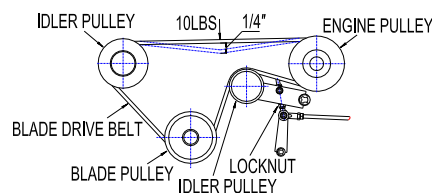


FIG 7

Remove the belt cover.

Adjust the mower deck belt using a belt tension gauge. Engage the blade drive lever. Adjust the tension by tightening or loosening the locknut. The belt should move 1/4" with 10 pounds of pressure. FIG 7



NOTE:

Due to initial belt stretch and to prevent the belt from slipping, check this adjustment after the first 2 hours, 4 hours, and 8 hours of operation.



WARNING:

Be sure engine is off before removing belt cover.

TRANSMISSION DRIVE BELT

The transmission drive belt is on the underside of the engine frame weldment. Adjust the belt so that the belt moves 1/4" with 10 pounds of pressure. Adjust the tension by moving transmission drive idler pulley. FIG 8.

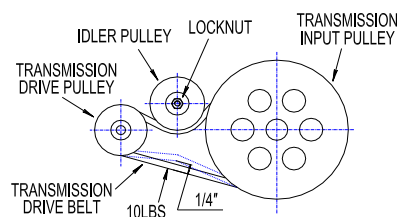


FIG 8



WARNING:

Shut off engine and disconnect the spark plug wire before adjusting the belt.

WHEEL DRIVE BELT ADJUSTMENTS

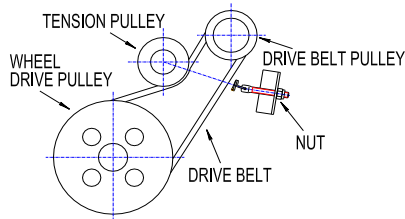


FIG 9

Adjust the wheel drive belts on either side of the mower when the mower pulls to one side or the other. If it pulls to the left, add tension to the belt on the right side of the mower. If it pulls to the right, adjust the belt on the left side of the mower. FIG 9

BLADE REPLACEMENT

Remove belt cover. Remove blade bolts, washers, and locknuts. Replace all parts in proper order. Be sure blade coupling above the blade and the flats in blade are aligned with flats on the blade spindle. Torque to 66 ± 13 ft-lb (90 ± 18 N-M). Be sure that both blades are positioned equally and perpendicular to each other. FIG 10, FIG 11

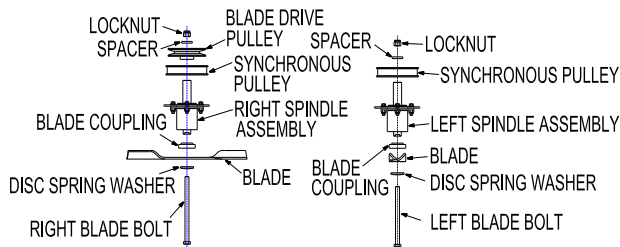
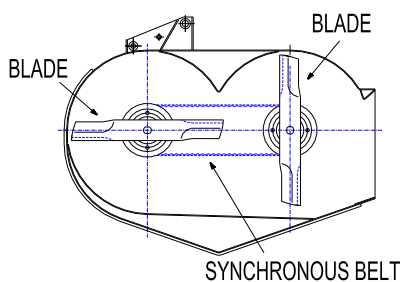


FIG 10



WY28 & WY28B

FIG 11



WARNING:

Be sure engine is off before removing belt cover and replacing blades.

2-4" BLADE DRIVE BELT REPLACEMENT

Remove the belt cover. Loosen locknuts of the blade pulley belt guard bracket on the mower deck and rotate the belt guard bracket outward at an angle. Loosen locknuts of the belt guard on the belt guard fixed seat on the mower deck. Loosen nuts of the belt guard brackets on the idler pulleys and remove the belt guards from holes. Loosen bolts of the LH belt guard bracket beside engine pulley on the engine frame and nuts of the long bolt on the RH belt guard bracket. Rotate the guards upward at an angle and install new belt. Reinstall guards and guard brackets. Keep the blade drive lever in the engage position and tighten the belt. Give a $1/8"$ (3mm) clearance between the guards and pulleys. Tighten all the nuts and bolts. Check the belt for proper tension. Reinstall the belt cover. FIG 12

1.5-3" BLADE DRIVE BELT REPLACEMENT

Remove the belt cover. Loosen locknuts of the blade pulley belt guard bracket on the mower deck and rotate the belt guard bracket outward at an angle. Loosen locknuts of the belt guard on the belt guard fixed seat on the mower deck. Loosen bolts of the LH belt guard bracket beside engine pulley on the engine frame and nuts of the long bolt on the RH belt guard bracket. Rotate the guards upward at an angle and install new belt. Reinstall guards and guard brackets. Keep the blade drive lever in the engage position and tighten the belt. Give a $1/8"$ (3mm) clearance between the guards and pulleys. Tighten all the nuts and bolts. Check the belt for proper tension. Reinstall the belt cover. FIG 12-1



NOTE:

All locknuts on belt guards (and brackets) must be securely tightened.

SYNCHRONOUS BELT REPLACEMENT

Remove the belt cover. Remove blade drive belt from the blade pulley. Remove linking plate. Remove locknut and spacer from the RH blade bolt, and remove synchronous belt and synchronous pulley. Replace all parts in proper order. FIG 12

Replace synchronous belt every 200 hours.



WARNING:

Be sure that both blades are perpendicular to each other while installing. It could otherwise result in serious mower damage. FIG 11

TRANSMISSION DRIVE BELT REPLACEMENT

Loosen the bolts of the LH belt guard bracket by the engine pulley and nuts of the long bolt on the RH belt guard bracket. Rotate the belt guard brackets on both sides at an angle. Remove the blade drive belt from the engine pulley. Loosen the locknut of transmission drive idler pulley and

move the transmission drive idler pulley. Remove the old belt and install new belt. Replace all parts in proper order. Adjust the belt following proper procedure. Tighten all the locknuts. FIG 12.

NOTE:

All locknuts on belt guards must be securely tightened.

BLADE BRAKE PAD REPLACEMENT

Remove belt cover. Move blade brake arm assembly out of the way and remove hardware securing blade brake pad. Install new pad, center the pad in the blade pulley groove, and re-tighten nuts. Test operation of the blade brake system to see that the blade brake stops blade rotation within 3 seconds. FIG 12

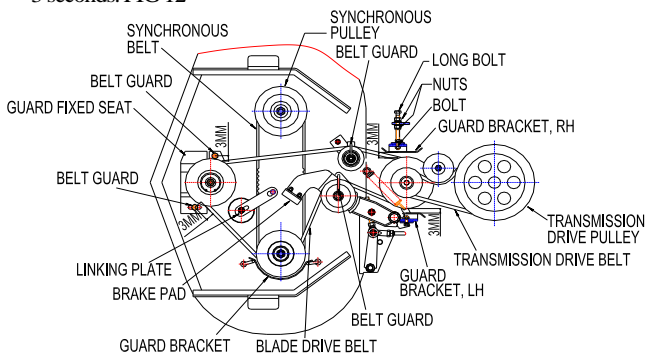


FIG 12

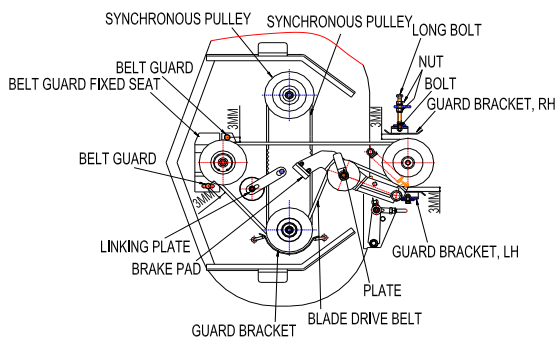


FIG 12-1

NOTE:

Shut off engine and disconnect the spark plug wire before removing belt cover.

WHEEL DRIVE BELT REPLACEMENT

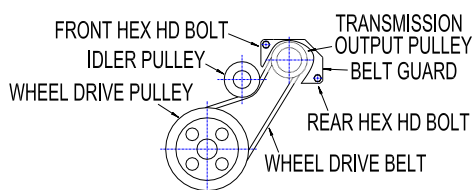


FIG 13

Remove rear Hex Hd Bolt securing Belt Guard and loosen front Hex Hd Bolt securing Belt Guard. Pivot guard on Front Hex Hd Bolt. Squeeze Steering Lever to loosen Idler Pulley and remove the wheel drive belt from Transmission Output Pulley. Remove the belt from the wheel drive pulley on drive wheel. Install new belt and replace all parts in proper order. Adjust the belt following belt adjustment procedures. FIG 13

REAR WHEEL TUBE REPLACEMENTS

To replace tube, remove tire and rim assembly from the wheel hub weldment. Remove bolts from tire and rim assembly, split the rim, remove old tube, and install new tube. Reinstall drive wheel assembly in proper order.

DRIVE CONTROL ADJUSTMENTS

The drive control is a system of interconnected linkages which have steering and braking functions. One steering lever function is neutral latch lock position or neutral latch unlock position. When steering levers are in neutral lock position, the power is disengaged. To brake, squeeze both brake levers and operator presence control rod on the mower.

Adjusting control rod: Remove hair pin on the top of control rod, pull out the control rod from steering lever, turn the control rod so that the length of two control rods is same, and reinstall all parts in proper order.

Adjusting brake lever: Loosen or tighten locknut at the bottom of brake lever to adjust the length of the brake lever. See FIG 14

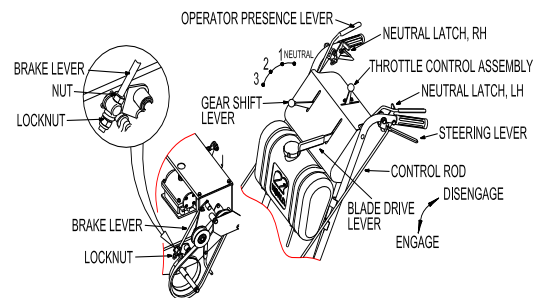


FIG 14

SHIFT CONTROL ROD ADJUSTMENTS

Move Shift Control Rod into neutral position. Handle should compress pressure switch button down 5mm, otherwise rod length should be adjusted. To change rod length, remove cotter pin from upper Shift Control Rod Assembly. Remove rod from lever bracket hole. Rotate rod until desired length is achieved to cause switch to compress correctly. Reinstall rod into lever bracket hole and add cotter pin. FIG 15

TRANSMISSION CASE REPLACEMENT

When replacing transmission case, remove the M6x16 bolts which link left and right connecting pads to output axis; then loosen inner shaft hex bolts. Remove lower hex bolts (3300106), which link transmission case and console frame. Remove bolt which connects shift arm weldment on top of transmission case to shift rod arm assembly. Remove the bolt (3300198) of transmission input pulley. Remove pulley and then remove the belt. Install new transmission case back into position. Reinstall bolts of left and right connecting pads of transmission case to drive output axis; leave bolts loose. Install and tighten bolts (3300106) which link transmission case and console frame. Install and tighten shift arm weldment bolt. Reinstall transmission belt and pulley and tighten pulley bolt (3300198).

Finally, tighten left and right connecting pad M6x16 bolts and inner shaft hex bolts. FIG 17

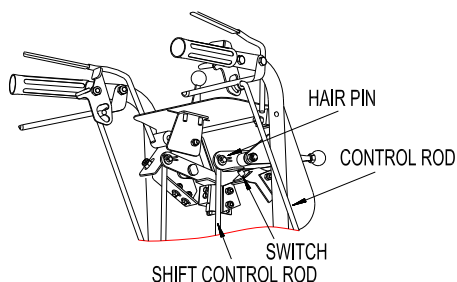
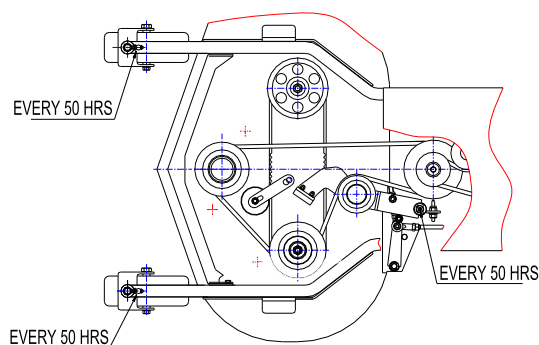


FIG 15



LUBRICATION SCHEDULE

FIG 16

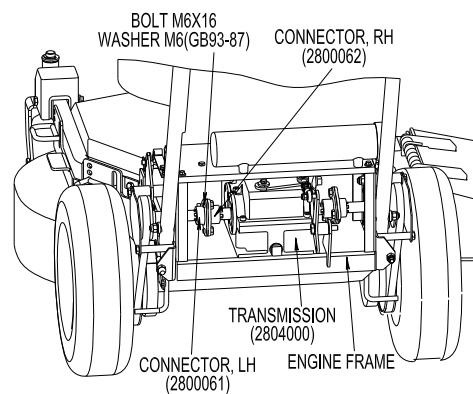


FIG 17



SERVICE INSTRUCTIONS FOR TRANSMISSION

Service Interval

First-time service: 80 hours

Service time thereafter: every 300 hours

Service Method

Remove drain plug from the back of transmission and drain lubricant oil into a container, see FIG 18.

Caution: Make sure to completely drain all the lubricating oil from transmission.

Replace drain plug and tighten.

Remove the fill plug.

Pour 0.50 pt(0.25L) #18 hyperbolic gear oil into the transmission, see FIG 18.

Replace fill plug into the transmission and tighten. Clean the surface of transmission, see FIG 18.

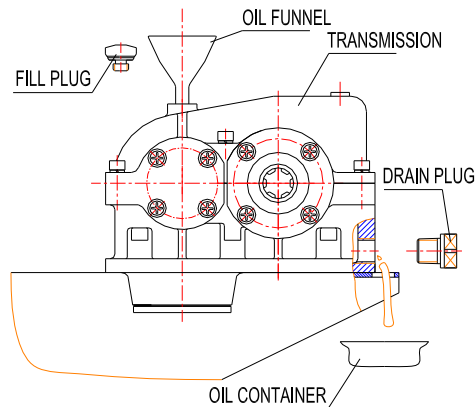


FIG 18

GRASS CATCHER & COUNTER-WEIGHT

Grass catcher: FIG 19

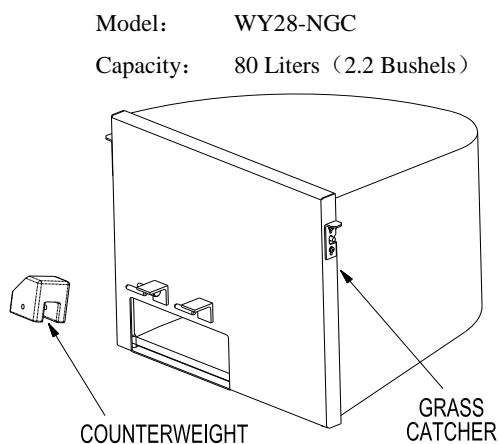


FIG 19

SERVICE BATTERY

⚠ WARNING

Battery posts, terminals, and related accessories contain lead compounds, chemicals known to cause cancer and reproductive harm.

The machine is shipped with a filled lead acid battery without protection.

Unhook seat latch and tilt seat to gain access to the battery.

⚠ DANGER

POTENTIAL HAZARD

Charging the battery may produce explosive gasses.

WHAT CAN HAPPEN

Battery gasses can explode causing serious injury.

HOW TO AVOID THE HAZARD

Keep sparks, flames, and cigarettes away from battery.

Ventilate when charging or using battery in an enclosed space.

Check the voltage of the battery with a digital voltmeter.

Locate the voltage of the battery in the table below and charge the battery for the recommended time interval to bring the charge up to a full charge of 12.6Volts or greater.

IMPORTANT: Make sure the negative & positive battery cables are connected correctly and the battery charger used for charging the battery has an output of 16 volts and 7 amps or less to avoid damaging the battery.

Chart 1

Voltage Reading	Percent Charge	Maximum Charger Settings	Charging Interval
12.6 or greater	100%	16Volts/7 amps	No charging Required
12.4-12.6	75%-100%	16Volts/7 amps	30 Minutes
12.2-12.4	50%-75%	16Volts/7 amps	1 Hour
12.0-12.2	25%-50%	14.4Volts/4 amps	2 Hours
11.7-12.0	0-25%	14.4Volts/4 amps	3 Hours
11.7 or less	0%	14.4Volts/4 amps	6 Hours or more

⚠ CAUTION

POTENTIAL HAZARD

If the ignition is in the “ON” position, there is potential for sparks and engagement of components.

WHAT CAN HAPPEN

Sparks could cause an explosion or moving parts could accidentally engage causing personal injury.

HOW TO AVOID THE HAZARD

· Be sure ignition switch is in the “OFF” position before charging the battery.

CONNECTING THE NEGATIVE BATTERY CABLES:

Note: If the positive cable is also disconnected, connect the positive (red) cable to the positive battery terminal first, then the negative (black) cable to the negative battery terminal. Slip insulator boot over the positive terminal.

Note: If time does not permit charging the battery, or if charging equipment is not available, connect the negative battery cables and run the vehicle continuously for 20 to 30 minutes to sufficiently charge the battery.

⚠ CAUTION

Battery contains sulfuric acid. Avoid contact and always shield eyes, face, skin, and clothing from battery. Cigarettes, flames, or sparks could cause battery to explode.

Do not charge, use booster cables, or adjust post connection without proper training.

If battery acid comes in contact with skin or eyes, flush with water and call a physician immediately.

·Keep out of reach of children.

CHECK BATTERY CHARGE

Service Interval: Monthly

Allowing batteries to stand for an extended period without recharging them will result in reduced performance and service life. To preserve optimum battery performance and life, recharge them in storage when the open circuit voltage drops to 12 Volts.

Note: To prevent damage due to freezing, battery should be fully charged before putting away for winter storage.

a) Check the voltage of the battery with a digital voltmeter. Locate the voltage reading of the battery in the table (See chart 1) and charge the battery for the recommended time interval to bring the charge up to a full charge of 12.6 Volts or greater.

IMPORTANT: Make sure the negative & positive battery cables are connected correctly and the battery charger used for charging the battery has an output of 16 volts and 7 amps or less to avoid damaging the battery.



LIMITED WARRANTY
WORLDLAWN POWER EQUIPMENT, INC

28" MOWER

Worldlawn Power Equipment, Inc, ("Worldlawn") warrants that the Worldlawn 28" Mower ("Mower") will be free from defects in material and workmanship for a period of one year commercial from the original date of purchase. During the warranty period, Worldlawn will repair or replace, at its discretion, any Mower or part thereof which is found to be defective in material or workmanship. This warranty specifically excludes wear items, including but not limited to belts, blades, and tires. This warranty also specifically excludes parts covered by another manufacturer's warranty, which parts are covered only by that manufacturer's warranty.

This limited warranty extends only to the original retail purchaser ("Owner") of a Mower. It is not transferable. This warranty extends only to those Mowers purchased for private residential and commercial use .

Proof of purchase will be required to substantiate all warranty claims. All warranty work must be performed by an authorized Worldlawn Dealer. Any work done on or to the Mower by anyone other than an authorized Worldlawn Dealer, including the original purchaser, voids all provisions of this warranty except those provisions which limit Worldlawn's liability (as set forth below).

Any Mower or part thereof which, at Worldlawn's sole discretion, is deemed defective shall be repaired or replaced , at Worldlawn's discretion, without charge for parts or labor. To take advantage of this warranty, the Mower must be returned to an authorized Worldlawn Dealer within the warranty period. The cost of delivering the Mower to the authorized Dealer and return delivery shall be the responsibility of the Owner.

Worldlawn's sole responsibility with any claim made under this warranty is limited only to repairing or replacing the mower or a defective part thereof, and no claim of breach of warranty shall be cause for rescission, cancellation, or voiding the contract of sale of the Mower.

This warranty does not extend to any Mower or part thereof which has been misused, neglected, damaged, abused, not properly installed or maintained, altered, or which has been operated in any way contrary to the operating instructions as specified in the Owner/Operators Manual. This warranty does not extend to any repair or replacement made necessary by normal use . This warranty does not extend to the engine which is warranted separately by the engine manufacturer.

THE WARRANTY EXPRESSED HEREIN IS IN LIEU OF OTHER WARRANTIES, EXPRESSED OR IMPLIED, INCLUDING, WITHOUT LIMITATION, ANY IMPLIED WARRANTY OR MERCHANTABILITY OR FITNESS FOR A PARTICULAR USE AND IS IN LIEU OF ANY AND ALL OTHER OBLIGATIONS OR LIABILITY ON WORLDLAWN'S PART.

UNDER ANY AND ALL CIRCUMSTANCES, WORLDLAWN'S TOTAL LIABILITY TO OWNER FOR ANY AND ALL CLAIMS, LOSSES, OR DAMAGES, INCLUDING LOSS OF PROFITS, ARISING OUT OF ANY CAUSE WHATSOEVER, WHETHER BASED IN CONTRACT, NEGLIGENCE, OR OTHER TORT, STRICT LIABILITY, BREACH OF WARRANTY OR OTHERWISE, SHALL IN NO EVENT EXCEED THE PURCHASE PRICE OF THE MOWER . IN NO EVENT SHALL WORLDLAWN BE RESPONSIBLE FOR SPECIAL, INCIDENTAL, CONSEQUENTIAL, OR EXEMPLARY DAMAGES.

Notes:



Notes:



WORLDLAWN®

Worldlawn Power Equipment, Inc.

Industrial Park 2415 Ashland Ave. Beatrice, NE 68310

Phone: (402) 228-4255

Fax: (402) 223-4103

www.worldlawnpowerequip.com